

Need a Mortgage in principle
to make offers? Call us now
for quick assistance!
0121 775 0101



Do you need to sell?
Start your journey now!
Call us we can help.
01564 777 314



SCAN FOR MORE INFO
SIZE - 1500 Sq Ft
TENURE - Freehold
COUNCIL TAX - Solihull Metropolitan Borough Council - E.
BROADBAND - Upload Max 1000Mbps
Download Max 1800Mbps
MOBILE - EE O2
EPC - TBC
PARKING - For up to 4 Vehicles
FLOODRISK - Very Low
SERVICES - Mains
COVENANTS - N/A

Are you an investor
interested in expanding your
portfolio?

**Call 01564 777 314 to provide your
investment criteria for alerts.**

MILL LANE

Bentley Heath, B93

Situated in Bentley Heath, this semi-detached house on Mill Lane presents a fabulous opportunity for families seeking a spacious and versatile home. The property has been thoughtfully extended, offering generous accommodation that is both practical and inviting.

FEATURES

- Substantial Family Home
- Tastefully Presented Throughout
- Dual Aspect Lounge/Dining Room
- Breakfast Kitchen
- Ground Floor Shower Room, Utility & Study/Play Room
- Principal Bedroom with Fitted wardrobes & En-Suite
- Three Further Excellent Sized Double Bedrooms
- Family Bathroom
- Private Rear Garden with Fabulous Home Office/Teenage Room
- Driveway Parking for Up to Four Vehicles
- Convenient Location



Sneak Peeks

Every week, we unveil "Sneak Peeks," a feature showcasing exclusive properties before they hit Rightmove and other platforms.

The Landlord Club

Join our Landlord Club for weekly updates on legislation, market trends, and our Letting Director's 'Investment Pick of the Week' for optimal ROI.

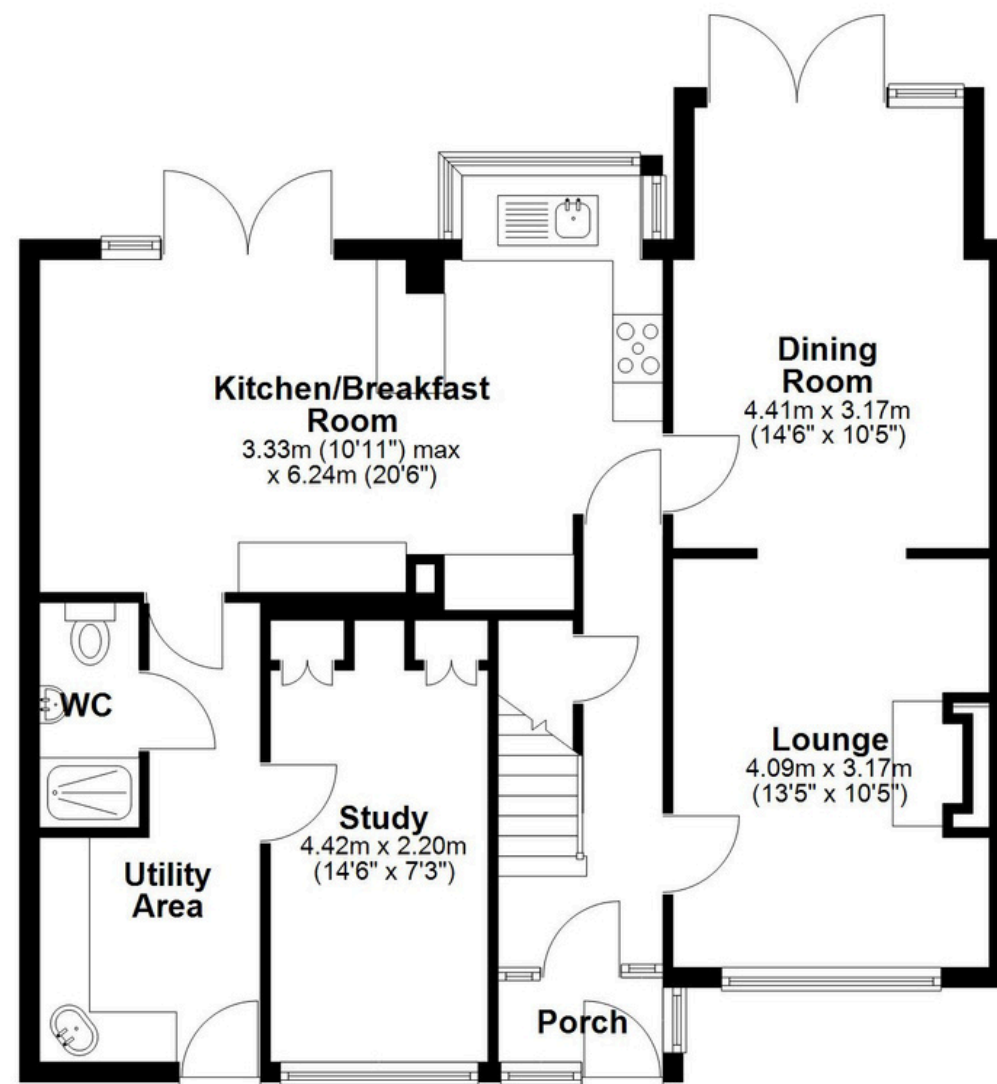
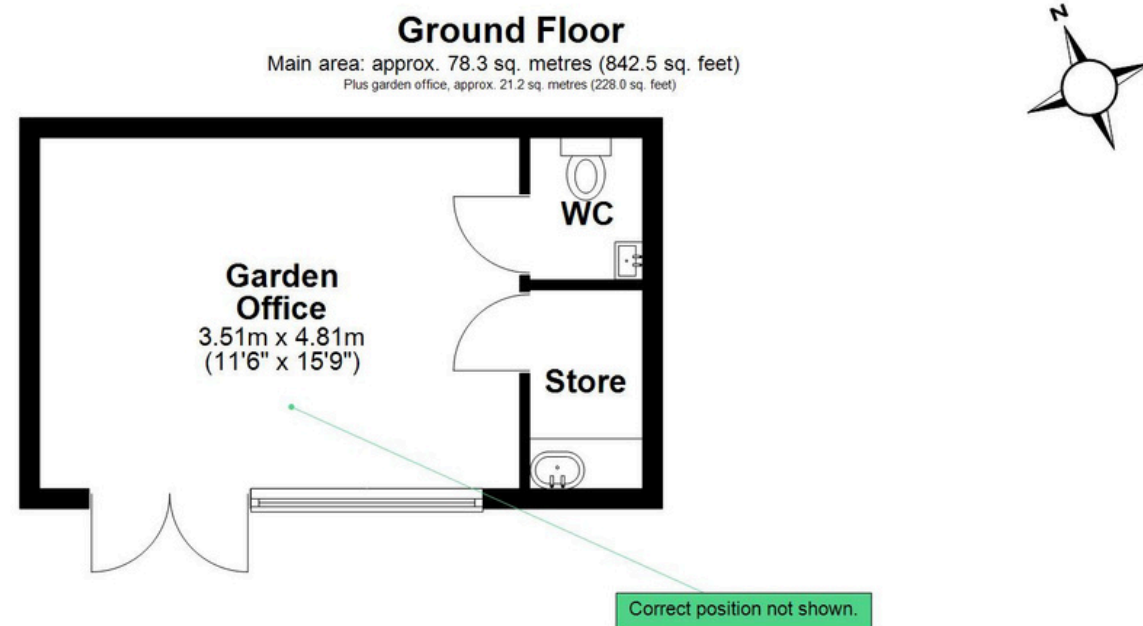
HTSPMD

Tune into 'How's The Solihull Property Market Dom' weekly for a quick, insightful snapshot of the market.

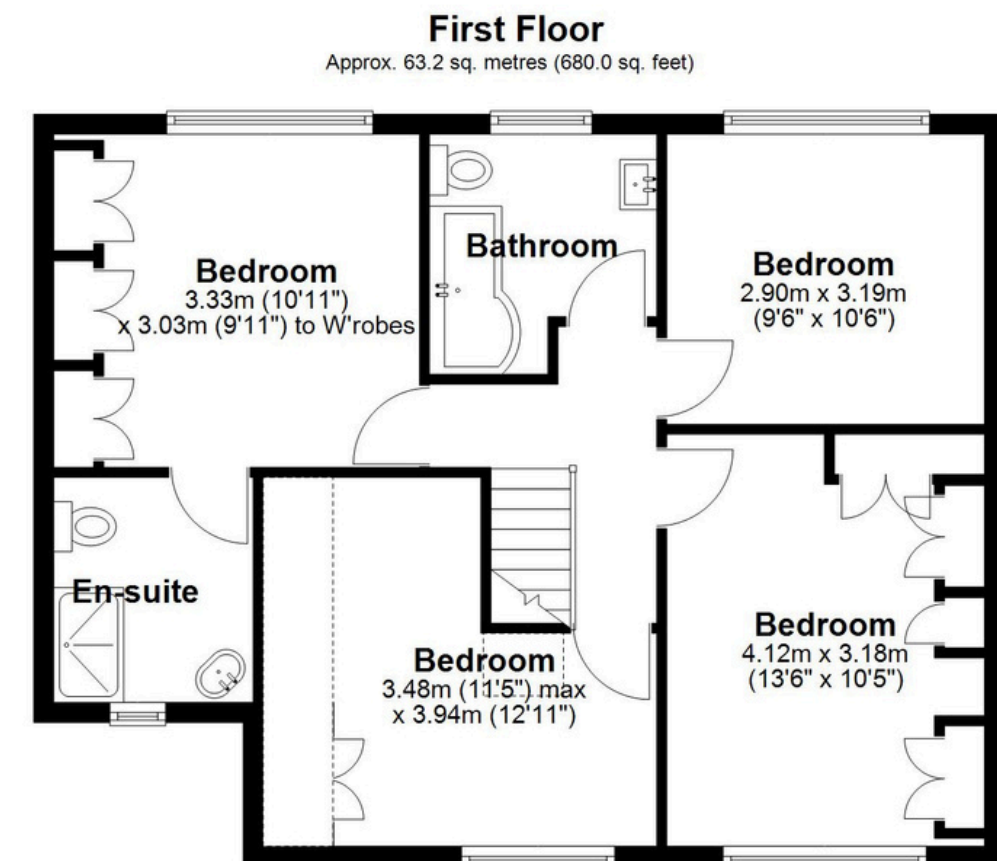
The Mortgage Update

Get weekly insights and the best deals with our Mortgage Update, your shortcut to navigating the complex mortgage landscape confidently.

SCAN TO **VIEW OUR
WEEKLY FILMS &
SUBSCRIBE**



Main area: Approx. 141.5 sq. metres (1522.6 sq. feet)
Plus garden office, approx. 21.2 sq. metres (228.0 sq. feet)



This floor plan is for illustration purposes only, this is not intended to be a measured/scaled survey or comply with RICS guidelines. All measurements (including total floor area) openings, orientation and floor area are approximate. No details are guaranteed, they cannot be relied upon for any purpose and do not form part of any agreement. A party must rely upon its own inspection(s). No responsibility is taken for any error, omission, or mis-statement.
Plan produced using PlanUp.