

Need a Mortgage in principle
to make offers? Call us now
for quick assistance!
0121 775 0101

DM&Co.
SALES & LETTINGS



Do you need to sell?
Start your journey now!
Call us we can help.
01564 777 314



SCAN FOR MORE INFO
SIZE - 912 Sq Ft
TENURE - Leasehold with Share of Freehold
COUNCIL TAX - Solihull Metropolitan Borough Council - D
BROADBAND - Upload Max 220Mbps
Download Max 1800Mbps
EPC - B - 83
PARKING - For at least 2 Cars
FLOODRISK - Very Low
SERVICES - Mains
COVENANTS - N/A

WEBB GROVE
Hockley Heath, B94

This beautifully presented semi-detached house offers a wonderful opportunity for both first-time buyers and those looking to downsize. Available for sale at £425,000 for 100% ownership or £212,500 for a 50% shared ownership, this property is an excellent entry point onto the property ladder.

FEATURES

- Available at 50% Shared Ownership
- Tastefully Presented Throughout
- Lounge with Cupboard & Guest Cloakroom
- Modern Kitchen/Dining Room
- Principal Bedroom with Built in Cupboard
- Two Further Good Sized Bedrooms
- Contemporary Bathroom
- Private South Facing Rear Garden
- Two Allocated Parking Spaces
- Village Location

Are you an investor
interested in expanding your
portfolio?

Call 01564 777 314 to provide your investment criteria for alerts.



SCAN TO **VIEW OUR**
WEEKLY FILMS &
SUBSCRIBE

Sneak Peeks

Every week, we unveil "Sneak Peeks," a feature showcasing exclusive properties before they hit Rightmove and other platforms.

The Landlord Club

Join our Landlord Club for weekly updates on legislation, market trends, and our Letting Director's 'Investment Pick of the Week' for optimal ROI.

HTSPMD

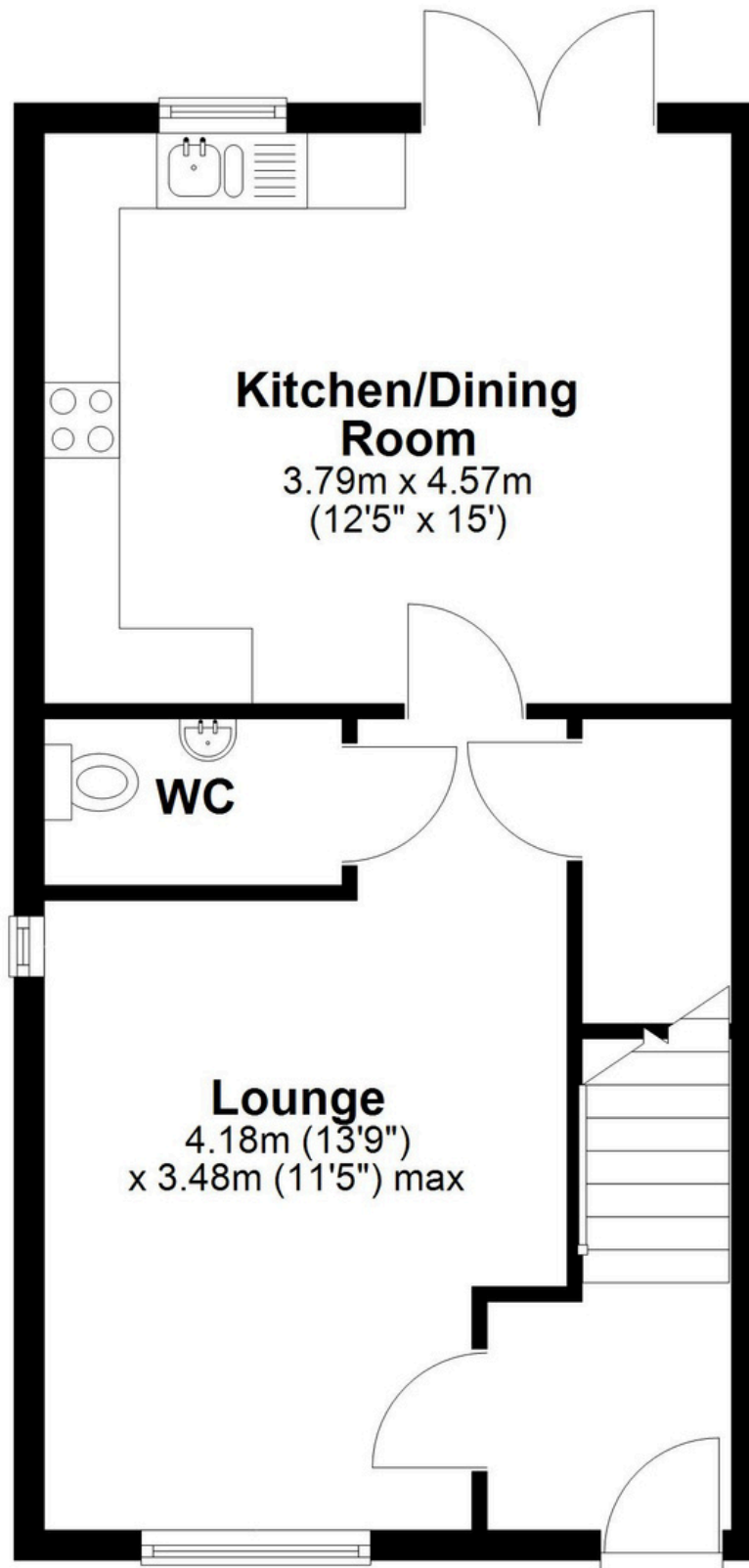
Tune into 'How's The Solihull Property Market Dom' weekly for a quick, insightful snapshot of the market.

The Mortgage Update

Get weekly insights and the best deals with our Mortgage Update, your shortcut to navigating the complex mortgage landscape confidently.

Ground Floor

Approx. 42.4 sq. metres (456.1 sq. feet)



Kitchen/Dining Room

3.79m x 4.57m
(12'5" x 15')

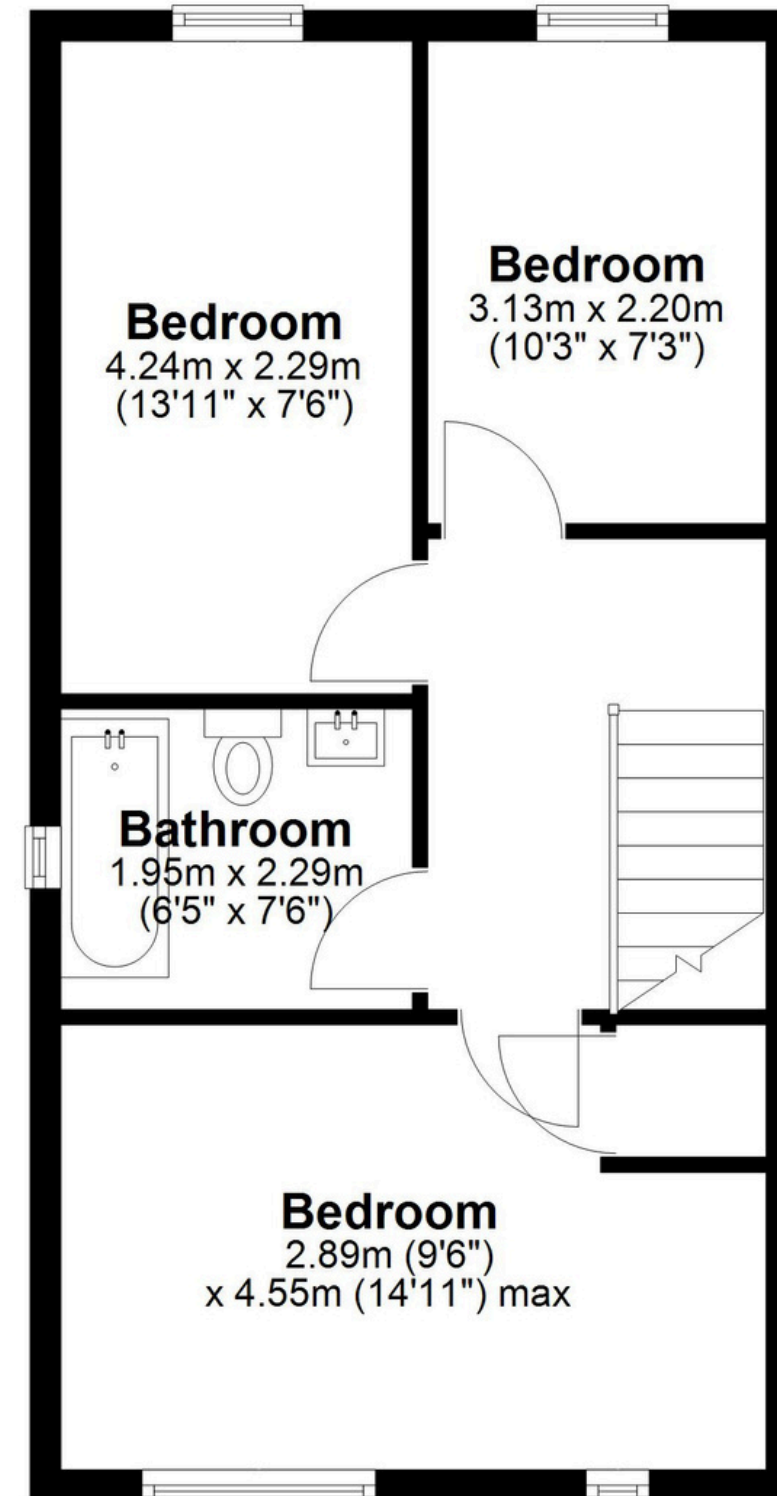
WC

Lounge

4.18m (13'9")
x 3.48m (11'5") max

First Floor

Approx. 42.4 sq. metres (456.6 sq. feet)



Bedroom

4.24m x 2.29m
(13'11" x 7'6")

Bedroom

3.13m x 2.20m
(10'3" x 7'3")

Bathroom

1.95m x 2.29m
(6'5" x 7'6")

Bedroom

2.89m (9'6")
x 4.55m (14'11") max

Total area: approx. 84.8 sq. metres (912.8 sq. feet)

This floor plan is for illustration purposes only, this is not intended to be a measured/scaled survey or comply with RICS guidelines. All measurements (including total floor area) openings, orientation and floor area are approximate. No details are guaranteed, they cannot be relied upon for any purpose and do not form part of any agreement. A party must rely upon its own inspection(s). No responsibility is taken for any error, omission, or mis-statement.

Plan produced using PlanUp.