

Need a Mortgage in principle
to make offers? Call us now
for quick assistance!
0121 775 0101



Do you need to sell?
Start your journey now!
Call us we can help.
0121 775 0101



SCAN FOR MORE INFO
SIZE - 1111 Sq Ft
TENURE - Freehold
COUNCIL TAX - Solihull Metropolitan Borough Council - C
BROADBAND - Upload Max 1000Mbps
Download Max 1800Mbps
MOBILE - Three O2 Vodafone
EPC - TBC
FLOODRISK - Very Low
SERVICES - Mains
COVENANTS - N/A

ULVERLEY GREEN ROAD

Solihull, B92

This delightful semi-detached house, built in 1890, offers a perfect blend of period character and modern convenience. Spanning an impressive 1,111 square feet, this property is ideal for families seeking spacious living accommodation.

FEATURES

- Characterful Property
- Dining Room with Period Style Fireplace
- Lounge with Feature Alcove
- Fitted Kitchen with Access to Garden & Utility Room
- Ground Floor Bathroom
- Principal Bedroom with En-Suite Shower Room
- Two Further Good Sized Bedrooms
- Private Rear Garden
- Walking Distance to Olton Train Station
- Potential to Extend to Rear (STPP)

Are you an investor
interested in expanding your
portfolio?

Call 0121 775 0101 to provide your investment criteria for alerts.



SCAN TO **VIEW OUR**
WEEKLY FILMS &
SUBSCRIBE

Sneak Peeks

Every week, we unveil "Sneak Peeks," a feature showcasing exclusive properties before they hit Rightmove and other platforms.

The Landlord Club

Join our Landlord Club for weekly updates on legislation, market trends, and our Letting Director's 'Investment Pick of the Week' for optimal ROI.

HTSPMD

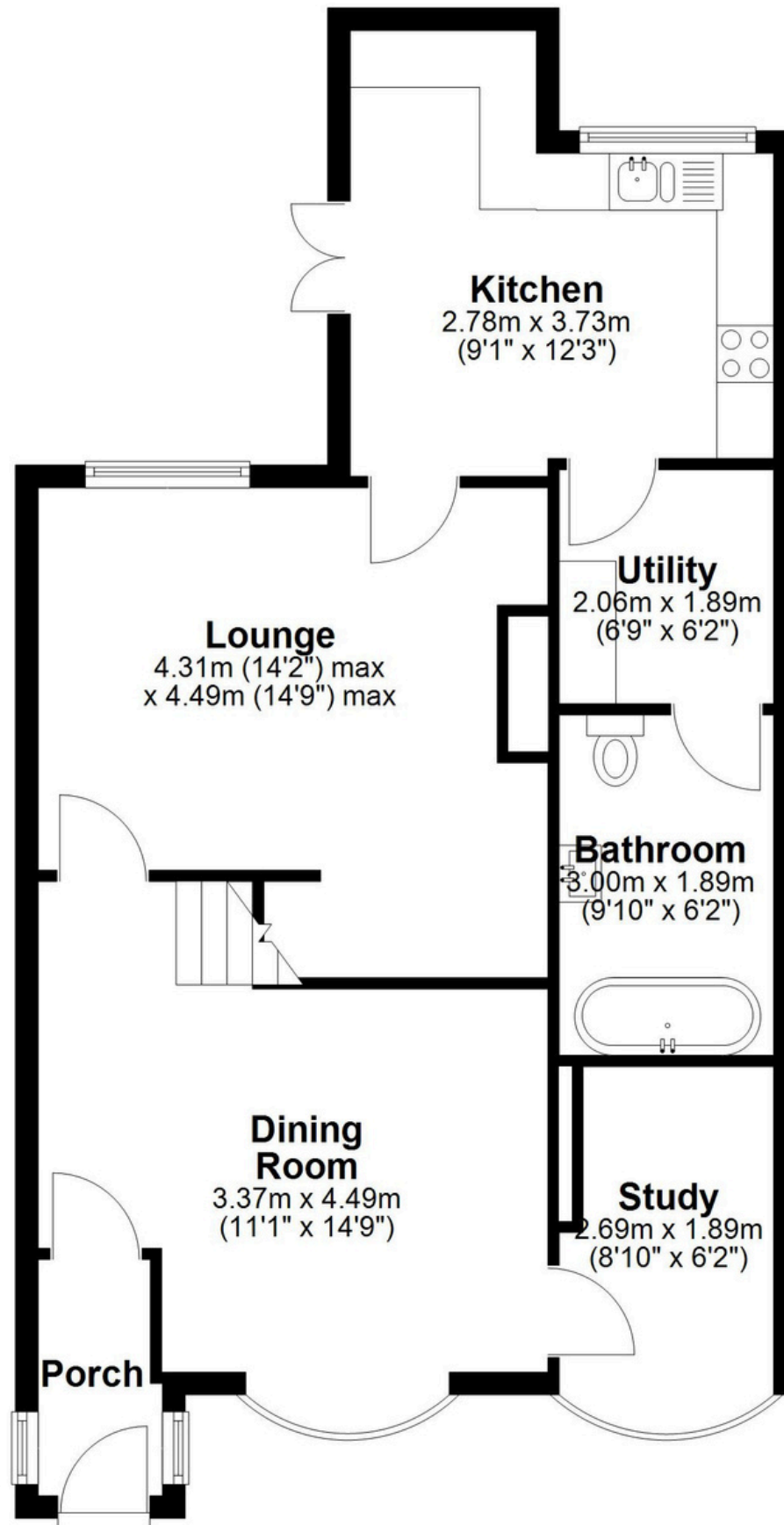
Tune into 'How's The Solihull Property Market Dom' weekly for a quick, insightful snapshot of the market.

The Mortgage Update

Get weekly insights and the best deals with our Mortgage Update, your shortcut to navigating the complex mortgage landscape confidently.

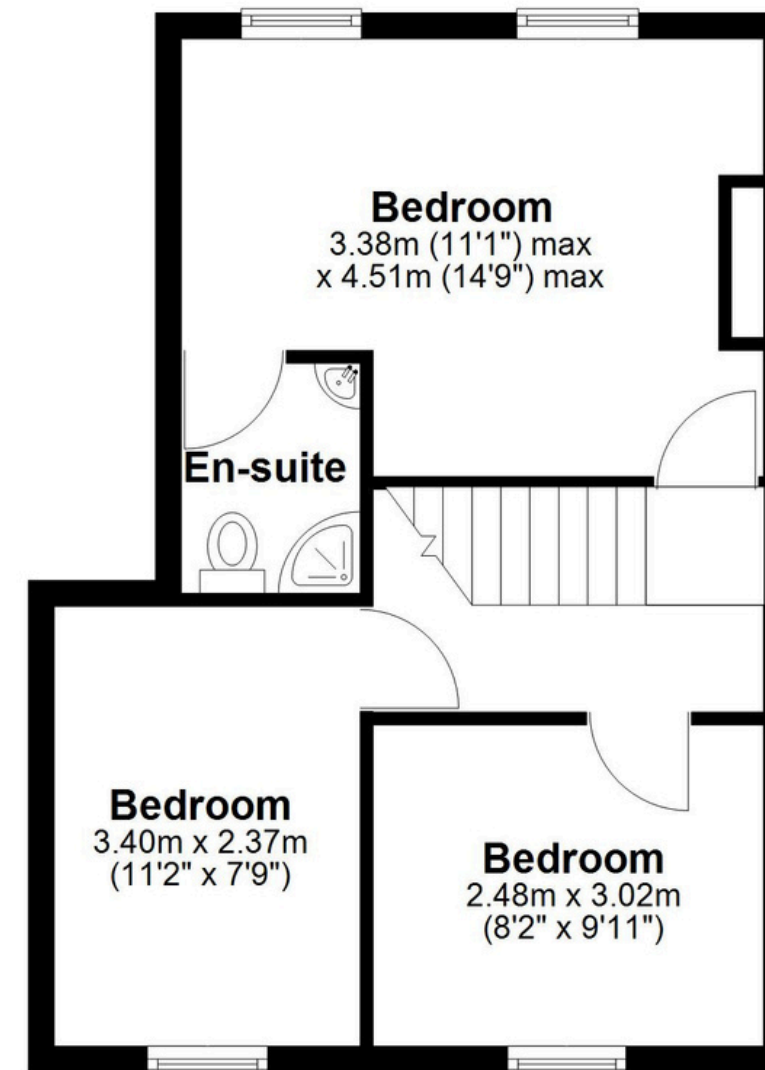
Ground Floor

Approx. 64.8 sq. metres (697.8 sq. feet)



First Floor

Approx. 38.4 sq. metres (413.6 sq. feet)



Total area: approx. 103.3 sq. metres (1111.4 sq. feet)

This floor plan is for illustration purposes only, this is not intended to be a measured/scaled survey or comply with RICS guidelines. All measurements (including total floor area) openings, orientation and floor area are approximate. No details are guaranteed, they cannot be relied upon for any purpose and do not form part of any agreement. A party must rely upon its own inspection(s). No responsibility is taken for any error, omission, or mis-statement.

Plan produced using PlanUp.