

Need a Mortgage in principle
to make offers? Call us now
for quick assistance!
0121 775 0101



Do you need to sell?
Start your journey now!
Call us we can help.
0121 775 0101



SCAN FOR MORE INFO
SIZE - 1718 Sq Ft
TENURE - Freehold
COUNCIL TAX - Solihull Metropolitan Borough Council - F
BROADBAND - Upload Max 1000Mbps
Download Max 1000Mbps
MOBILE - Three
EPC - D - 62
PARKING - Double Garage & Driveway Parking
FLOODRISK - Very Low
SERVICES - Mains
COVENANTS - N/A

Are you an investor
interested in expanding your
portfolio?

**Call 0121 775 0101 to provide your
investment criteria for alerts.**

WOODLEA DRIVE

Solihull, B91

Situated on the desirable Woodlea Drive in Solihull, this charming detached family home, offers a perfect blend of space and comfort. With no upward chain, this well-presented home is ready for you to move in and make it your own.

FEATURES

- Detached Family Home
- No Upward Chain
- Spacious Lounge Leading Through to a Dining Area
- Fitted Kitchen with Integrated Appliances
- Separate Utility Room
- Two Double Bedrooms with Fitted Wardrobes
- Larger Than Average Third Single Bedroom
- Four Piece Family Bathroom
- Private Rear Garden
- Driveway Parking & Double Garage
- Popular Residential Road in Solihull



SCAN TO **VIEW OUR**
WEEKLY FILMS &
SUBSCRIBE

Sneak Peeks

Every week, we unveil "Sneak Peeks," a feature showcasing exclusive properties before they hit Rightmove and other platforms.

The Landlord Club

Join our Landlord Club for weekly updates on legislation, market trends, and our Letting Director's 'Investment Pick of the Week' for optimal ROI.

HTSPMD

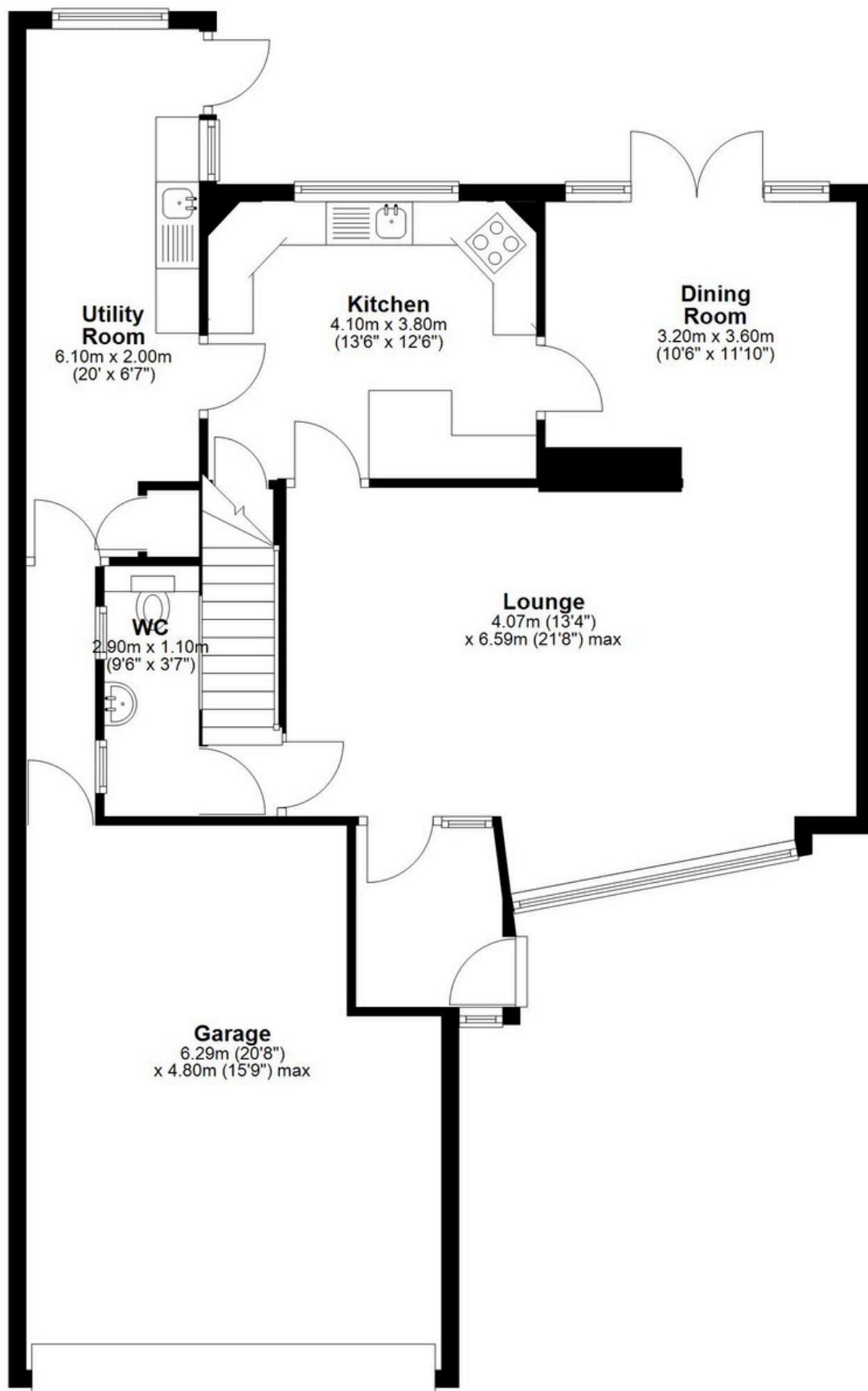
Tune into 'How's The Solihull Property Market Dom' weekly for a quick, insightful snapshot of the market.

The Mortgage Update

Get weekly insights and the best deals with our Mortgage Update, your shortcut to navigating the complex mortgage landscape confidently.

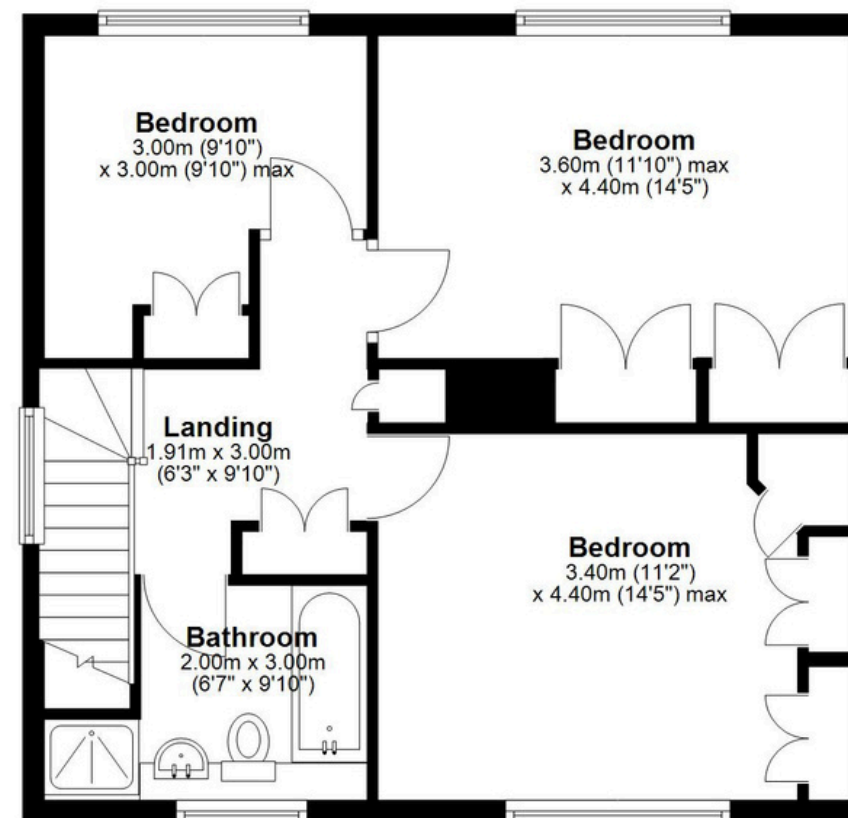
Ground Floor

Approx. 106.4 sq. metres (1145.2 sq. feet)



First Floor

Approx. 53.2 sq. metres (572.9 sq. feet)



Total area: approx. 159.6 sq. metres (1718.1 sq. feet)

This floor plan is for illustrative purposes only. It is not drawn to scale. Any measurements, floor areas, openings and orientations are approximate. No details are guaranteed, they cannot be relied upon for any purpose and do not form any part of any agreement. No Liability is taken for any error, omission or misstatement. A party must rely upon its own inspection(s).
Plan produced using PlanUp.

76 Woodlea Drive, Solihull