

Need a Mortgage in principle
to make offers? Call us now
for quick assistance!
0121 775 0101



Do you need to sell?
Start your journey now!
Call us we can help.
0121 775 0101



SCAN FOR MORE INFO
SIZE - 546 Sq Ft
TENURE - Freehold
COUNCIL TAX - Solihull Metropolitan Borough Council - C
BROADBAND - Upload Max 1000Mbps
Download Max 1800Mbps
EPC - D - 55
PARKING - For at least 2 Cars
FLOODRISK - Very Low
SERVICES - Mains
COVENANTS - N/A

25 RAINSBROOK DRIVE
Monkspath, B90 4TG
Offers in Excess of £300,000

Nestled at the end of a quiet cul-de-sac in the sought-after area of Monkspath, this charming semi-detached house presents an excellent opportunity for those seeking a delightful family home. Offered with no upward chain, this property is tastefully presented and ready for you to move in. With its combination of comfort, style, and potential, it is sure to appeal to a variety of buyers. Freehold upon Completion.

- FEATURES**
- End Terrace Property with No Upward Chain
 - Freehold Upon Completion
 - Lounge to Front
 - Dining Kitchen with Access to Rear Garden
 - Three Bedrooms
 - Family Shower Room
 - Low Maintenance Rear Garden
 - Driveway Parking
 - Quiet Cul-de-Sac
 - Convenient Location

Are you an investor
interested in expanding your
portfolio?

**Call 0121 775 0101 to provide your
investment criteria for alerts.**



SCAN TO **VIEW OUR**
WEEKLY FILMS &
SUBSCRIBE

Sneak Peeks

Every week, we unveil "Sneak Peeks," a feature showcasing exclusive properties before they hit Rightmove and other platforms.

The Landlord Club

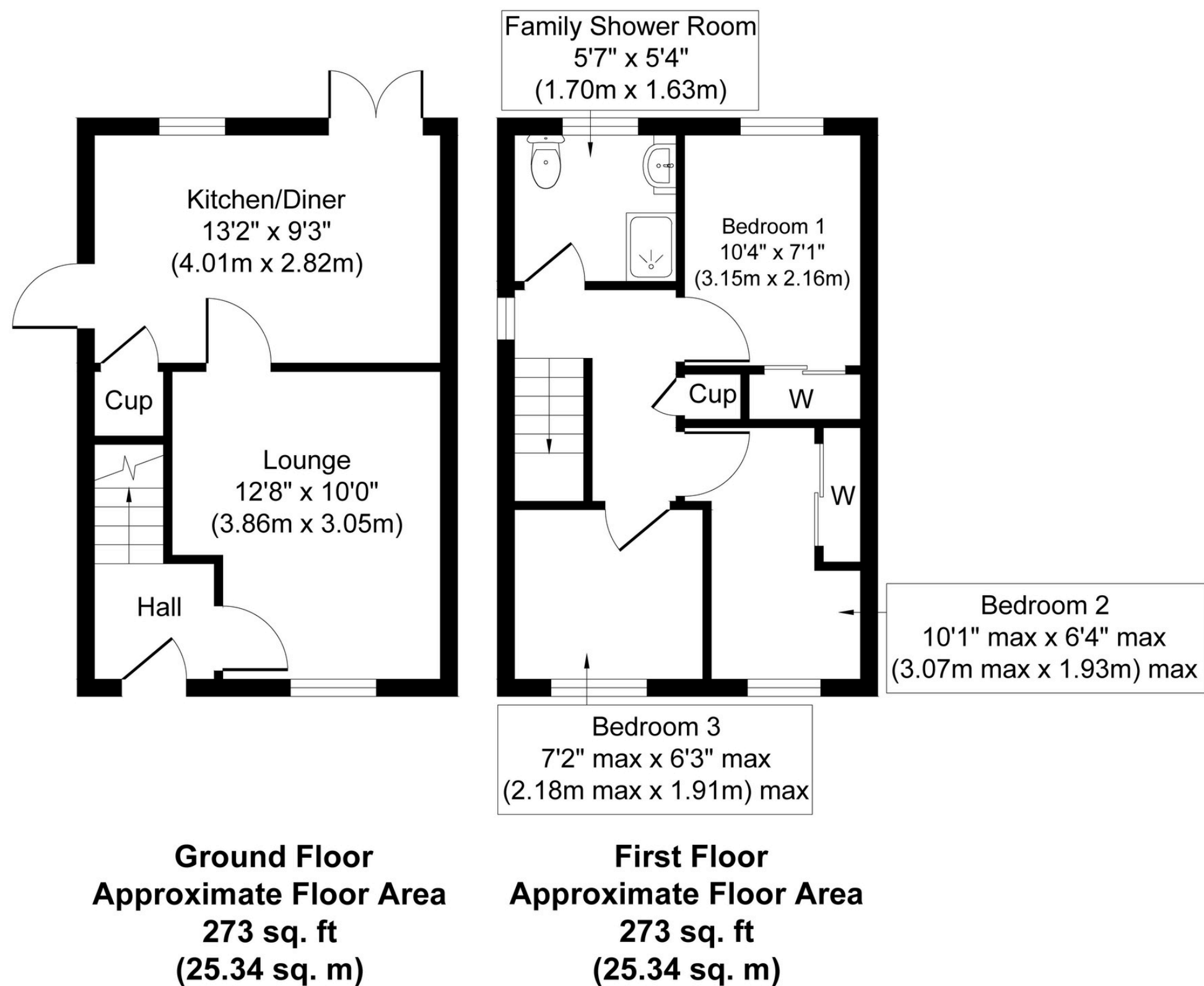
Join our Landlord Club for weekly updates on legislation, market trends, and our Letting Director's 'Investment Pick of the Week' for optimal ROI.

HTSPMD

Tune into 'How's The Solihull Property Market Dom' weekly for a quick, insightful snapshot of the market.

The Mortgage Update

Get weekly insights and the best deals with our Mortgage Update, your shortcut to navigating the complex mortgage landscape confidently.



Whilst every attempt has been made to ensure the accuracy of the floor plan contained here, measurements of doors, windows, rooms and any other items are approximate and no responsibility is taken for any error, omission, or mis-statement. The measurements should not be relied upon for valuation, transaction and/or funding purposes. This plan is for illustrative purposes only and should be used as such by any prospective purchaser or tenant.

The services, systems and appliances shown have not been tested and no guarantee as to their operability or efficiency can be given.

Copyright V360 Ltd 2025 | www.houseviz.com