



DM&Co.
— SALES & LETTINGS —

45 Sussex Road
CV5 8JW

This Beautifully Presented 3-Bedroom
Terraced House Is Available To Move Into
Immediately On A Part-Furnished Basis.



DETAILS

This stunning 3-bedroom terraced house is available for immediate occupancy on a part-furnished basis.

Entering into the property you are welcomed by the hallway which has access to a guest WC & a spacious lounge which seamlessly flows into a bright & airy kitchen/living area with integrated washing machine, fridge/freezer, electric hob & electric oven.

To the first floor, you have 2 double bedrooms, a single bedroom & a modern family bathroom.

Coventry Council Tax - Band B



OUTSIDE

To the front of the property you have a driveway which can accommodate 1-2 cars.

The rear garden is accessed by French doors in the extended kitchen/living area & is landscaped with a patio for entertaining & lawn at the bottom.

VIEWINGS

At short notice with DM & Co. Homes on
0121 775 0101 or by email
lettings@dmandcohomes.co.uk



GENERAL INFORMATION

This property is well located with good access to Coventry, Kenilworth & Warwick.

Mobile Coverage In Your Area - EE, Vodafone, Three, O2

Broadband Coverage In Your Area - Openreach, Virgin Media, CityFibre



OTHER SERVICES

DM & Co are pleased to offer the following services:-

Residential Lettings: If you are considering letting your property, please contact the office on 0121 775 0101.

Mortgage Services: If you would like advice on the best mortgages available, please contact us on 0121 775 0101.



Agents Note: Whilst every care has been taken to prepare these sales particulars, they are for guidance purposes only. All measurements are approximate and are for general guidance purposes only and whilst every care has been taken to ensure their accuracy, they should not be relied upon and potential buyers are advised to recheck the measurements.

FEATURES

- Immaculate 3-Bedroom Terraced House
- Modern Kitchen/Living Area With Integrated Appliances
- Spacious Lounge With Bay Windows
- Guest WC
- Two Double Bedrooms & Single Bedroom
- Modern Family Bathroom
- Landscaped Rear Garden With Entertaining Space
- Holding Deposit - £311.00
- Security Deposit - £1557.69
- Available NOW On A Part-Furnished Basis

VIEWING

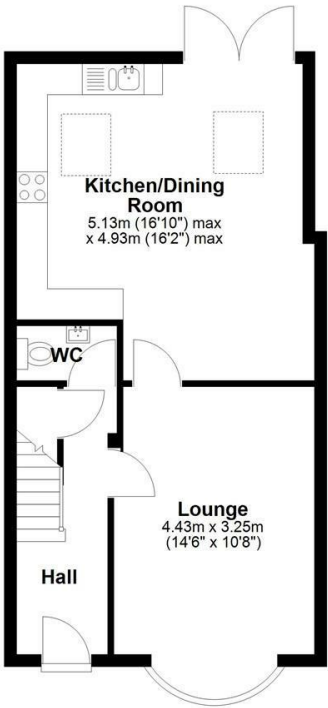
Book a viewing with Sole Agents DM & Co.
Premium by phone or email:

📞 0121 775 0101

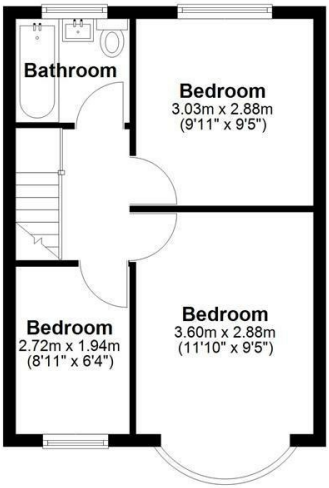
@ lettings@dmandcohomes.co.uk

Agents Note: Whilst every care has been taken to prepare these sales particulars, they are for guidance purposes only. All measurements are approximate and are for general guidance purposes only and whilst every care has been taken to ensure their accuracy, they should not be relied upon and potential buyers are advised to recheck the measurements

Ground Floor
Approx. 46.6 sq. metres (501.6 sq. feet)



First Floor
Approx. 33.1 sq. metres (356.7 sq. feet)



Total area: approx. 79.7 sq. metres (858.3 sq. feet)

This floor plan is for illustration purposes only, this is not intended to be a measured/scaled survey or comply with RICS guidelines. All measurements (including total floor area) openings, orientation and floor area are approximate. No details are guaranteed, they cannot be relied upon for any purpose and do not form part of any agreement. A party must rely upon its own inspection(s). No responsibility is taken for any error, omission, or mis-statement. Plan produced using PlanUp.

