

Need a Mortgage in principle  
to make offers? Call us now  
for quick assistance!  
**0121 775 0101**



Do you need to sell?  
Start your journey now!  
Call us we can help.  
**01564 777 314**



**SCAN FOR MORE INFO**  
**SIZE** - 539 Sq Ft  
**TENURE** - Freehold  
**COUNCIL TAX** - Warwick District Council - C  
**BROADBAND** - Upload Max 220Mbps  
Download Max 1800Mbps  
**EPC** - E - 49  
**PARKING** - 4 Spaces  
**FLOODRISK** - Very Low  
**SERVICES** - Mains  
**COVENANTS** - N/A

### 3 Appletree Cottages

Old Warwick Road, Rowington, CV35 7BS  
Offers in the Region of £350,000

Nestled in the picturesque village of Rowington, this charming cottage beautifully marries traditional character with modern comforts. Built in 1850, this delightful property has been meticulously restored, ensuring a warm and inviting atmosphere throughout.

#### FEATURES

- A Beautiful Character Cottage Retaining Many Original Features
- Fully Renovated Throughout
- Lounge with Log Burner & Feature Beams
- Country Style Kitchen with Integrated Appliances
- Ground Floor Four Piece Bathroom
- Two First Floor Double Bedrooms
- Landscaped Garden
- Private Parking
- Panoramic Countryside Views

Are you an investor  
interested in expanding your  
portfolio?

Call **01564 777 314** to provide your  
investment criteria for alerts.



SCAN TO **VIEW OUR**  
**WEEKLY FILMS &**  
**SUBSCRIBE**

#### Sneak Peeks

Every week, we unveil "Sneak Peeks," a feature showcasing exclusive properties before they hit Rightmove and other platforms.

#### The Landlord Club

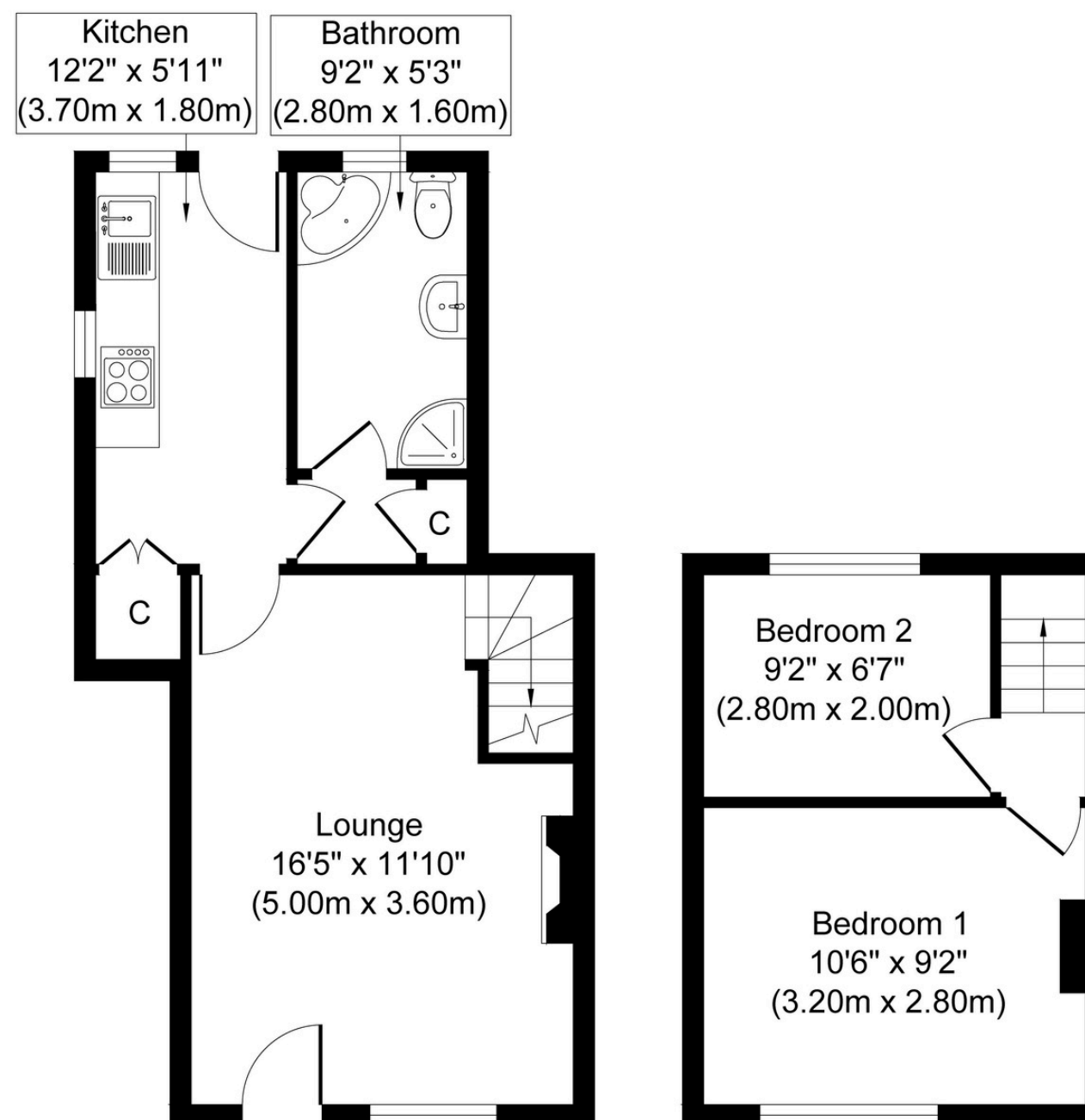
Join our Landlord Club for weekly updates on legislation, market trends, and our Letting Director's 'Investment Pick of the Week' for optimal ROI.

#### HTSPMD

Tune into 'How's The Solihull Property Market Dom' weekly for a quick, insightful snapshot of the market.

#### The Mortgage Update

Get weekly insights and the best deals with our Mortgage Update, your shortcut to navigating the complex mortgage landscape confidently.



**Ground Floor**  
**Approximate Floor Area**  
**345 sq. ft**  
**(32.02 sq. m)**

**First Floor**  
**Approximate Floor Area**  
**194 sq. ft**  
**(18.00 sq. m)**

Whilst every attempt has been made to ensure the accuracy of the floor plan contained here, measurements of doors, windows, rooms and any other items are approximate and no responsibility is taken for any error, omission, or mis-statement. The measurements should not be relied upon for valuation, transaction and/or funding purposes. This plan is for illustrative purposes only and should be used as such by any prospective purchaser or tenant.

The services, systems and appliances shown have not been tested and no guarantee as to their operability or efficiency can be given.

**Copyright V360 Ltd 2025 | [www.houseviz.com](http://www.houseviz.com)**