

Need a Mortgage in principle
to make offers? Call us now
for quick assistance!
0121 775 0101



Do you need to sell?
Start your journey now!
Call us we can help.
01564 777 314



SCAN FOR MORE INFO
SIZE - 1250 Sq Ft
TENURE - Freehold
COUNCIL TAX - Solihull Metropolitan Borough Council - E
BROADBAND - Upload Max 1000Mbps
Download Max 1800Mbps
MOBILE - 02
EPC - C - 72
PARKING - Ample Driveway & Double Garage
FLOODRISK - Very Low
SERVICES - Mains
COVENANTS - N/A

Are you an investor
interested in expanding your
portfolio?

**Call 01564 777 314 to provide your
investment criteria for alerts.**

AUSTREY CLOSE

Knowle, B93

Situated at the end of a quiet cul-de-sac, this charming detached bungalow presents a wonderful opportunity for those seeking single-storey living or looking to downsize. The property is ideally located, backing onto the picturesque Knowle Park, offering a serene backdrop for your new home. This bungalow, while requiring some updating, offers immense potential and is a fantastic opportunity for those looking to create their ideal living space in a sought-after location.

FEATURES

- Detached Bungalow Offered with No Upward Chain
- Requiring Some Modernisation
- Lounge/Dining Room
- Fitted Kitchen
- Rear Living Room
- Two Good Sized Bedrooms
- Bathroom & Further Shower Room
- Private Rear Garden
- Ample Driveway Parking with Double Garage
- Walking Distance to Knowle Village Centre



**SCAN TO VIEW OUR
WEEKLY FILMS &
SUBSCRIBE**



Sneak Peeks

Every week, we unveil "Sneak Peeks," a feature showcasing exclusive properties before they hit Rightmove and other platforms.



The Landlord Club

Join our Landlord Club for weekly updates on legislation, market trends, and our Letting Director's 'Investment Pick of the Week' for optimal ROI.



HTSPMD

Tune into 'How's The Solihull Property Market Dom' weekly for a quick, insightful snapshot of the market.

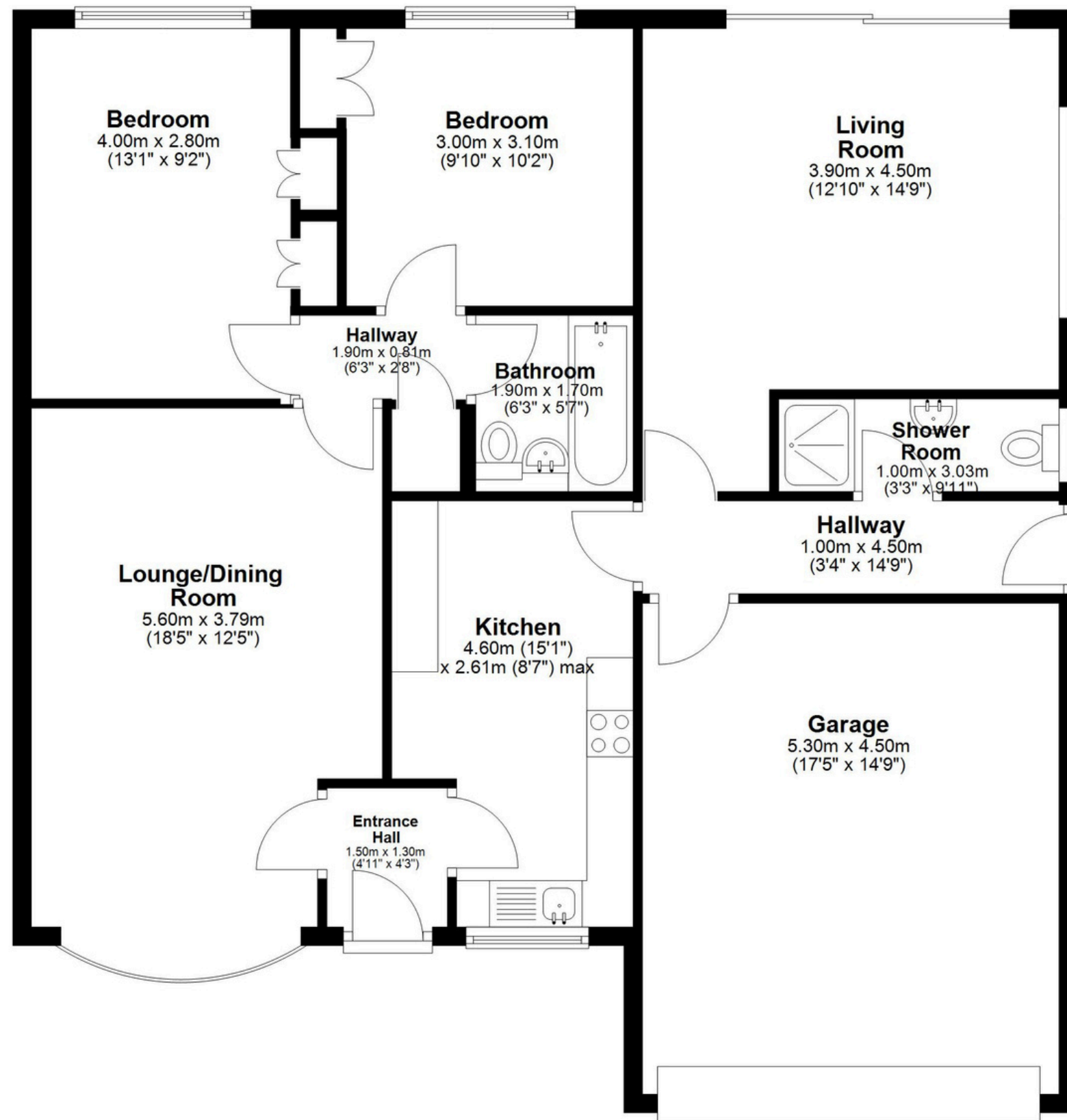


The Mortgage Update

Get weekly insights and the best deals with our Mortgage Update, your shortcut to navigating the complex mortgage landscape confidently.

Ground Floor

Approx. 116.2 sq. metres (1250.8 sq. feet)



Total area: approx. 116.2 sq. metres (1250.8 sq. feet)

This floor plan is for illustrative purposes only. It is not drawn to scale. Any measurements, floor areas, openings and orientations are approximate. No details are guaranteed, they cannot be relied upon for any purpose and do not form any part of any agreement. No Liability is taken for any error, omission or misstatement.

A party must rely upon its own inspection(s).

Plan produced using PlanUp.

17 Austrey Close, Knowle