

Need a Mortgage in principle
to make offers? Call us now
for quick assistance!
0121 775 0101



Do you need to sell?
Start your journey now!
Call us we can help.
01564 777 314



AYLESBURY ROAD

Hockley Heath, B94

SCAN FOR MORE INFO
SIZE - 2915 Sq Ft
TENURE - Freehold
COUNCIL TAX - Solihull Metropolitan Borough Council - G
BROADBAND - Upload Max 220Mbps
Download Max 1800Mbps
EPC - 76 - C
PARKING - Driveway Parking for Up To 4 Vehicles
FLOODRISK - Very Low
SERVICES - Mains
COVENANTS - N/A

Situated on Aylesbury Road in the village of Hockley Heath, Solihull, this exceptional detached family home offers a perfect blend of modern living and serene countryside charm. Spanning an impressive 2,910 square feet, this beautifully presented property is set behind secure gates and backs onto picturesque greenbelt land, ensuring both privacy and stunning views.

FEATURES

- Beautifully Presented & Extended Detached Family Home
- Two Versatile Front Reception Rooms
- Spacious Lounge with Feature Log Burner & Bi-Fold Doors
- Stunning Breakfast Kitchen/Dining/Family Room with Bi-Fold Doors
- Principal Bedroom with Built-In Wardrobes & En-Suite Bathroom
- Two Further First floor Bedrooms , One with an En-Suite Shower Room
- Luxury Family Bathroom
- Three Double Second Floor Bedrooms & Shower Room
- Large Private Rear Garden & Driveway Parking
- Semi-Rural Location Close to Local Amenities

Are you an investor
interested in expanding your
portfolio?

**Call 01564 777 314 to provide your
investment criteria for alerts.**



Sneak Peeks

Every week, we unveil "Sneak Peeks," a feature showcasing exclusive properties before they hit Rightmove and other platforms.

The Landlord Club

Join our Landlord Club for weekly updates on legislation, market trends, and our Letting Director's 'Investment Pick of the Week' for optimal ROI.

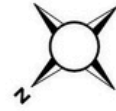
HTSPMD

Tune into 'How's The Solihull Property Market Dom' weekly for a quick, insightful snapshot of the market.

The Mortgage Update

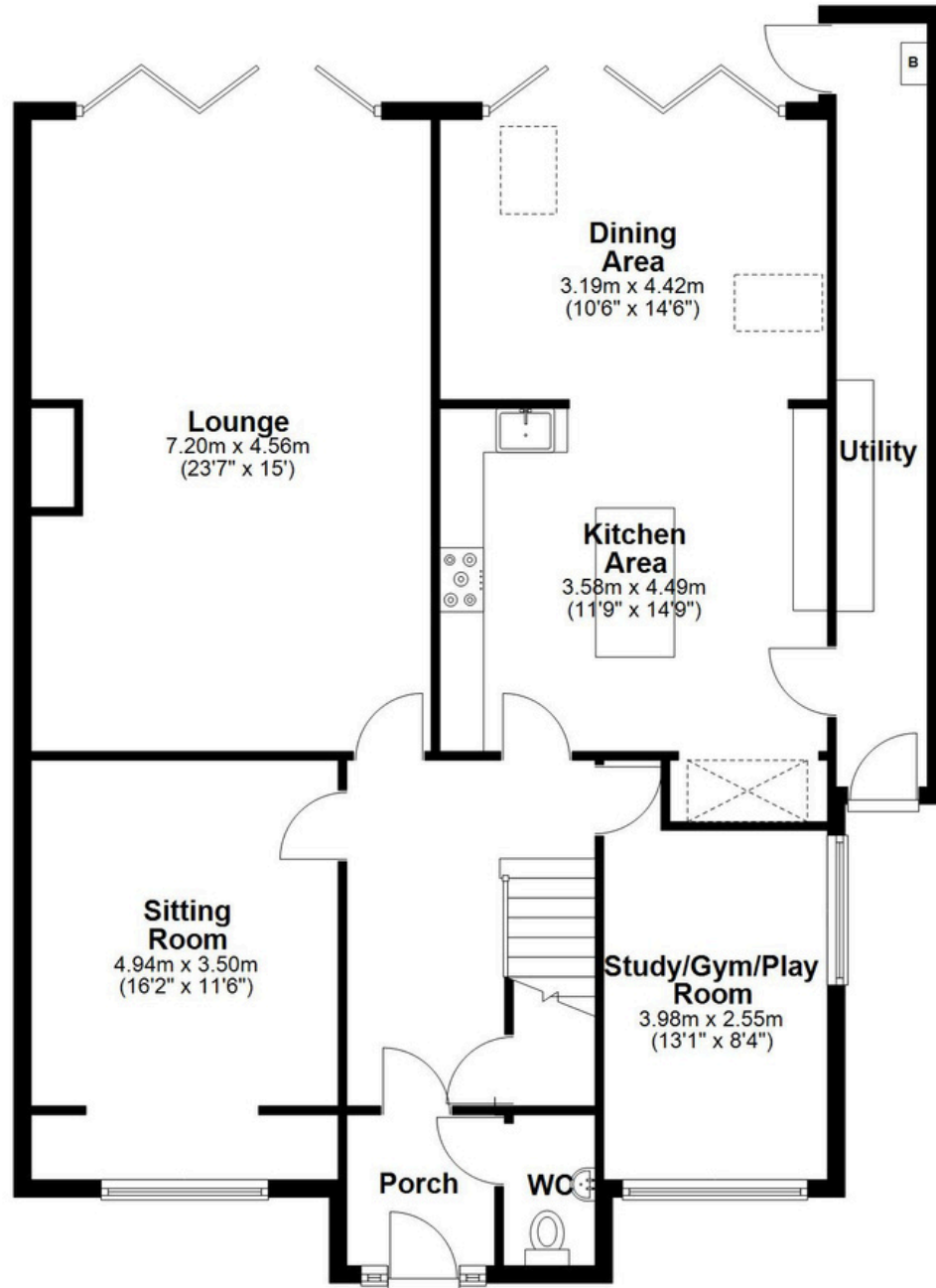
Get weekly insights and the best deals with our Mortgage Update, your shortcut to navigating the complex mortgage landscape confidently.

SCAN TO VIEW OUR
WEEKLY FILMS &
SUBSCRIBE



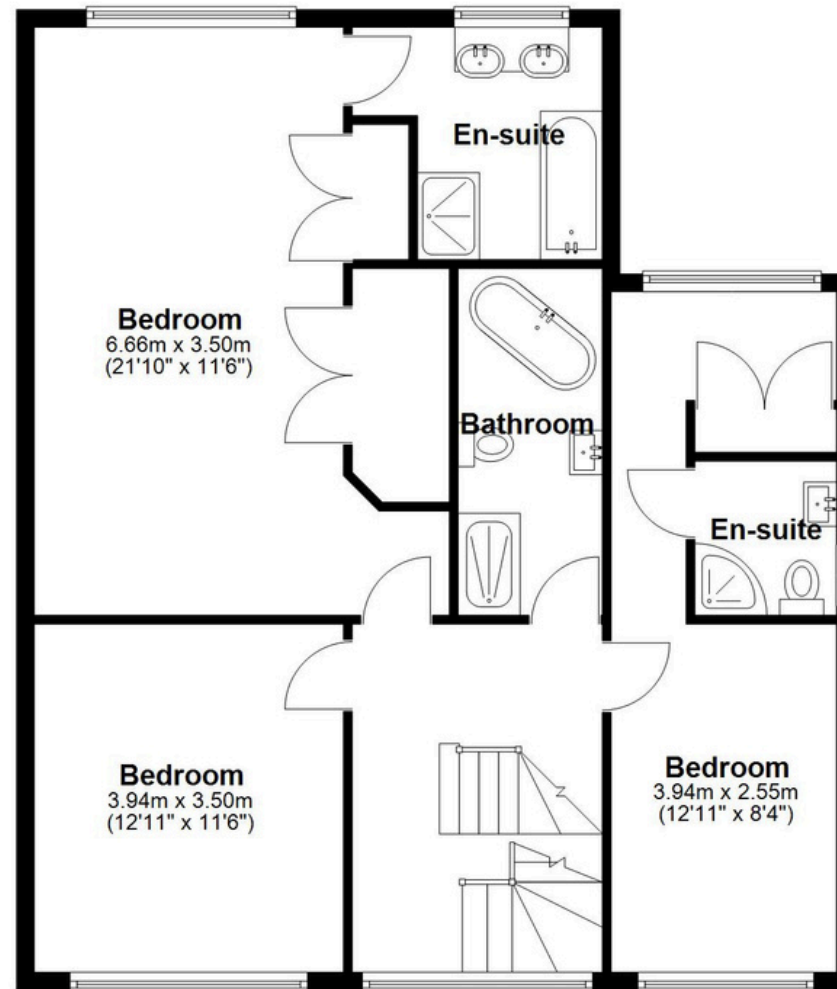
Ground Floor

Approx. 120.9 sq. metres (1301.5 sq. feet)



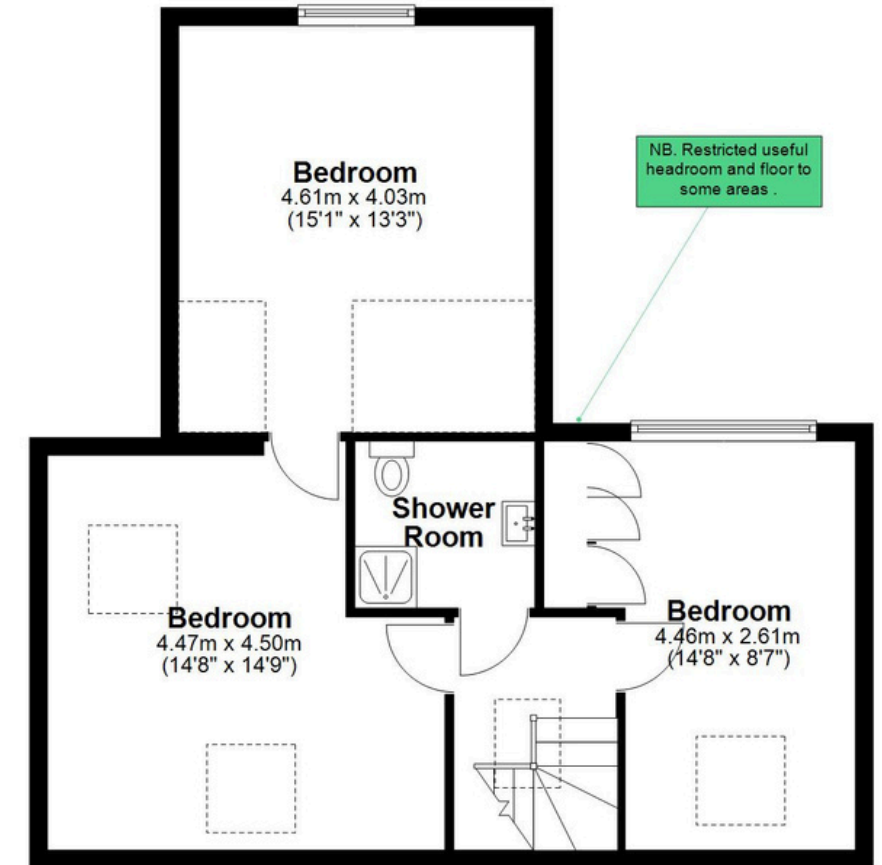
First Floor

Approx. 89.4 sq. metres (962.3 sq. feet)



Second Floor

Approx. 60.5 sq. metres (651.5 sq. feet)



NB. Restricted useful headroom and floor to some areas .

Total area: approx. 270.8 sq. metres (2915.3 sq. feet)

This floor plan is for illustration purposes only, this is not intended to be a measured/scaled survey or comply with RICS guidelines. All measurements (including total floor area) openings, orientation and floor area are approximate. No details are guaranteed, they cannot be relied upon for any purpose and do not form part of any agreement. A party must rely upon its own inspection(s). No responsibility is taken for any error, omission, or mis-statement.
Plan produced using PlanUp.