

Need a Mortgage in principle
to make offers? Call us now
for quick assistance!
0121 775 0101



Do you need to sell?
Start your journey now!
Call us we can help.
01564 777 314



SCAN FOR MORE INFO
SIZE - 1313Sq Ft
TENURE - Freehold
COUNCIL TAX - Solihull Metropolitan Borough Council - D
BROADBAND - Upload Max 1000Mbps
Download Max 1800Mbps
MOBILE - 02
EPC - C - 75
PARKING - Driveway
FLOODRISK - Very Low
SERVICES - Mains
COVENANTS - N/A

15 Ullenhall Road
Knowle, B93 9JD
Offers in the region of £550,000

Situated in a quiet cul-de-sac, this beautifully presented semi-detached house offers a perfect blend of modern living and potential for further enhancement. This delightful home presents an excellent opportunity for families seeking comfort and convenience in a desirable location.

FEATURES

- Extended Semi-Detached Property in Quiet Cul-de-Sac
- Lounge with Bay Window to Front Elevation
- Stunning Open Plan Kitchen/Dining/Family Room with Bi-Fold Doors
- Ground Floor Shower Room & Boot Room
- Separate Utility Room
- Principal Double Bedroom
- Two Further Bedrooms
- Modern Family Bathroom
- Low Maintenance Rear Garden
- Ample Driveway Parking
- Arden Academy Catchment Area

Are you an investor
interested in expanding your
portfolio?

**Call 01564 777 314 to provide your
investment criteria for alerts.**



SCAN TO **VIEW OUR**
WEEKLY FILMS &
SUBSCRIBE



Sneak Peeks

Every week, we unveil "Sneak Peeks," a feature showcasing exclusive properties before they hit Rightmove and other platforms.



The Landlord Club

Join our Landlord Club for weekly updates on legislation, market trends, and our Letting Director's 'Investment Pick of the Week' for optimal ROI.



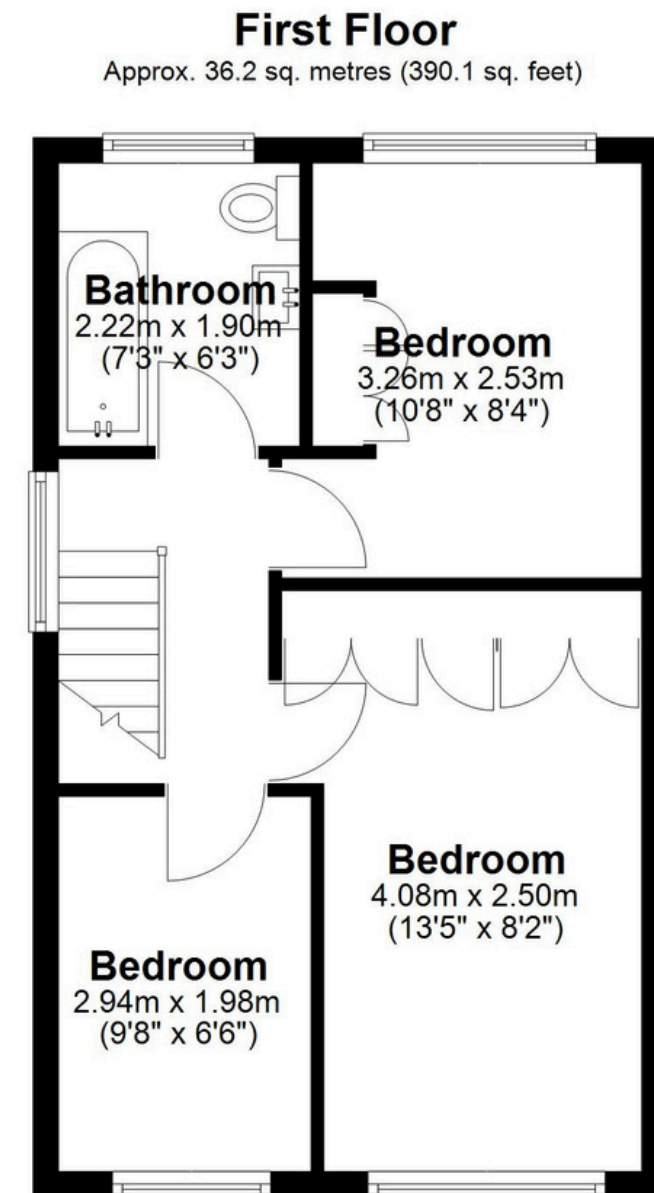
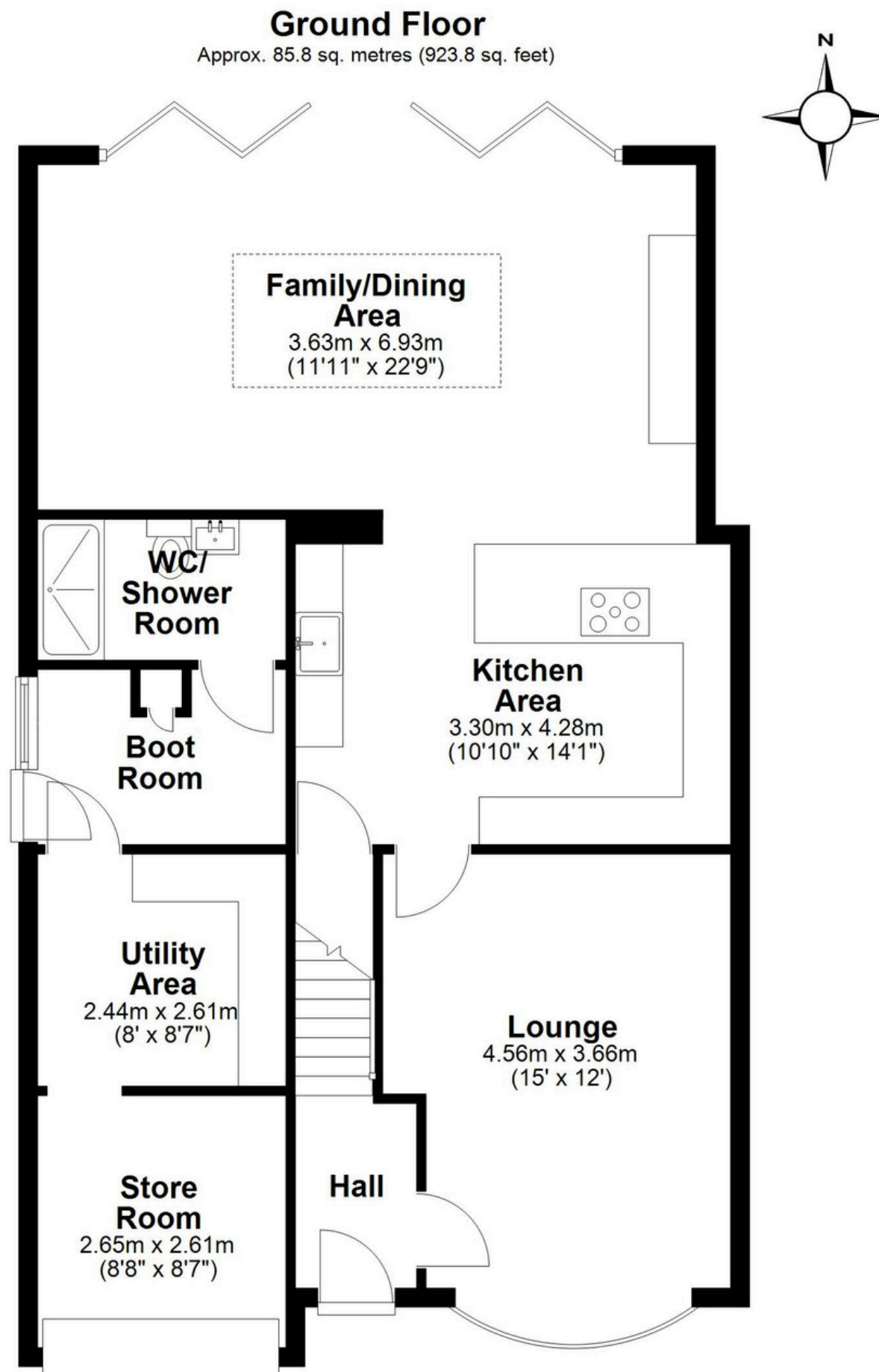
HTSPMD

Tune into 'How's The Solihull Property Market Dom' weekly for a quick, insightful snapshot of the market.



The Mortgage Update

Get weekly insights and the best deals with our Mortgage Update, your shortcut to navigating the complex mortgage landscape confidently.



Total area: approx. 122.1 sq. metres (1313.9 sq. feet)

This floor plan is for illustration purposes only, this is not intended to be a measured/scaled survey or comply with RICS guidelines. All measurements (including total floor area) openings, orientation and floor area are approximate. No details are guaranteed, they cannot be relied upon for any purpose and do not form part of any agreement.
A party must rely upon its own inspection(s). No responsibility is taken for any error, omission, or mis-statement.
Plan produced using PlanUp.