

Need a Mortgage in principle
to make offers? Call us now
for quick assistance!
0121 775 0101



Do you need to sell?
Start your journey now!
Call us we can help.
0121 775 0101



SCAN FOR MORE INFO
SIZE - 785 Sq Ft
TENURE - Leasehold with 997 years remaining
SERVICE CHARGE - £2,200
COUNCIL TAX - Birmingham City Council - D
BROADBAND - Upload Max 1000Mbps
Download Max 100Mbps
MOBILE - O2
EPC - B - 84
PARKING - Allocated Parking Space
FLOODRISK - Very Low
SERVICES - Mains
COVENANTS - N/A

Are you an investor
interested in expanding your
portfolio?

**Call 0121 775 0101 to provide your
investment criteria for alerts.**

Apt 9 CARLTON LODGE

School Road, Moseley, B13 9SN
Offers in the Region of £275,000

Situated in the vibrant area of Moseley, this delightful second floor apartment offers a modern living experience in a highly sought-after location. This two-year-old property is presented in immaculate condition and is available with no upward chain, making it an ideal choice for both first-time buyers and those looking to downsize.

FEATURES

- Modern Second Floor Apartment
- High Specification Throughout
- Open Plan Lounge/Dining/Fitted Kitchen
- Principal Bedroom with En-Suite Shower Room
- Second Good Sized Bedroom
- Modern Bathroom
- Allocated Parking
- Well Maintained Grounds
- Easy Access to Birmingham City Centre
- Vibrant Location



SCAN TO **VIEW OUR**
WEEKLY FILMS &
SUBSCRIBE

Sneak Peeks

Every week, we unveil "Sneak Peeks," a feature showcasing exclusive properties before they hit Rightmove and other platforms.

The Landlord Club

Join our Landlord Club for weekly updates on legislation, market trends, and our Letting Director's 'Investment Pick of the Week' for optimal ROI.

HTSPMD

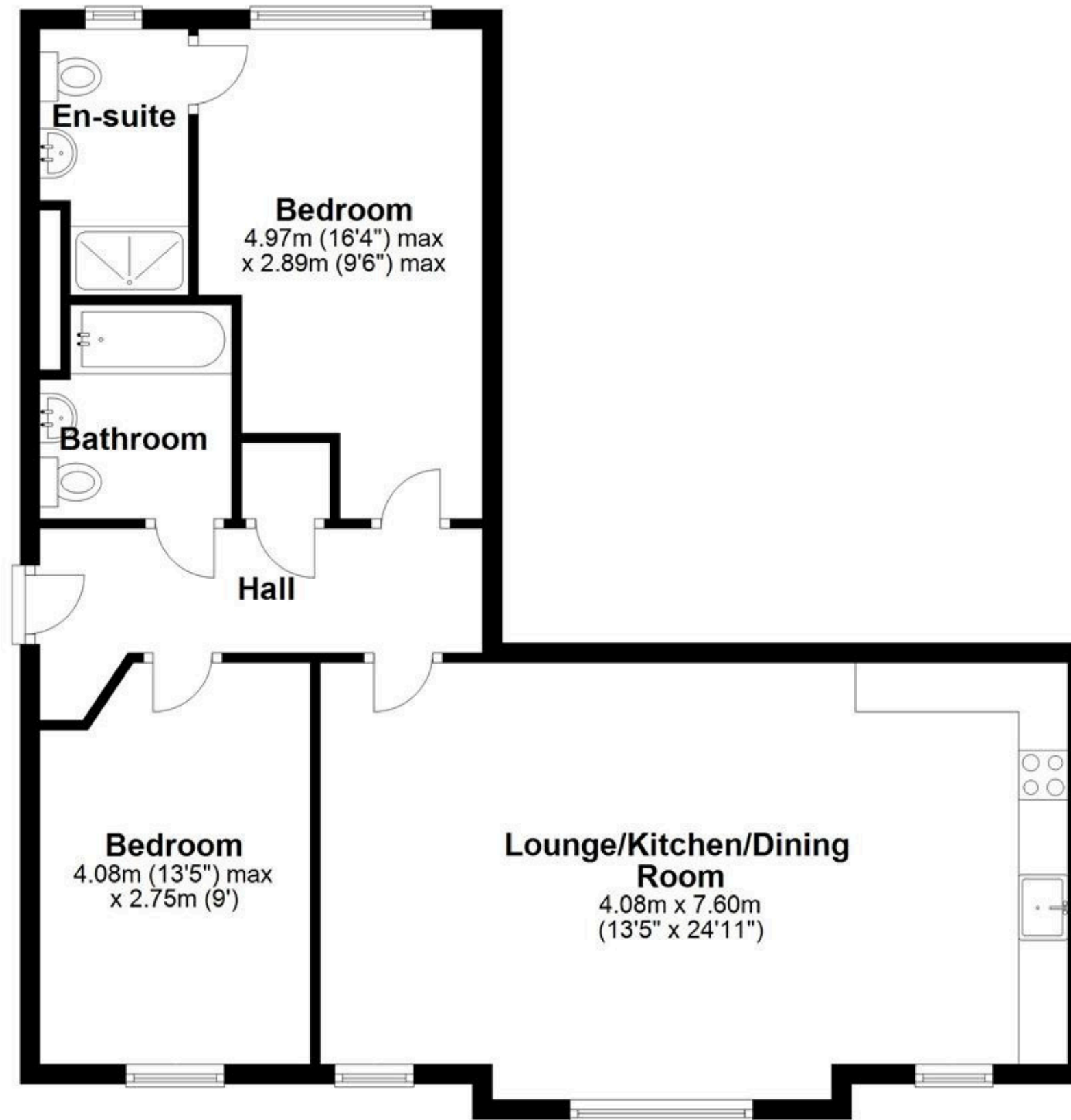
Tune into 'How's The Solihull Property Market Dom' weekly for a quick, insightful snapshot of the market.

The Mortgage Update

Get weekly insights and the best deals with our Mortgage Update, your shortcut to navigating the complex mortgage landscape confidently.

Floor Plan

Approx. 72.9 sq. metres (785.2 sq. feet)



Total area: approx. 72.9 sq. metres (785.2 sq. feet)

This floor plan is for illustration purposes only, this is not intended to be a measured/scaled survey or comply with RICS guidelines. All measurements (including total floor area) openings and orientation floor area and are approximate. No details are guaranteed, they cannot be relied upon for any purpose and do not form part of any agreement. A party must rely upon its own inspection(s). No responsibility is taken for any error, omission, or misstatement.

Plan produced using PlanUp.