

Need a Mortgage in principle  
to make offers? Call us now  
for quick assistance!  
**0121 775 0101**



Do you need to sell?  
Start your journey now!  
Call us we can help.  
**01564 777 314**



**SCAN FOR MORE INFO**  
**SIZE** - 1912 Sq Ft  
**TENURE** - Freehold  
**COUNCIL TAX** - Solihull Metropolitan Borough Council - G  
**BROADBAND** - Upload Max 1000Mbps  
Download Max 1000Mbps  
**MOBILE** - EE  
**EPC** - D - 64  
**PARKING** - Driveway & Single Garage  
**FLOODRISK** - Very Low  
**SERVICES** - Mains  
**COVENANTS** - N/A

## 7 Beconsfield Close

**Knowle, B93 8QZ**  
**Offers Over £900,000**

A delightful four-bedroom detached home with two reception rooms, two bathrooms, a study and a west-facing garden. Perfectly positioned by Dorridge Park and within walking distance of the station and village amenities.

### FEATURES

- Delightful Detached Family Home
- Spacious Lounge
- Traditional Dining Room with French Doors to Garden
- Modern Breakfast Kitchen & Large Separate Utility Room
- Three Double Bedrooms with Built in Wardrobes
- Study Room with Velux Windows
- Modern Shower Room & Separate Family Bathroom
- Private, Mature Rear Garden
- Driveway Parking & Single Garage
- Cul-de-Sac Location Close to Dorridge Park

Are you an investor  
interested in expanding your  
portfolio?

**Call 01564 777 314 to provide your investment criteria for alerts.**



SCAN TO **VIEW OUR**  
**WEEKLY FILMS &**  
**SUBSCRIBE**

### Sneak Peeks

Every week, we unveil "Sneak Peeks," a feature showcasing exclusive properties before they hit Rightmove and other platforms.

### The Landlord Club

Join our Landlord Club for weekly updates on legislation, market trends, and our Letting Director's 'Investment Pick of the Week' for optimal ROI.

### HTSPMD

Tune into 'How's The Solihull Property Market Dom' weekly for a quick, insightful snapshot of the market.

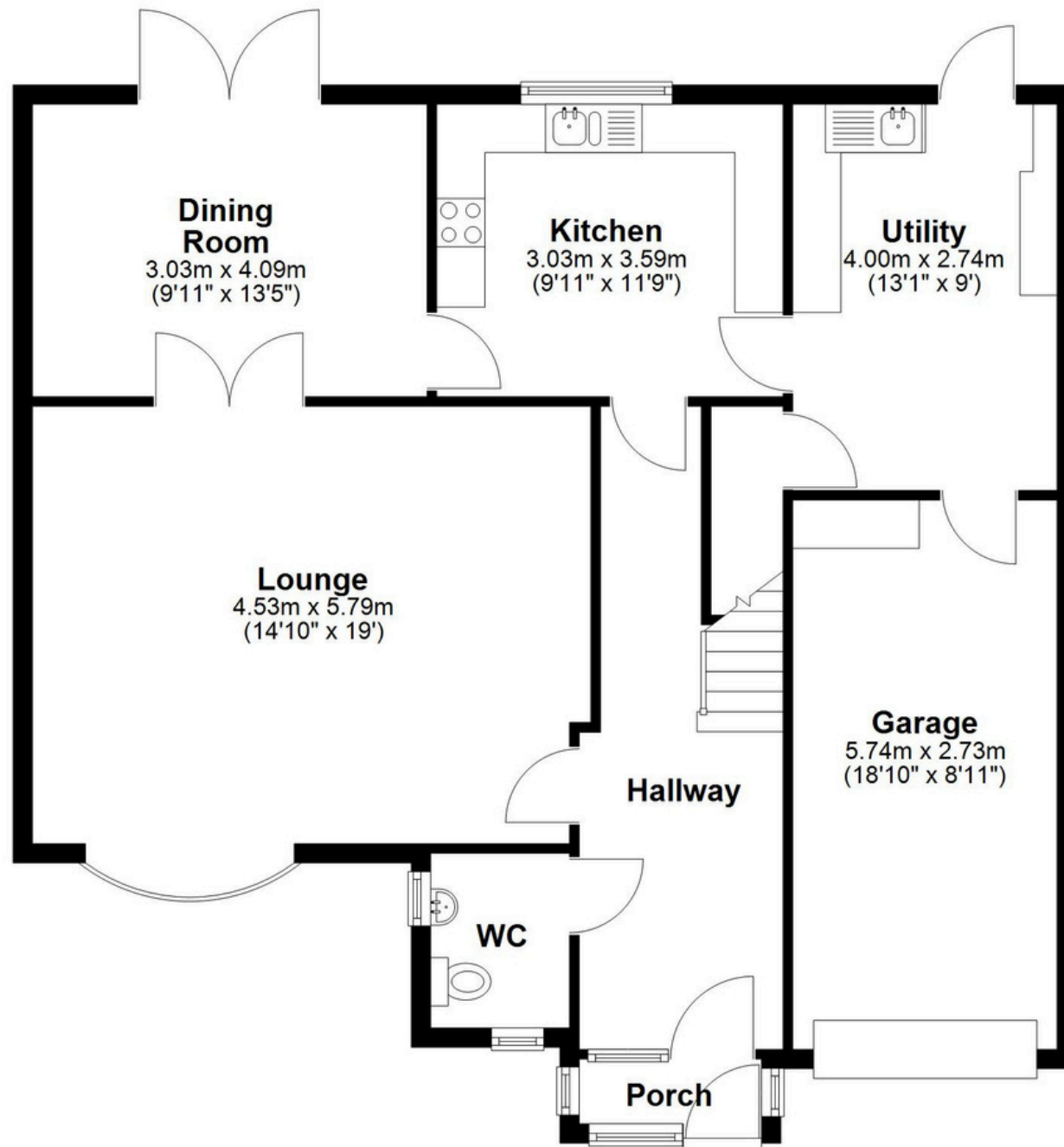
### The Mortgage Update

Get weekly insights and the best deals with our Mortgage Update, your shortcut to navigating the complex mortgage landscape confidently.



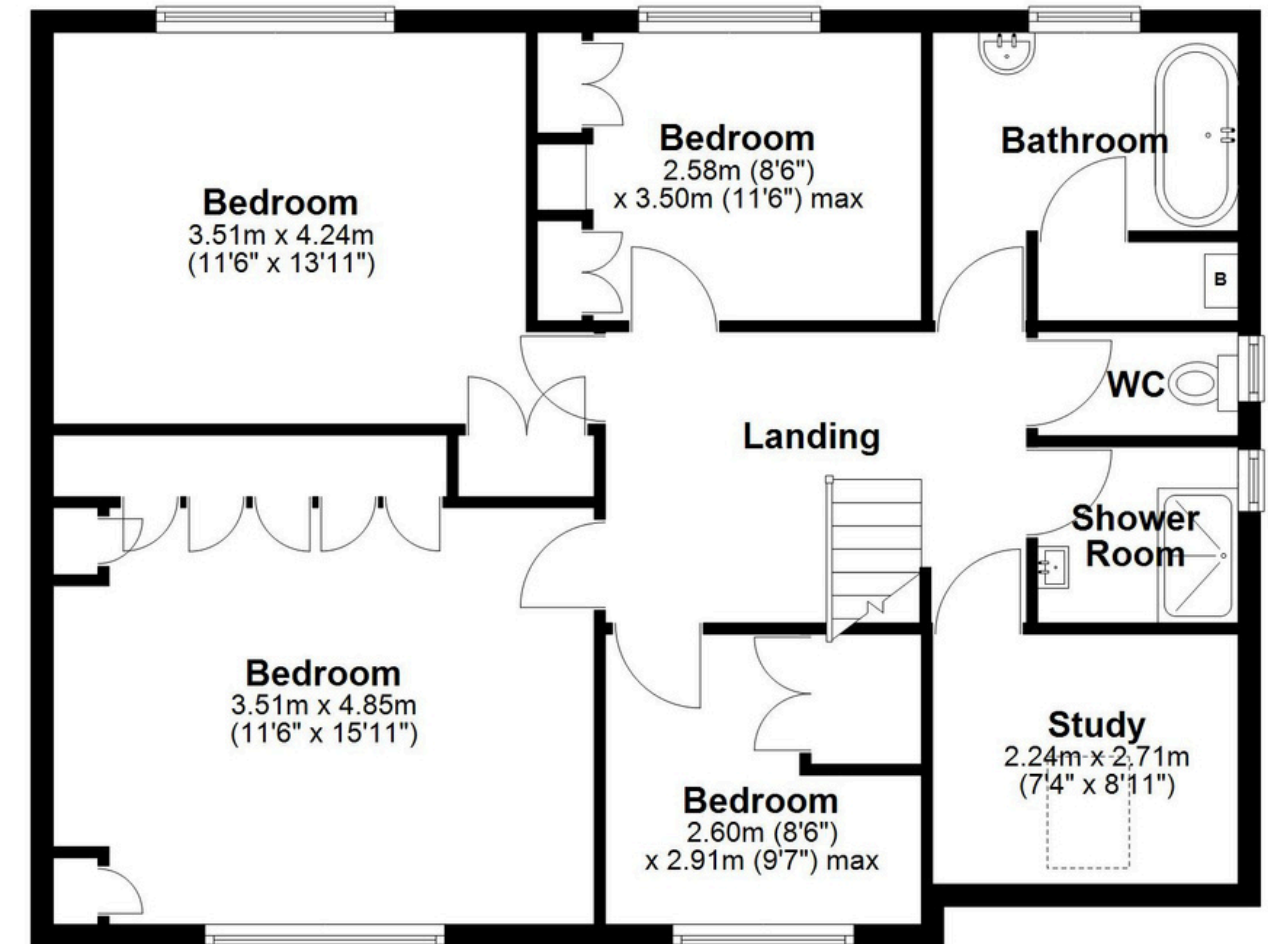
## Ground Floor

Approx. 96.7 sq. metres (1040.5 sq. feet)



## First Floor

Approx. 81.0 sq. metres (871.5 sq. feet)



Total area: approx. 177.6 sq. metres (1912.0 sq. feet)

This floor plan is for illustration purposes only, this is not intended to be a measured/scaled survey or comply with RICS guidelines. All measurements (including total floor area) openings, orientation and floor area are approximate. No details are guaranteed, they cannot be relied upon for any purpose and do not form part of any agreement. A party must rely upon its own inspection (s). No responsibility is taken for any error, omission, or mis-statement.

Plan produced using PlanUp.