

Need a Mortgage in principle
to make offers? Call us now
for quick assistance!
0121 775 0101



Do you need to sell?
Start your journey now!
Call us we can help.
0121 775 0101



SCAN FOR MORE INFO
SIZE - 1470 Sq Ft
TENURE - Freehold
COUNCIL TAX - Solihull Metropolitan Borough Council - E
BROADBAND - Upload Max 1000Mbps
Download Max 1800Mbps
MOBILE - EE
EPC - 70 - C
PARKING - For at least 2 Cars
FLOODRISK - Very Low
SERVICES - Mains
COVENANTS - N/A

Are you an investor
interested in expanding your
portfolio?

**Call 0121 775 0101 to provide your
investment criteria for alerts.**

19 CHELVESTON CRESCENT

Solihull, B91 3YB
Offers in the Region of £625,000

This immaculate detached house, offers a perfect blend of modern living and classic charm. It is situated in a popular area, making it an excellent choice for families seeking comfort and convenience in Solihull. With its tasteful presentation and thoughtful design, this property is sure to impress.

FEATURES

- An Immaculately Presented Detached Family Home
- Bright Lounge with Bay Window to Front
- Snug/Dining Room with Bi-Fold Doors
- Stunning Extended Kitchen/Family/Dining Room with Bi-Fold Doors
- Principal Bedroom with Fitted Wardrobes and Re-Fitted En-Suite
- Three Further Bedrooms
- Modern Shower Room
- Private Landscaped Rear Garden
- Driveway Parking & Single Garage
- Tudor Grange Academy Catchment Area



**SCAN TO VIEW OUR
WEEKLY FILMS &
SUBSCRIBE**

Sneak Peeks

Every week, we unveil "Sneak Peeks," a feature showcasing exclusive properties before they hit Rightmove and other platforms.

The Landlord Club

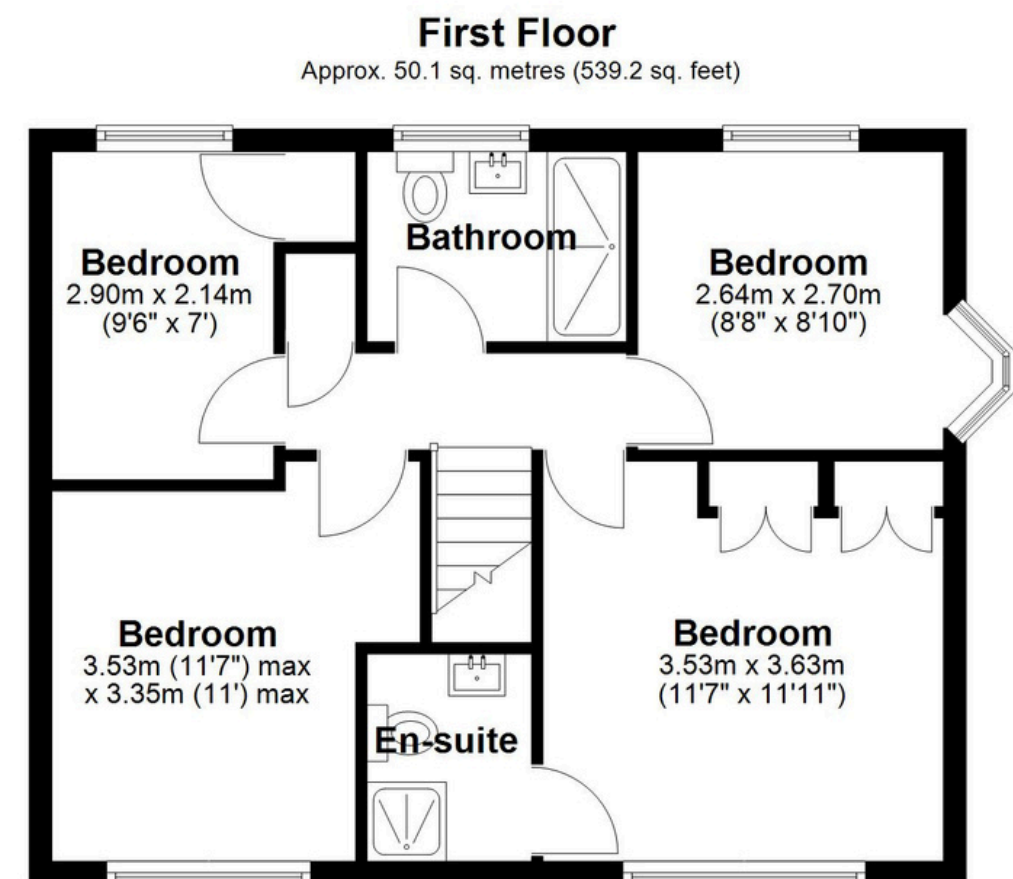
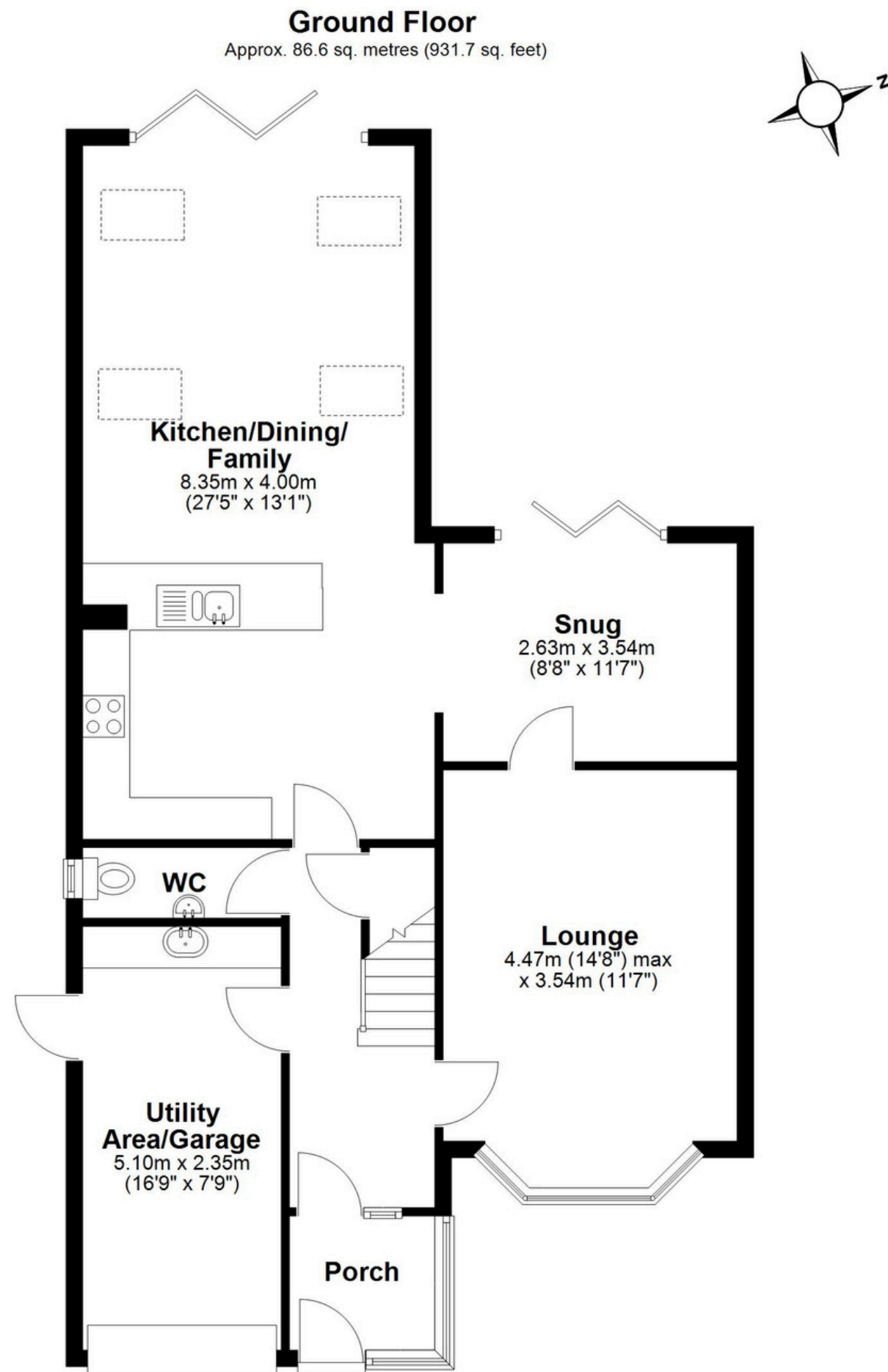
Join our Landlord Club for weekly updates on legislation, market trends, and our Letting Director's 'Investment Pick of the Week' for optimal ROI.

HTSPMD

Tune into 'How's The Solihull Property Market Dom' weekly for a quick, insightful snapshot of the market.

The Mortgage Update

Get weekly insights and the best deals with our Mortgage Update, your shortcut to navigating the complex mortgage landscape confidently.



Total area: approx. 136.6 sq. metres (1470.9 sq. feet)

This floor plan is for illustration purposes only, this is not intended to be a measured/scaled survey or comply with RICS guidelines. All measurements (including total floor area) openings, orientation and floor area are approximate. No details are guaranteed, they cannot be relied upon for any purpose and do not form part of any agreement. A party must rely upon its own inspection(s). No responsibility is taken for any error, omission, or mis-statement.

Plan produced using PlanUp.