

Need a Mortgage in principle  
to make offers? Call us now  
for quick assistance!  
**0121 775 0101**



Do you need to sell?  
Start your journey now!  
Call us we can help.  
**0121 775 0101**



**SCAN FOR MORE INFO**  
**SIZE** - 1065 Sq Ft  
**TENURE** - Freehold  
**COUNCIL TAX** - Solihull Metropolitan Borough Council - C  
**BROADBAND** - Upload Max 1000Mbps  
Download Max 1800Mbps  
**EPC** - D - 61  
**PARKING** - For at least 1 Car  
**FLOODRISK** - Very Low  
**SERVICES** - Mains  
**COVENANTS** - N/A

**213 Ulverley Green Road**  
**Solihull, B92 8AB**  
**Offers in the Excess of £385,000**

A delightful semi-detached house, built in 1926, offers a perfect blend of traditional character and modern potential. This property presents a wonderful opportunity to create your dream home in a sought-after location, with the potential to extend (subject to planning permission).

**FEATURES**

- Semi-Detached Family Home with Potential to Extend (STPP)
- Front Dining Room with Bay Window
- Lounge with French Doors to Garden
- Kitchen with Large Utility Area
- Principal Double Bedroom
- Good Sized Second Double Bedroom
- Third Single Bedroom/Nursery/Home Office
- Shower Room
- Large Private Rear Garden
- Driveway Parking
- Convenient Location

Are you an investor  
interested in expanding your  
portfolio?

**Call 0121 775 0101 to provide your  
investment criteria for alerts.**



SCAN TO **VIEW OUR**  
**WEEKLY FILMS &**  
**SUBSCRIBE**

**Sneak Peeks**

Every week, we unveil "Sneak Peeks," a feature showcasing exclusive properties before they hit Rightmove and other platforms.

**The Landlord Club**

Join our Landlord Club for weekly updates on legislation, market trends, and our Letting Director's 'Investment Pick of the Week' for optimal ROI.

**HTSPMD**

Tune into 'How's The Solihull Property Market Dom' weekly for a quick, insightful snapshot of the market.

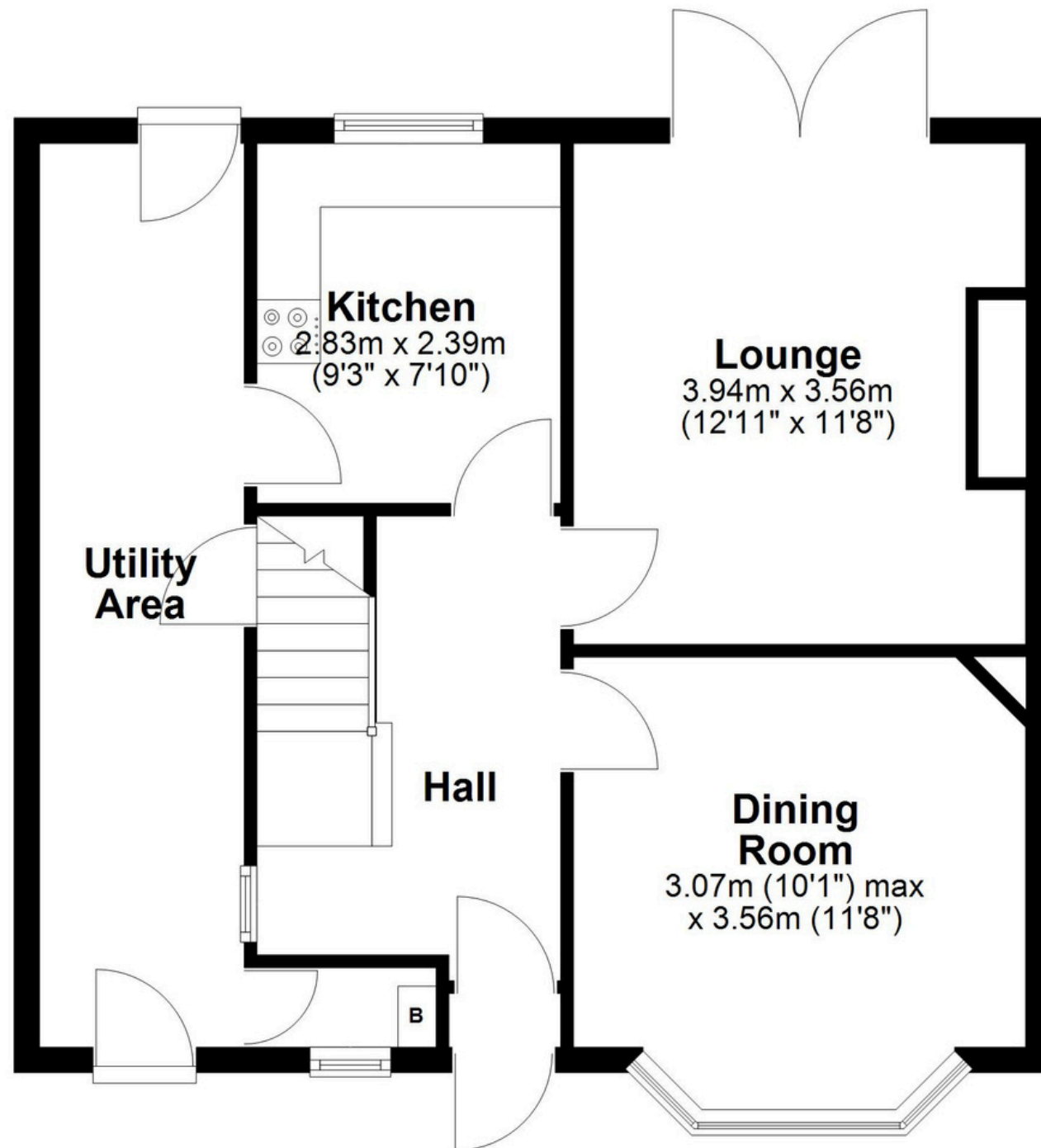
**The Mortgage Update**

Get weekly insights and the best deals with our Mortgage Update, your shortcut to navigating the complex mortgage landscape confidently.



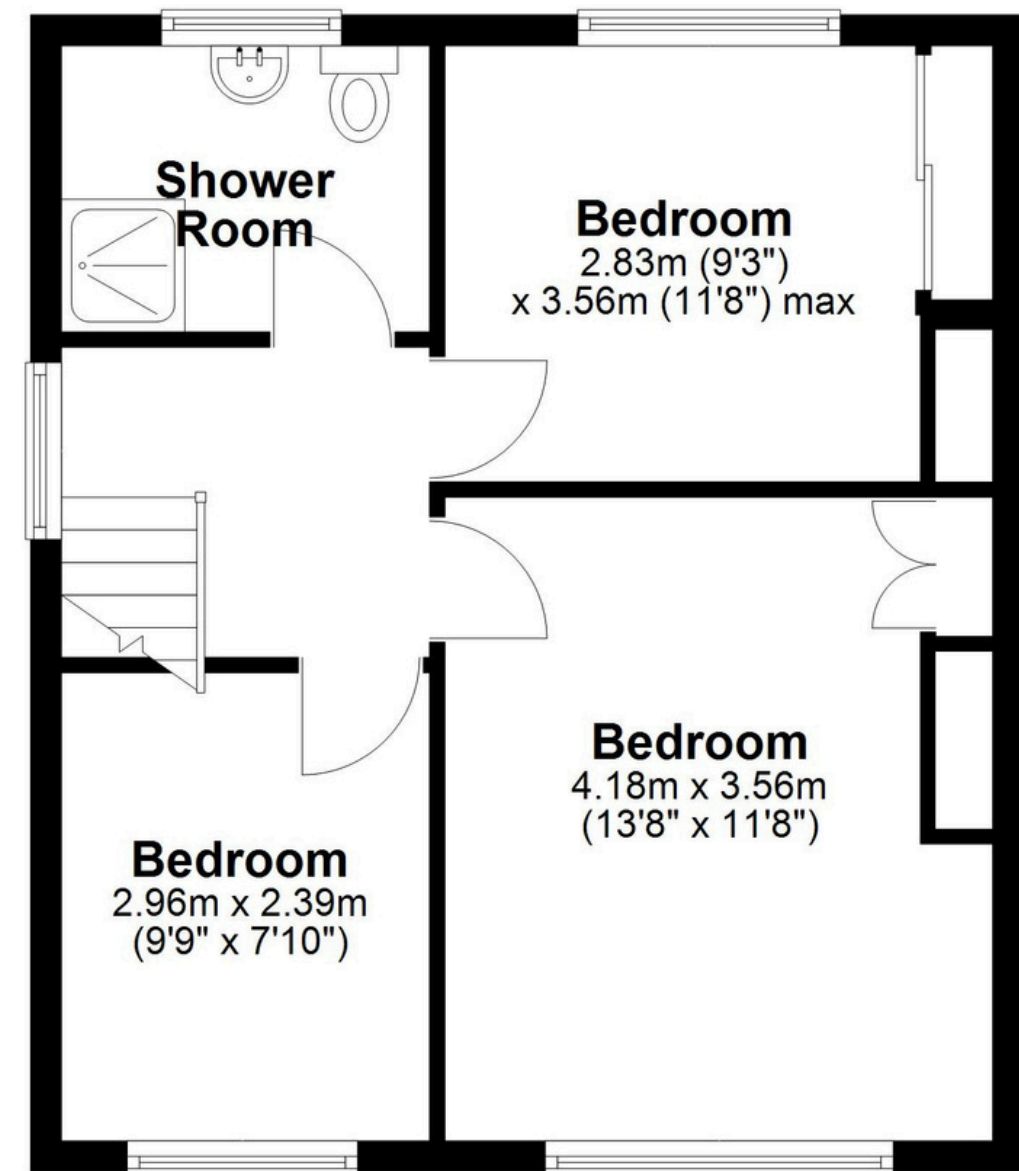
## Ground Floor

Approx. 56.2 sq. metres (604.6 sq. feet)



## First Floor

Approx. 42.8 sq. metres (460.5 sq. feet)



Total area: approx. 98.9 sq. metres (1065.0 sq. feet)

This floor plan is for illustration purposes only, this is not intended to be a measured/scaled survey or comply with RICS guidelines. All measurements (including total floor area) openings, orientation and floor area are approximate. No details are guaranteed, they cannot be relied upon for any purpose and do not form part of any agreement. A party must rely upon its own inspection(s). No responsibility is taken for any error, omission, or mis-statement.  
Plan produced using PlanUp.