

Need a Mortgage in principle  
to make offers? Call us now  
for quick assistance!  
**0121 775 0101**



Do you need to sell?  
Start your journey now!  
Call us we can help.  
**0121 775 0101**



**SCAN FOR MORE INFO**  
**SIZE** - 1072 Sq Ft  
**TENURE** - Leasehold with 997 years remaining  
**SERVICE CHARGE** - £3,632.00  
**COUNCIL TAX** - Solihull Metropolitan Borough Council - F  
**BROADBAND** - Upload Max 1000Mbps  
Download Max 1000Mbps  
**MOBILE** - O2 Vodafone  
**EPC** - C - 70  
**PARKING** - 2 Allocated Secure Parking Spaces  
**FLOODRISK** - Very Low  
**SERVICES** - Mains  
**COVENANTS** - N/A

**Apartment 179 Broadoaks**  
**548 Streetsbrook Road, Solihull, B91 1US**  
**Offers in the region of £500,000**

Situated in the heart of Solihull, this exquisite penthouse apartment presents a remarkable opportunity for those seeking a stylish and contemporary living space. This property is tastefully presented and boasts stunning skyline views that enhance its appeal.

**FEATURES**

- Stunning Penthouse Apartment
- Central Solihull Location
- Open Plan Living./Dining Kitchen
- Spacious Balcony
- Principal Bedroom with En-Suite Shower Room
- Second Double Bedroom & Third Good Sized Single
- Modern Bathroom
- Two Secure Allocated Parking Spaces
- Lift Access to Apartment
- Fabulous Location

Are you an investor  
interested in expanding your  
portfolio?

**Call 0121 775 0101 to provide your investment criteria for alerts.**



SCAN TO **VIEW OUR**  
**WEEKLY FILMS &**  
**SUBSCRIBE**

**Sneak Peeks**

Every week, we unveil "Sneak Peeks," a feature showcasing exclusive properties before they hit Rightmove and other platforms.

**The Landlord Club**

Join our Landlord Club for weekly updates on legislation, market trends, and our Letting Director's 'Investment Pick of the Week' for optimal ROI.

**HTSPMD**

Tune into 'How's The Solihull Property Market Dom' weekly for a quick, insightful snapshot of the market.

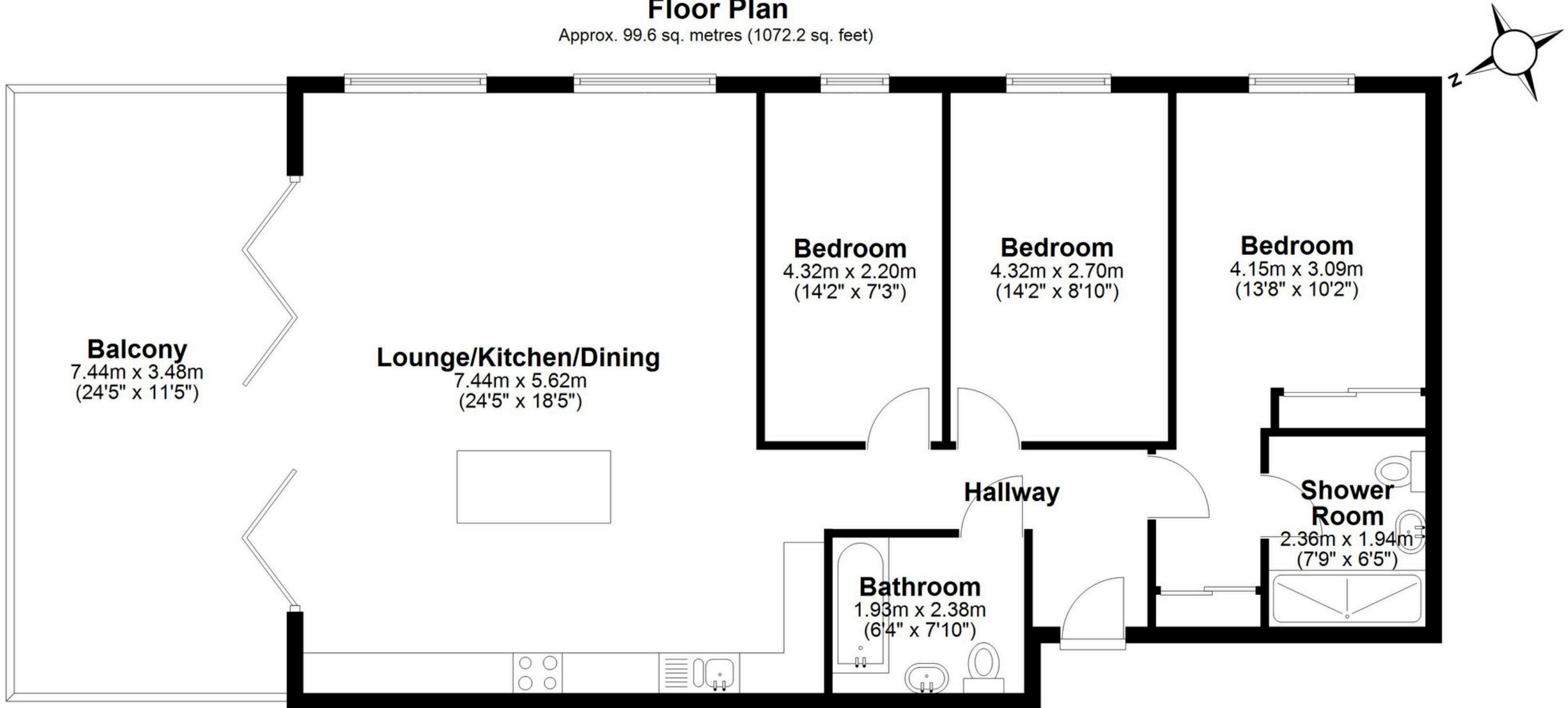
**The Mortgage Update**

Get weekly insights and the best deals with our Mortgage Update, your shortcut to navigating the complex mortgage landscape confidently.



## Floor Plan

Approx. 99.6 sq. metres (1072.2 sq. feet)



Total area: approx. 99.6 sq. metres (1072.2 sq. feet)

This floor plan is for illustration purposes only, this is not intended to be a measured/scaled survey or comply with RICS guidelines. All measurements (including total floor area) openings, orientation and floor area are approximate. No details are guaranteed, they cannot be relied upon for any purpose and do not form part of any agreement. A party must rely upon its own inspection(s). No responsibility is taken for any error, omission, or mis-statement.

Plan produced using PlanUp.