

Need a Mortgage in principle
to make offers? Call us now
for quick assistance!
0121 775 0101



Do you need to sell?
Start your journey now!
Call us we can help.
01564 777 314



SCAN FOR MORE INFO
SIZE - 1216 Sq Ft
TENURE - Freehold
COUNCIL TAX - Solihull Metropolitan Borough Council - F
BROADBAND - Upload Max 1000Mbps
Download Max 1800Mbps
MOBILE - EE O2 Vodafone
EPC - C 68
PARKING - For 2 Cars
FLOODRISK - Very Low
SERVICES - Mains
COVENANTS - N/A

Are you an investor
interested in expanding your
portfolio?

**Call 01564 777 314 to provide your
investment criteria for alerts.**

2 Glendon Way Dorridge, B93 8SY

This charming detached family home on Glendon Way offers a perfect blend of space and comfort. Spanning an impressive 1,216 square feet, the property is neutrally decorated throughout, making it an ideal canvas for your personal touch. With no upward chain, you can move in with ease and start enjoying your new home right away.

FEATURES

- Well Presented Detached Family Home with No Upward Chain
- Lounge Leading Through to the Kitchen/Diner
- Second Reception Room
- Utility & Guest W/C
- Principal Bedroom with En-Suite Bathroom
- Three Further Good Sized Bedrooms
- Family Shower Room
- Driveway to Accommodate Two Cars
- Private Rear Garden
- Walking Distance to Dorridge Village & Train Station



SCAN TO **VIEW OUR
WEEKLY FILMS &
SUBSCRIBE**

Sneak Peeks

Every week, we unveil "Sneak Peeks," a feature showcasing exclusive properties before they hit Rightmove and other platforms.

The Landlord Club

Join our Landlord Club for weekly updates on legislation, market trends, and our Letting Director's 'Investment Pick of the Week' for optimal ROI.

HTSPMD

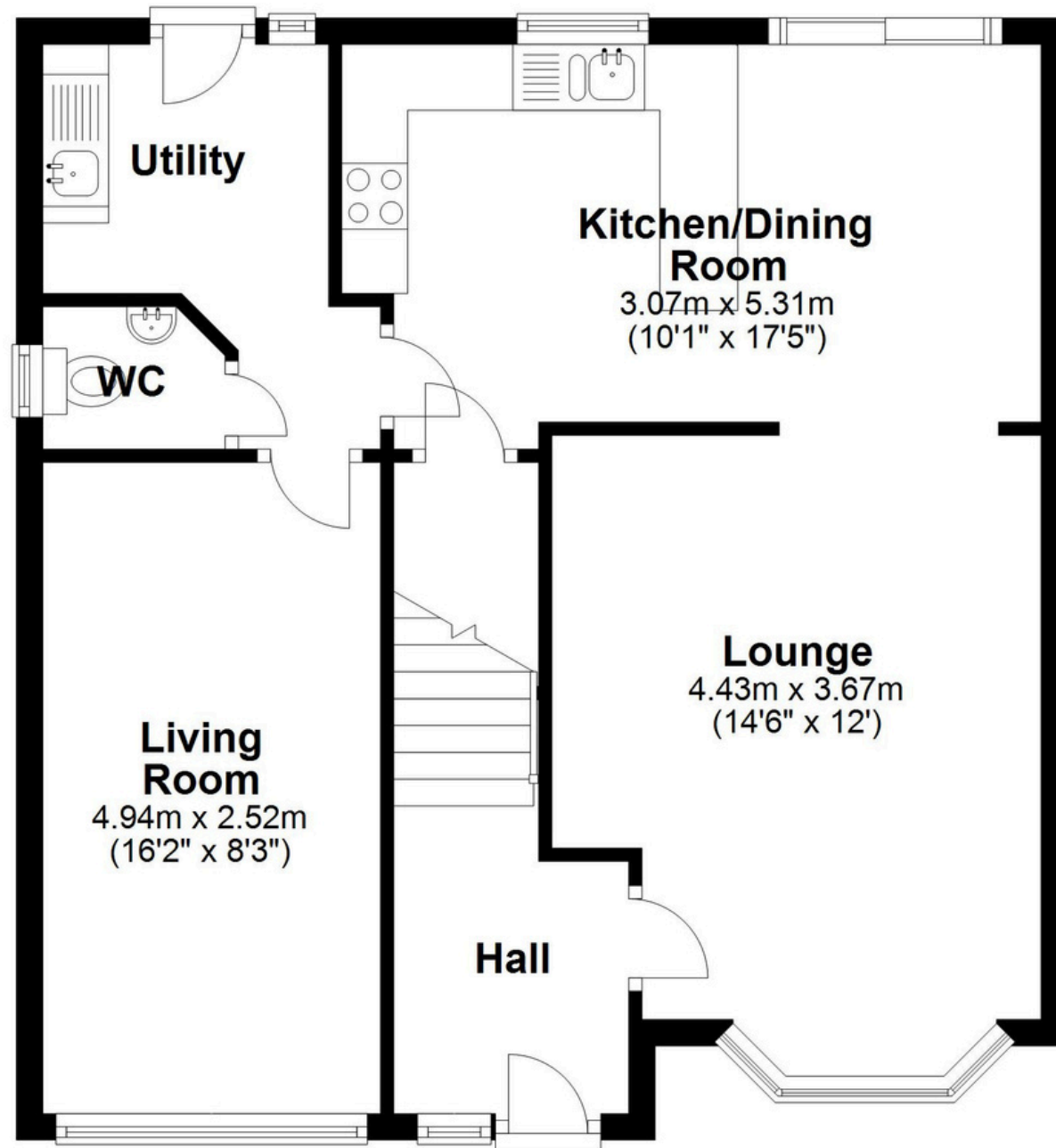
Tune into 'How's The Solihull Property Market Dom' weekly for a quick, insightful snapshot of the market.

The Mortgage Update

Get weekly insights and the best deals with our Mortgage Update, your shortcut to navigating the complex mortgage landscape confidently.

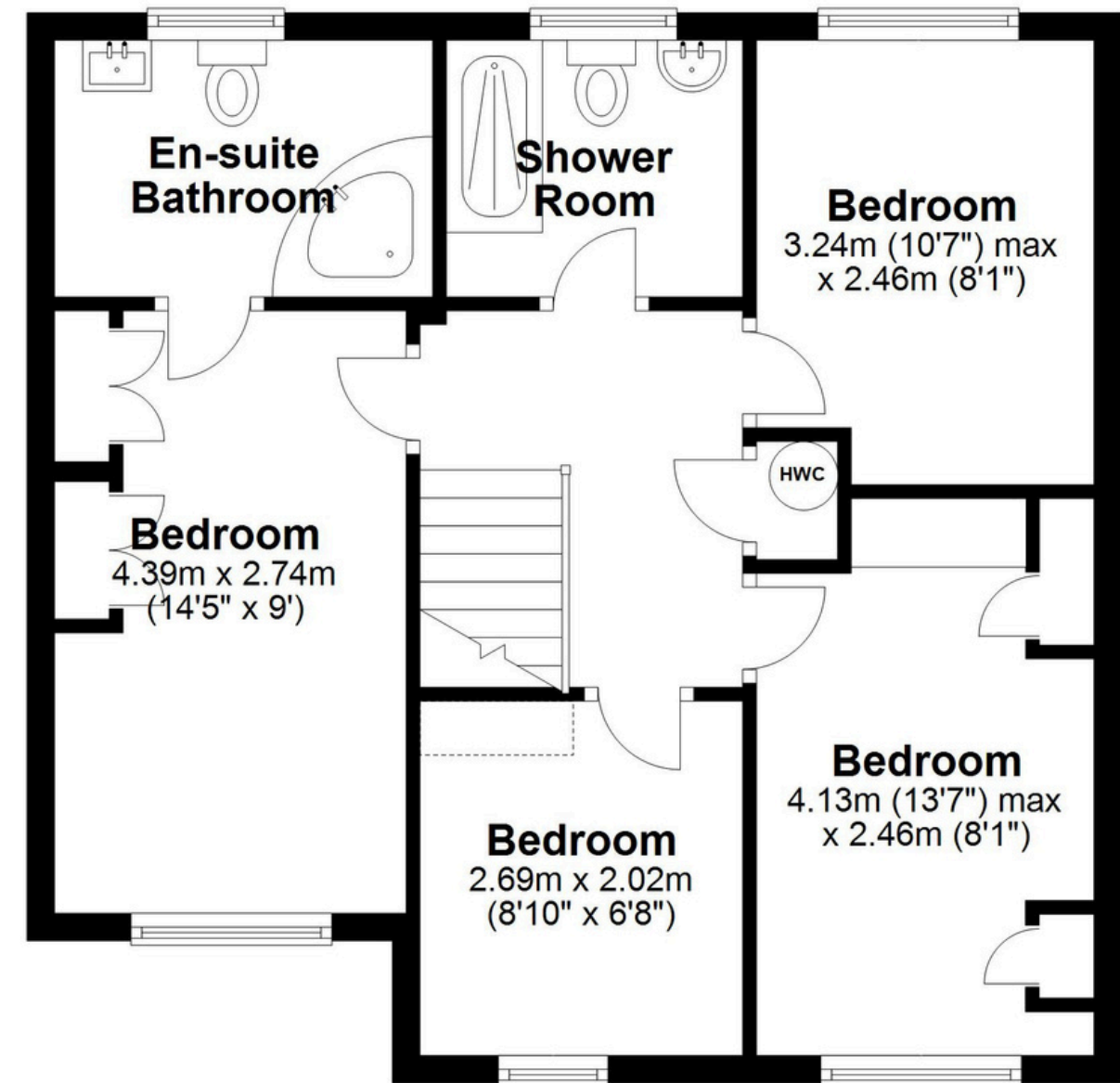
Ground Floor

Approx. 59.1 sq. metres (636.3 sq. feet)



First Floor

Approx. 53.9 sq. metres (579.8 sq. feet)



Total area: approx. 113.0 sq. metres (1216.1 sq. feet)

This floor plan is for illustration purposes only, this is not intended to be a measured/scaled survey or comply with RICS guidelines. All measurements (including total floor area) openings, orientation and floor area are approximate. No details are guaranteed, they cannot be relied upon for any purpose and do not form part of any agreement. A party must rely upon its own inspection(s). No responsibility is taken for any error, omission, or mis-statement.
Plan produced using PlanUp.