

Need a Mortgage in principle
to make offers? Call us now
for quick assistance!
0121 775 0101



Do you need to sell?
Start your journey now!
Call us we can help.
0121 775 0101



38 Buryfield Road
Solihull, B91 2DG
Offers in the Region of £750,000

SCAN FOR MORE INFO
SIZE - 2105 Sq Ft
TENURE - Freehold
COUNCIL TAX - Solihull Metropolitan Borough Council - F
BROADBAND - Upload Max 1000Mbps
Download Max 1800Mbps
MOBILE - O2
EPC - D - 68
PARKING - For Numerous Cars
FLOODRISK - Very Low
SERVICES - Mains
COVENANTS - N/A

Situated on Buryfield Road, this beautifully presented detached house, built in 1952, offers a perfect blend of modern living and classic elegance. With five spacious bedrooms and three well-appointed bathrooms, this property is ideal for families seeking comfort and convenience. With parking available for up to five vehicles, this property is not only spacious but also exceptionally practical.

FEATURES

- Spacious Detached Family Home
- Lounge with Separate Dining Room
- Stunning Open Plan Breakfast Kitchen with Bi-Fold Doors
- Large Utility Room
- Principal Bedroom with Fitted Wardrobes & En-Suite
- Second Bedroom with En-Suite
- Three Further Double Bedrooms
- Family Bathroom
- Private Mature Rear Garden
- Ample Driveway Parking

Are you an investor
interested in expanding your
portfolio?

Call 0121 775 0101 to provide your investment criteria for alerts.



SCAN TO **VIEW OUR**
WEEKLY FILMS &
SUBSCRIBE

Sneak Peeks

Every week, we unveil "Sneak Peeks," a feature showcasing exclusive properties before they hit Rightmove and other platforms.

The Landlord Club

Join our Landlord Club for weekly updates on legislation, market trends, and our Letting Director's 'Investment Pick of the Week' for optimal ROI.

HTSPMD

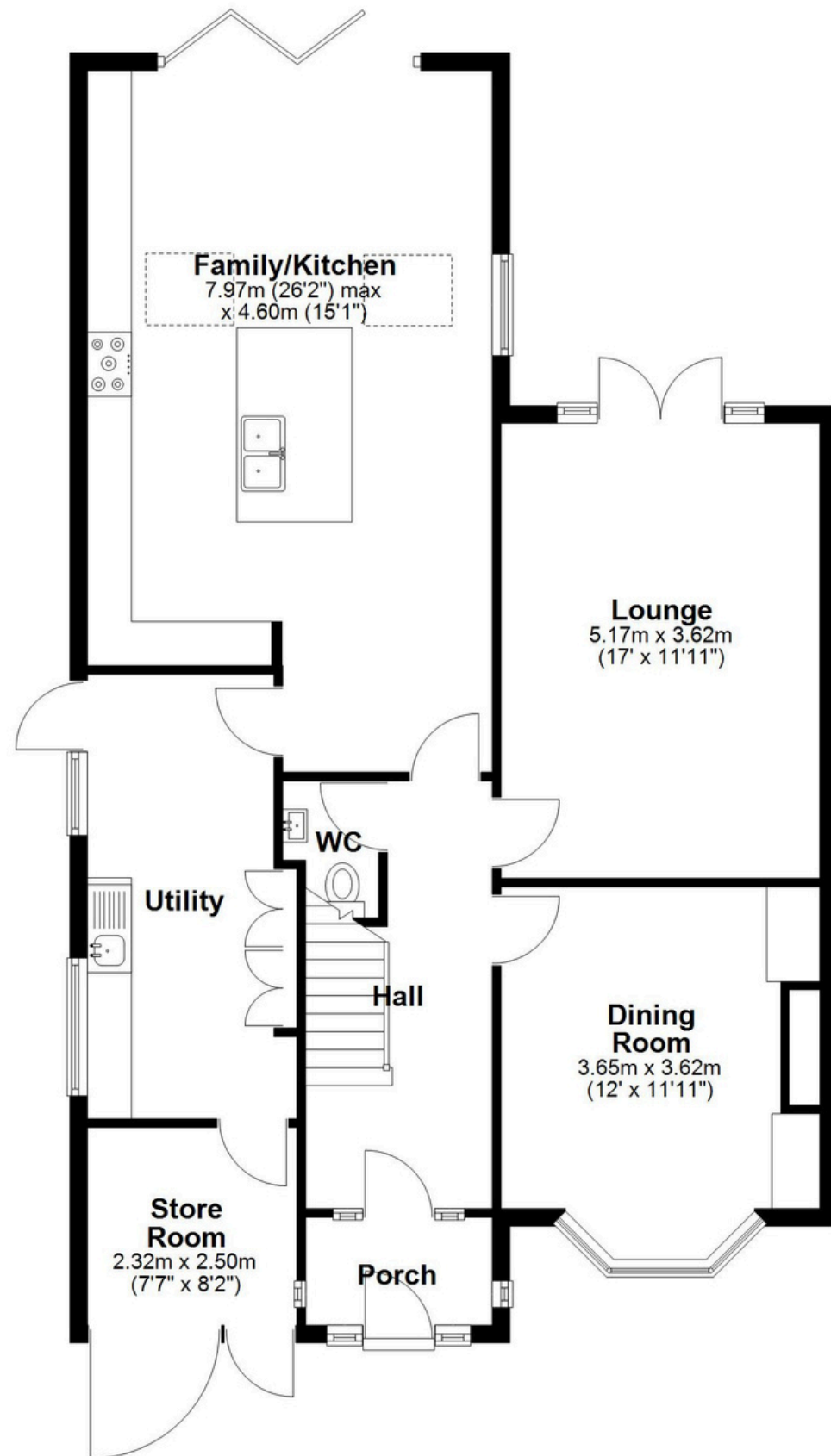
Tune into 'How's The Solihull Property Market Dom' weekly for a quick, insightful snapshot of the market.

The Mortgage Update

Get weekly insights and the best deals with our Mortgage Update, your shortcut to navigating the complex mortgage landscape confidently.

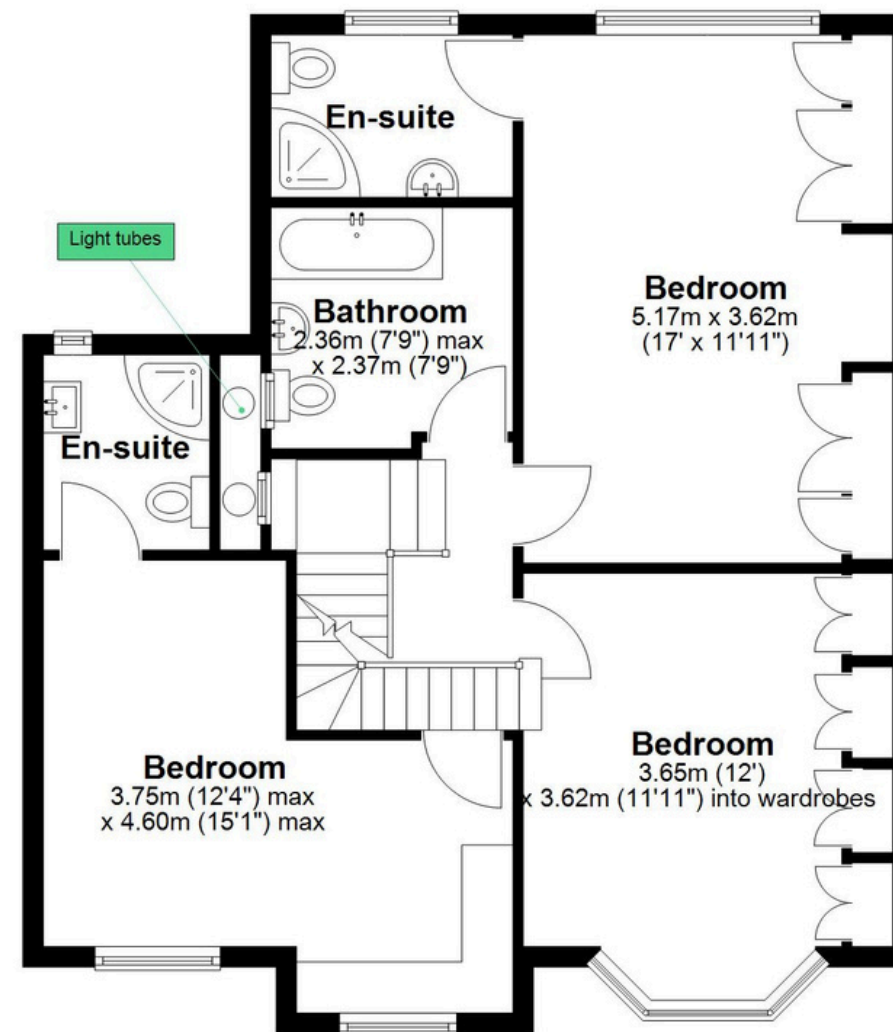
Ground Floor

Approx. 99.5 sq. metres (1070.9 sq. feet)



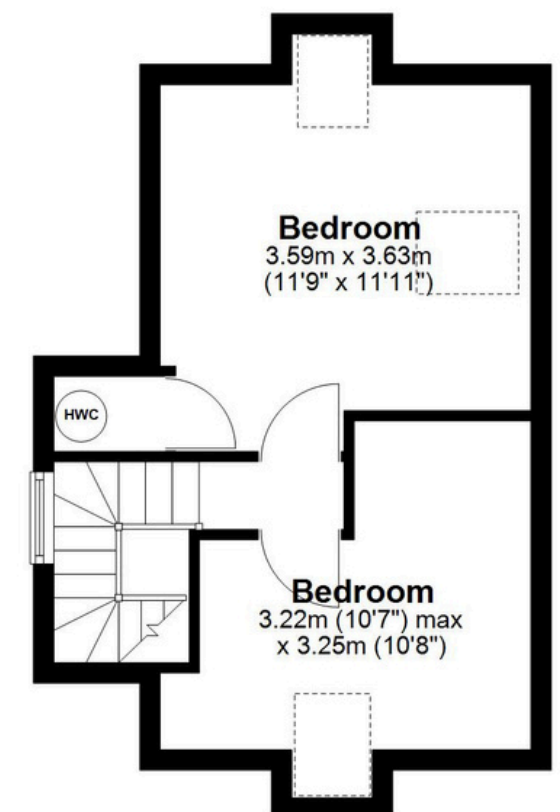
First Floor

Approx. 68.8 sq. metres (740.6 sq. feet)



Second Floor

Approx. 27.3 sq. metres (294.0 sq. feet)



Total area: approx. 195.6 sq. metres (2105.5 sq. feet)

This floor plan is for illustration purposes only, this is not intended to be a measured/scaled survey or comply with RICS guidelines. All measurements (including total floor area) openings, orientation and floor area are approximate. No details are guaranteed, they cannot be relied upon for any purpose and do not form part of any agreement. A party must rely upon its own inspection(s). No responsibility is taken for any error, omission, or mis-statement.
Plan produced using PlanUp.