

Need a Mortgage in principle
to make offers? Call us now
for quick assistance!
0121 775 0101



Do you need to sell?
Start your journey now!
Call us we can help.
01564 777 314



SCAN FOR MORE INFO
SIZE - 1187 Sq Ft
TENURE - Freehold
COUNCIL TAX - Solihull Metropolitan Borough Council - C
BROADBAND - Upload Max 1000Mbps
Download Max 1000Mbps
MOBILE - EE Three O2 Vodafone
EPC - D - 66
PARKING - Driveway for up to 3 Vehicles
FLOODRISK - Very Low
SERVICES - Mains
COVENANTS - N/A

Are you an investor
interested in expanding your
portfolio?

**Call 01564 777 314 to provide your
investment criteria for alerts.**

43 Newlands Road

Bentley Heath, B93 8AU
Offers Over £450,000

Situated on Newlands Road, this impressive end-terrace house offers a delightful blend of space and modern living. In summary, this elegant house on is an ideal family home, combining modern amenities with generous living accommodation and a beautiful garden. It is a must-see for anyone looking to settle in the desirable Bentley Heath area.

FEATURES

- Spacious End Terraced Family Home
- Bright Living Room
- Breakfast Kitchen
- Large Utility Room with WC & Conservatory
- Two Double Bedrooms
- Generous Sized Third Single Bedroom
- Modern Four Piece Family Bathroom
- South Facing Rear Garden
- Driveway Parking
- EC Charging Point
- Convenient Location



SCAN TO **VIEW OUR**
WEEKLY FILMS &
SUBSCRIBE

Sneak Peeks

Every week, we unveil "Sneak Peeks," a feature showcasing exclusive properties before they hit Rightmove and other platforms.

The Landlord Club

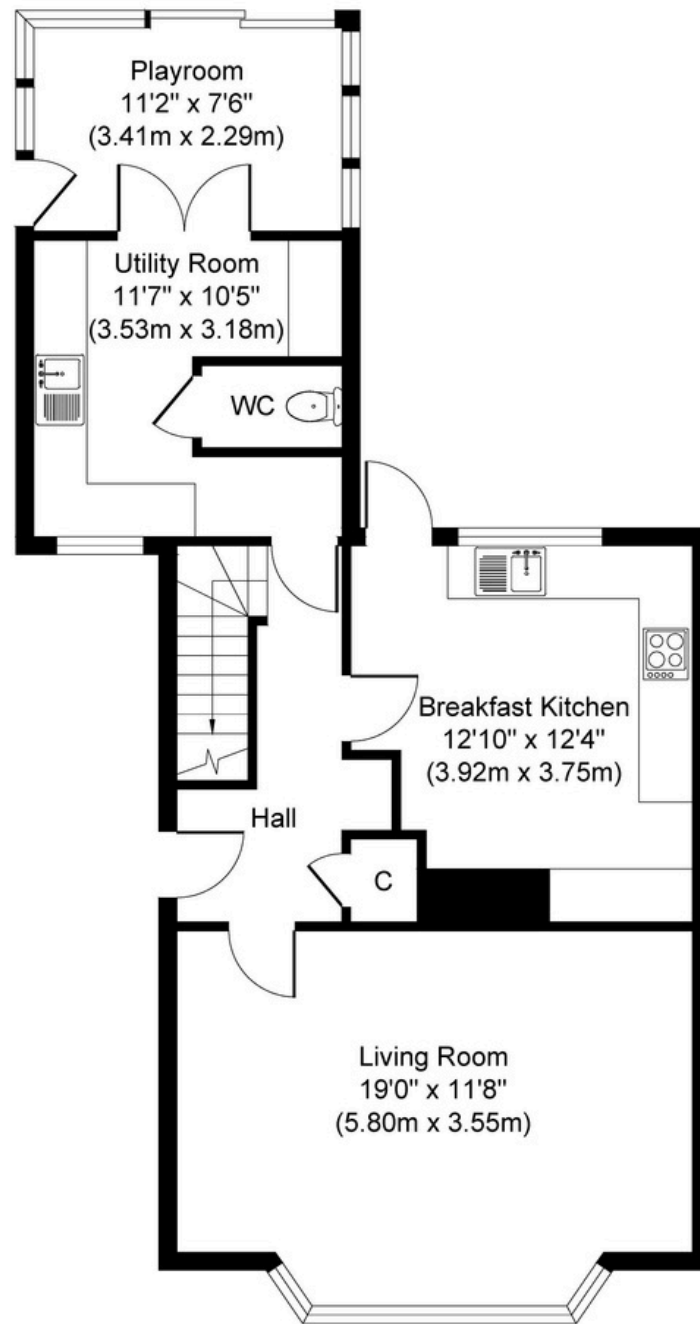
Join our Landlord Club for weekly updates on legislation, market trends, and our Letting Director's 'Investment Pick of the Week' for optimal ROI.

HTSPMD

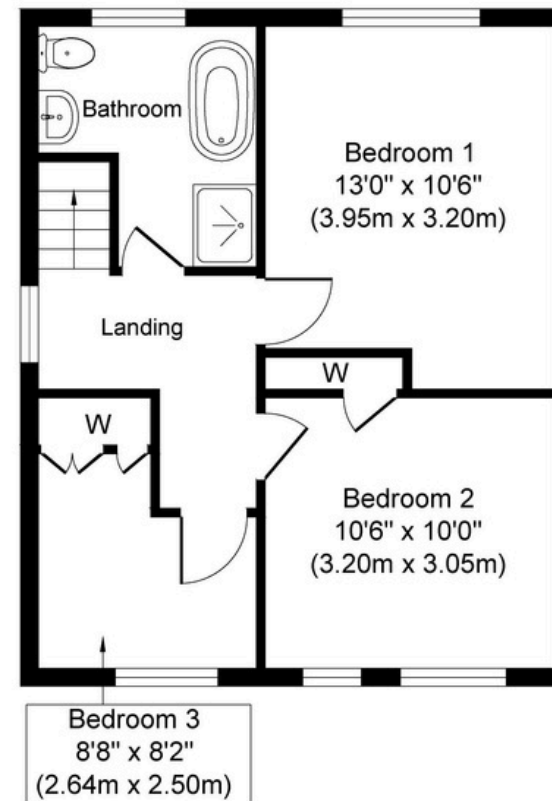
Tune into 'How's The Solihull Property Market Dom' weekly for a quick, insightful snapshot of the market.

The Mortgage Update

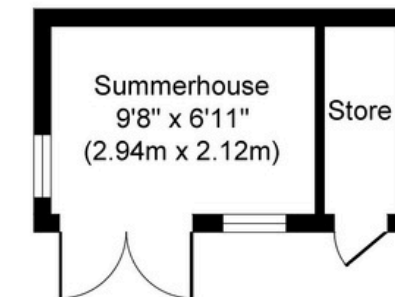
Get weekly insights and the best deals with our Mortgage Update, your shortcut to navigating the complex mortgage landscape confidently.



Ground Floor
Approximate Floor Area
735 sq. ft
(68.24 sq. m)



First Floor
Approximate Floor Area
452 sq. ft
(41.96 sq. m)



Outside
Approximate Floor Area
89 sq. ft
(8.25 sq. m)

Whilst every attempt has been made to ensure the accuracy of the floor plan contained here, measurements of doors, windows, rooms and any other items are approximate and no responsibility is taken for any error, omission, or mis-statement. The measurements should not be relied upon for valuation, transaction and/or funding purposes. This plan is for illustrative purposes only and should be used as such by any prospective purchaser or tenant.

The services, systems and appliances shown have not been tested and no guarantee as to their operability or efficiency can be given.

Copyright V360 Ltd 2025 | www.houseviz.com