



- SECLUDED MEWS LOCATION
- GARDEN WITH LAWN, PATIO & SUMMER HOUSE
- TWO ENSUITE BEDROOMS
- DETACHED FAMILY HOME
- DOUBLE GARAGE & EXTENSIVE DRIVEWAY
- 10 MIN WALK TO TOWN CENTRE



**Lillycroft, Heathfield Road**  
Maidstone, ME14 2AD

**£725,000**

## The Location

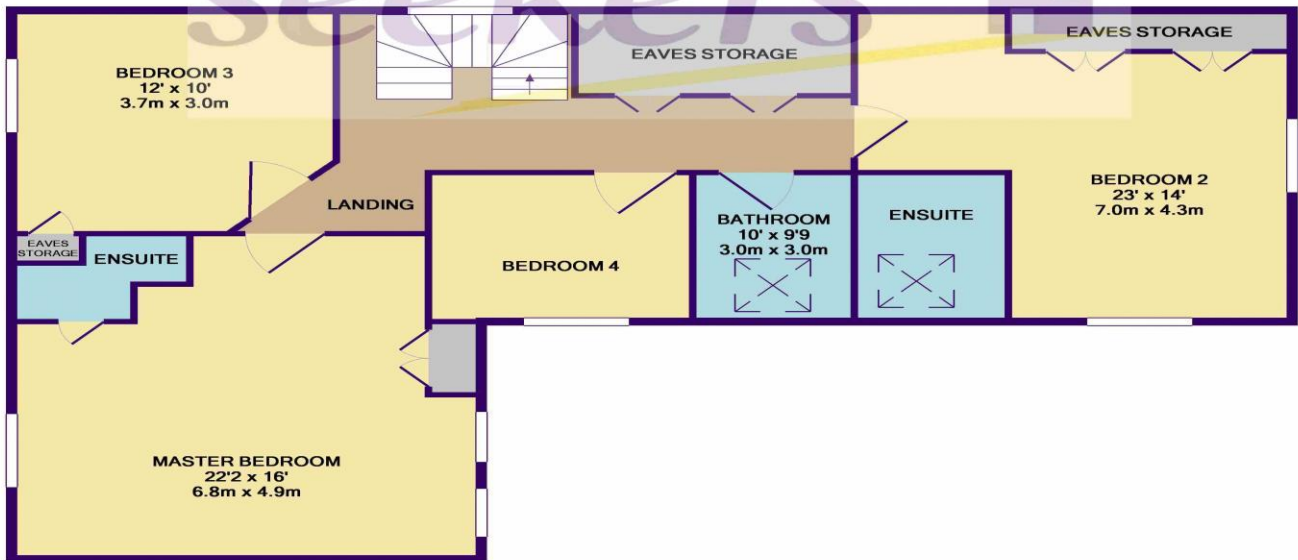
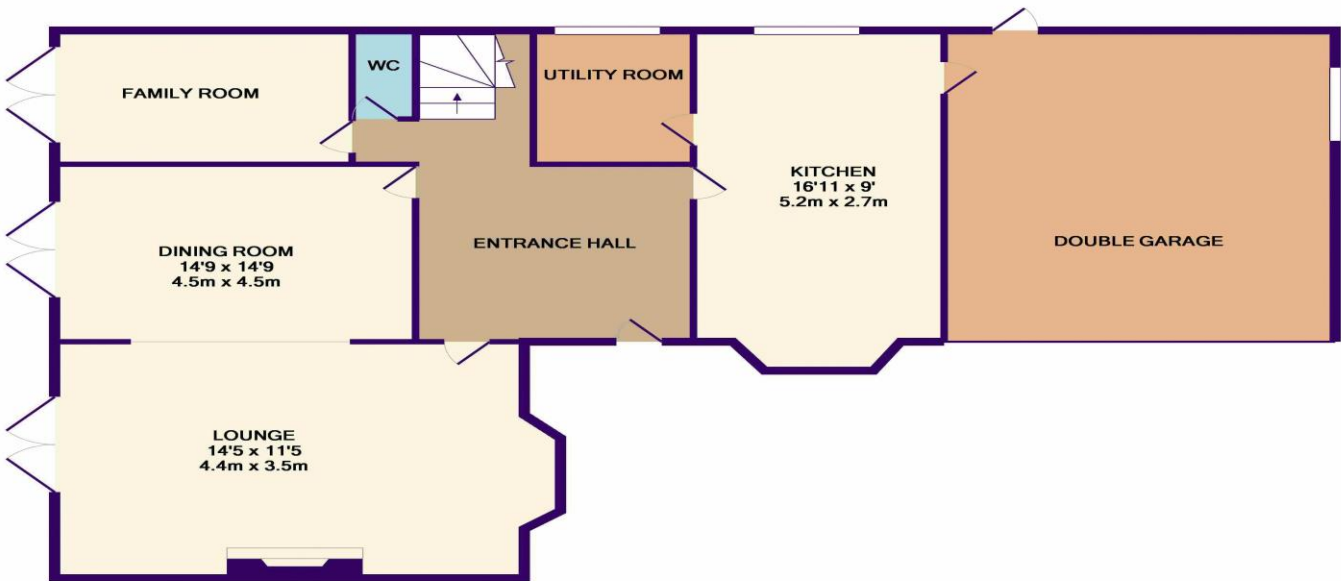
This five double bedroom detached home is situated in a secluded close off of the ever sought after Heathfield Road, Penenden Heath. Within close proximity of local schools, green areas, local amenities, popular restaurants and just a 10 minute walk into Maidstone Town Centre. The town centre offers many High street shops, The Mall shopping centre, Fremlin Walk, a selection of restaurants and bars, supermarkets, Lockmeadow Entertainment Centre and a whole lot more. Plus, the Newnham Court Shopping Village being a short stroll away. Maidstone East train station is also walking distance for those commuting outside of Maidstone and easy access to the M20 and A2 to reach those further destinations by car.

## Inside this home.

A spacious family detached home designed in an L shape with a private driveway for several cars and a double garage with electric doors. As you enter the entrance hall you have access to the kitchen, dining room, lounge, downstairs bedroom and downstairs WC. Into the large, bright lounge with patterned fitted carpet, beautiful gas fireplace feature and French doors leading to the garden. Part open plan to the lounge is the dining room with additional French doors to the garden. The fifth bedroom/study is enough space to be a single bedroom with further French doors into the garden. Across to the stylish kitchen with granite flooring and work surfaces, blue wall tiles and ample cream farmhouse style units, two sinks, Samsung American style fridge freezer, Rangemaster oven with heat plate, 6 ring hob and extractor, built in Smeg microwave, dishwasher and Miele coffee machine. From the kitchen there is a door leading to the double garage. Off the kitchen is the utility room with additional matching units and built in Smeg Washing Machine, tumble dryer plus a door for accessing the garden. On the ground level, this house benefits from a WC with wash basin. Up the central staircase to the landing with a window overlooking the garden and plenty of storage space in the eaves. Into the extensive and bright master bedroom with built in wooden units, blue fitted carpet and an ensuite shower room. Along the landing to bedroom two, again with fitted carpet, plenty of storage with built in wardrobes and an en suite shower room with a double cubicle. Bedroom three with fitted carpet and fitted wardrobes. Then onto bedroom four fitted carpets and built in storage. This bedroom is currently used as an office space. The tiled family bathroom benefits from a bath with shower.

## The Outside

To the exterior, a great sized garden with both patio and lawn areas with a large awning attached to the back of the house. In addition, a fantastic wood cabin/summer house containing electric and lighting. This is truly a stunning property with its own character and style throughout, plenty of space & storage and in a peaceful mews setting away from the road.



Whilst every attempt has been made to ensure the accuracy of the floor plan contained here, measurements of doors, windows, rooms and any other items are approximate and no responsibility is taken for any error, omission, or mis-statement. This plan is for illustrative purposes only and should be used as such by any prospective purchaser. The services, systems and appliances shown have not been tested and no guarantee as to their operability or efficiency can be given.  
Made with Metropix ©2017



