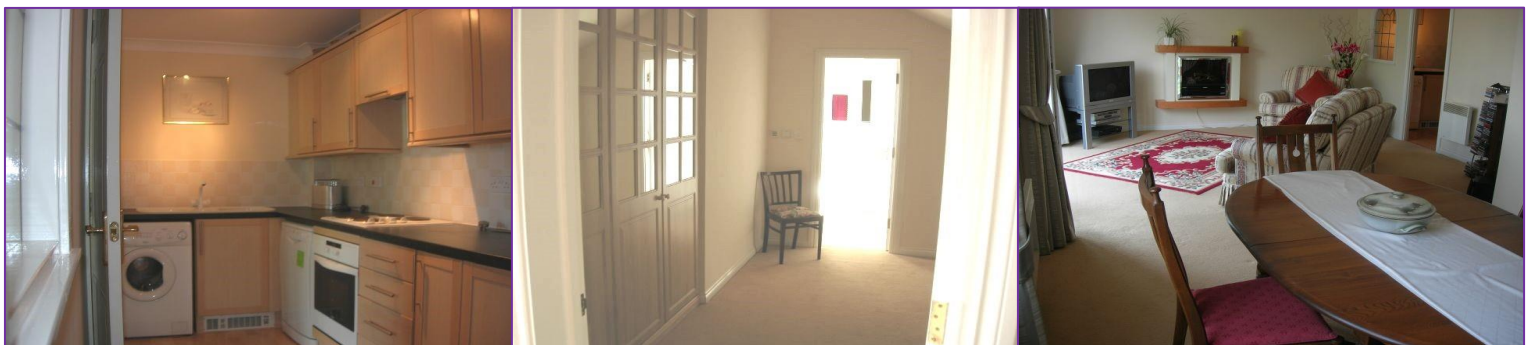




- **MUST BE SEEN!! SPACIOUS DUPLEX APARTMENT**
- **BALCONY**
- **JACUZZI BATHROOM**
- **WALK IN WARDROBE**
- **PARKING**
- **CHAIN FREE**



29, The Coachyard
Maidstone, ME16 8TT

£235,000

****A modern two bedroom spacious duplex penthouse apartment. The property features a spacious lounge/dining room with balcony and panoramic views. A kitchen with oven/hob, fridge/freezer, dish washer and washing machine. The double bedroom has a en suite. On the upper floor the bedroom has a walk in dressing room with built in wardrobes, bathroom with Jacuzzi bath and shower. There is entry phone system a lift and secure gated parking with 2 allocated spaces****

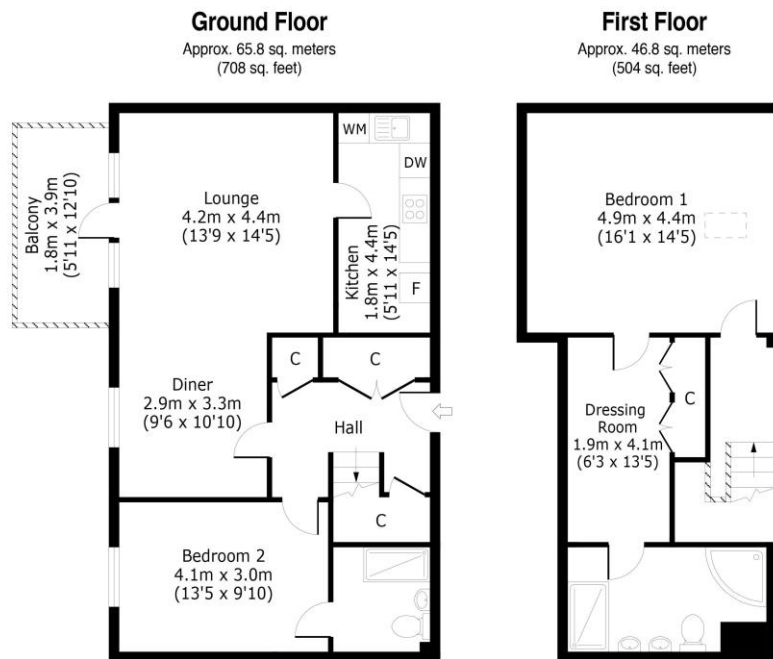
Freehold

Service Charge - £2448.52 per annum

Ground Rent - £150 per annum

The Location

Its two-shopping centre Fremlin Walk and The Mall boast more than 100 stores between them. Situated within walking distance to Maidstone Hospital and near the town centre and train station. Ideally situated for access to a number of major roads, The Coachyard promises to be popular with commuters working in the local area, London and surrounding cities. The M20, links with the M25 to the north and connects to the Channel Tunnel and Folkestone in the south. The A20 (London to Dover), A229 (Rochester to Hastings) and the A249 (Maidstone to Sheerness) are also all within easy travelling distance.



Total area: approx. 112.6 sq. meters (1212sq. feet)
For illustration purposes only - not to scale