



SARAH CLARK
PROPERTY CONSULTANTS

55 |
SHAKESPEARE AVENUE, BRISTOL, BS7 0ER

Available Now! This very well-maintained 2 double bedroom furnished apartment is based on this popular development in Horfield with excellent transport links and close to the MOD and Airbus. Would suit a small family or maximum two professional sharers or two students.

The apartment benefits from a dual aspect lounge which is spacious and bright and has a Juliet balcony and bay window. The modern kitchen is set back from the lounge and has integrated appliances. The two bedrooms are both a good size with the master having a very handy en-suite shower room. There is also a family bathroom with white suite. In the hallway two built-in cupboards provide useful storage space. The apartment comes with an allocated parking space and there is plenty of on-site parking.

This is a great apartment in a very good location.

Rent = £1550pcm
Deposit = £1788
Council Tax Band = B
EPC = C
Minimum 12 months tenancy



Features

- Available Now
- 2 Double Bedroom
- Offered Furnished
- En-suite and Family Bathroom
- Minimum 12 month tenancy
- Allocated Parking





TENURE

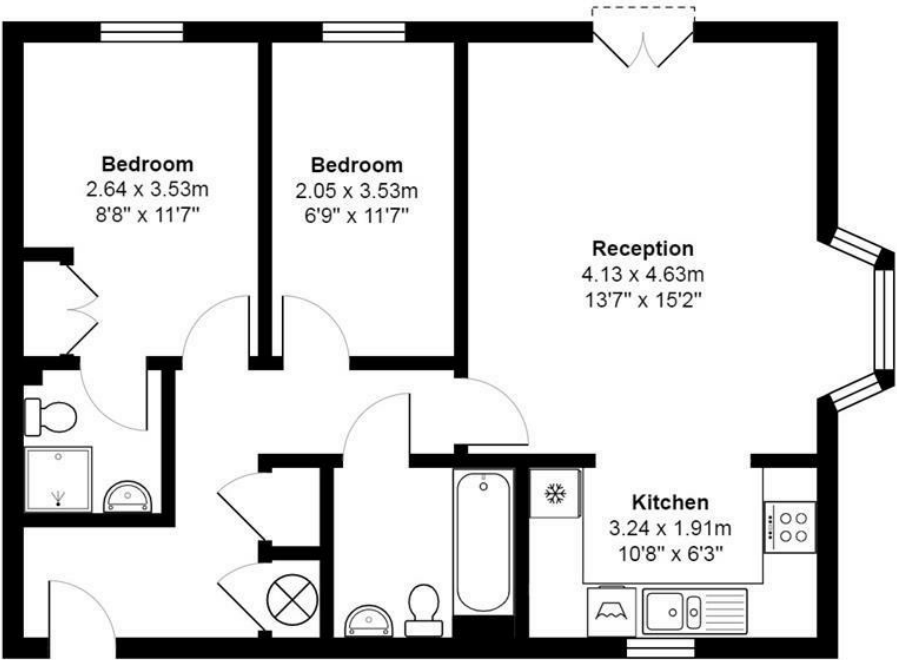
SERVICES

Customise to type text here

LOCAL AUTHORITY

Customise to type text here

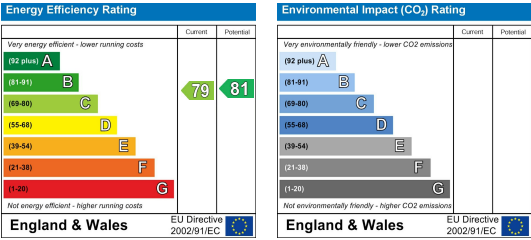
55 Shakespeare Avenue



First Floor

Total Area: 60.8 m² ... 655 ft²

All measurements of walls, doors, windows, fittings and appliances, their size and locations are approximate and cannot be regarded as being an accurate representation neither by the vendor nor their agent.
www.inovusproperty.co.uk



IMPORTANT: we would like to inform prospective purchasers that these sales particulars have been prepared as a general guide only. A detailed survey has not been carried out, nor the services, appliances and fittings tested. Room sizes should not be relied upon for furnishing purposes and are approximate. If floor plans are included, they are for guidance only and illustration purposes only and may not be to scale. If there are any important matters likely to affect your decision to buy, please contact us before viewing the property.