



SARAH CLARK  
PROPERTY CONSULTANTS

10 |  
DORIAN ROAD, BRISTOL, BS7 0XW



Available Now! Two Bedrooms | Parking | Open-plan living | Great location for Southmead Hospital and Gloucester Road | Unfurnished | Would suit single professional or professional couple

This lovely ground floor apartment has two bedrooms and an open-plan living area and is based in a great location for access to Southmead Hospital and the Gloucester Road.

The accommodation consists of a good sized open-plan lounge and kitchen. The kitchen contains integrated white goods including an electric oven, gas hob, washer/dryer and fridge/freezer. There are two bedrooms - one double with built-in wardrobe and a single bedroom. The bathroom has a modern white suite with bath with shower over, wc and basin.

There is also an allocated parking space.

Sorry no pets



## Features

- Parking
- Open-plan living
- Great for Southmead Hospital
- Close to Gloucester Road
- Unfurnished
- Would suit a single professional or couple





TENURE

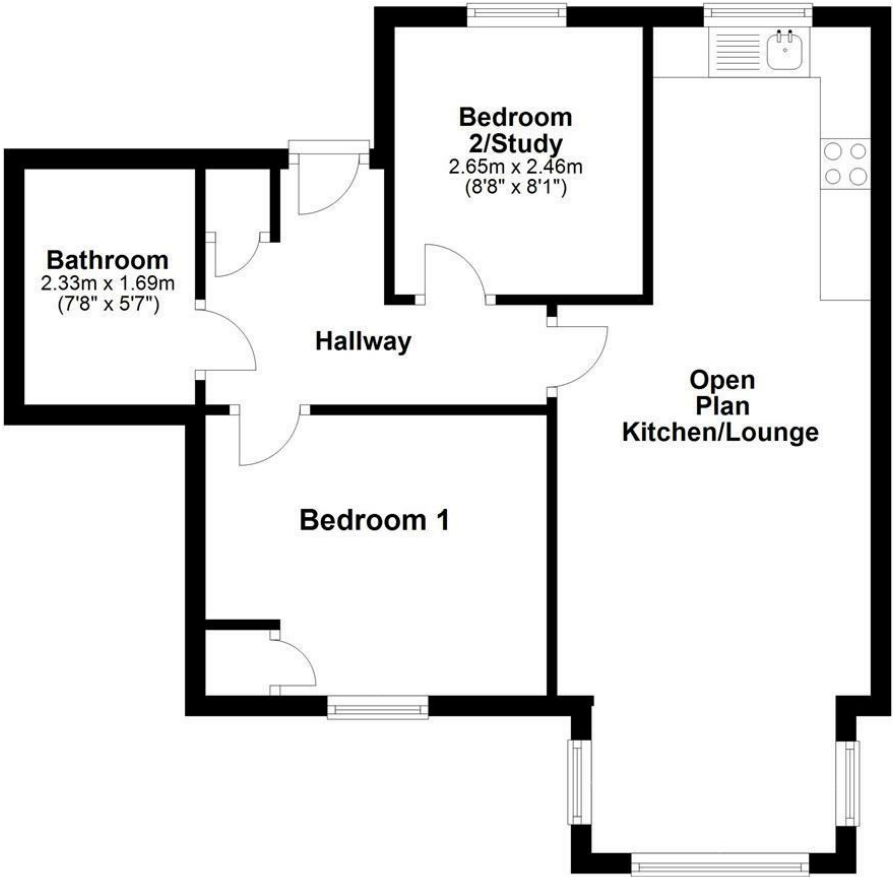
SERVICES

Customise to type text here

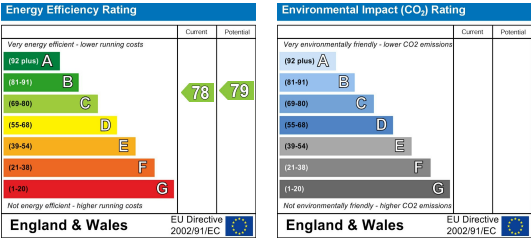
LOCAL AUTHORITY

Customise to type text here

Ground Floor



Measurements are to be used as a guide only.  
Plan produced using PlanUp.



IMPORTANT: we would like to inform prospective purchasers that these sales particulars have been prepared as a general guide only. A detailed survey has not been carried out, nor the services, appliances and fittings tested. Room sizes should not be relied upon for furnishing purposes and are approximate. If floor plans are included, they are for guidance only and illustration purposes only and may not be to scale. If there are any important matters likely to affect your decision to buy, please contact us before viewing the property.