



SARAH CLARK
PROPERTY CONSULTANTS

10 |
RIDGEWOOD, BRISTOL, BS9 1QZ

Available mid October this unfurnished apartment is suitable for a small family, professional couple or professional sharers and is set in a peaceful development in Sneyd Park. The apartment has stunning views over the estuary towards Leigh Woods and in the distance views of the Avonmouth port.

This large apartment has flexible accommodation with two double bedrooms both with built in wardrobes and stunning views of Leigh woods.

The property has a large lounge diner which has doors leading to a private balcony where you can enjoy the splendid views and the sunset of an evening.

The kitchen is well equipped with a range of wall and base units, electric oven and grill, electric hob, washing machine, dishwasher and fridge freezer. The bathroom includes a bath with shower over, basin and w/c.

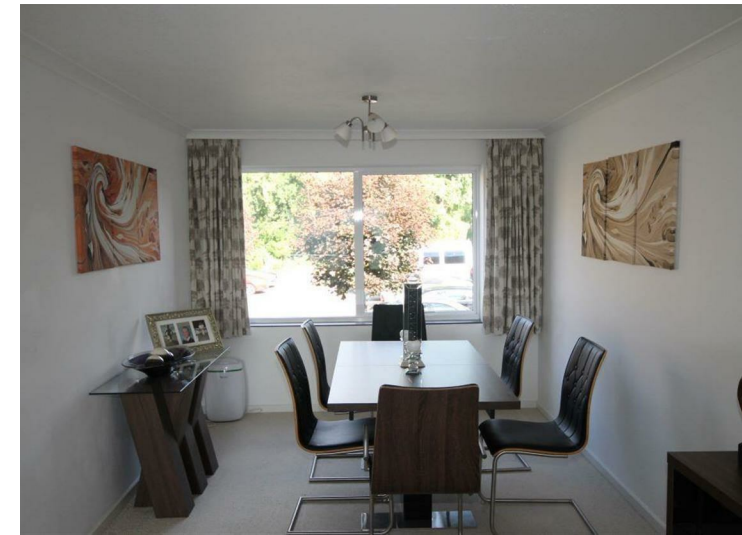
To the outside are well-tended communal gardens and parking which is first come first serve.

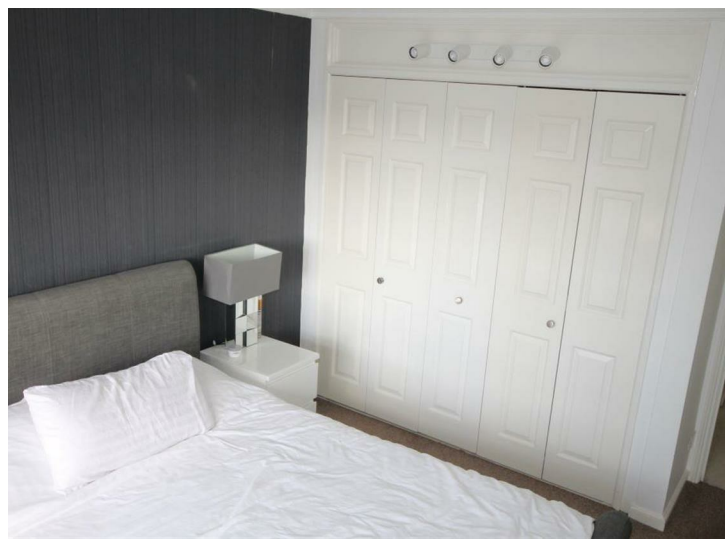
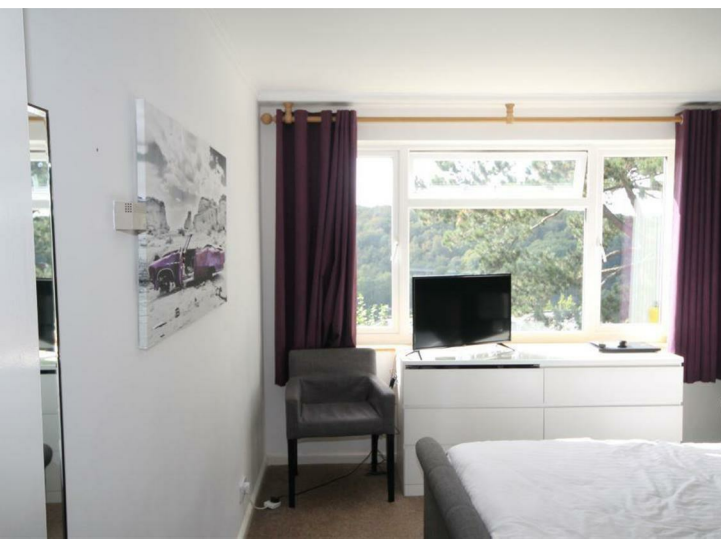
Rent = £1500



Features

- Available Start of October
- Amazing Views
- Two Double Bedrooms
- Balcony
- Off-Street Parking
- Great Size Lounge Diner
- Short walk to the Downs
- Communal Gardens
- Unfurnished





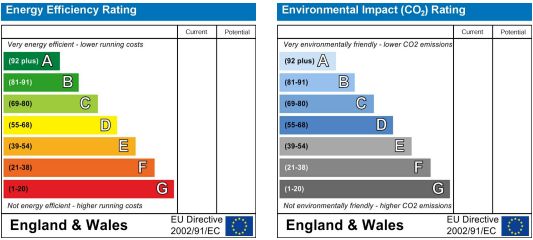
TENURE

SERVICES

Customise to type text here

LOCAL AUTHORITY

Customise to type text here



IMPORTANT: we would like to inform prospective purchasers that these sales particulars have been prepared as a general guide only. A detailed survey has not been carried out, nor the services, appliances and fittings tested. Room sizes should not be relied upon for furnishing purposes and are approximate. If floor plans are included, they are for guidance only and illustration purposes only and may not be to scale. If there are any important matters likely to affect your decision to buy, please contact us before viewing the property.