



SARAH CLARK
PROPERTY CONSULTANTS

RM 1, 65 |
RICHMOND VILLAS, BRISTOL, BS11 9EP

Available Now | An opportunity to rent a good sized double room with en-suite shower room in an immaculate 5 bedroom house, sharing with 4 other professionals.

This room is located on the ground floor, is fully furnished and has a private en-suite shower room.

Furnishings include a double bed, wardrobe, chest of drawers and bedside table. There is a window to front aspect, neutral decoration and carpet.

The communal accommodation consists of an open plan lounge, dining room and kitchen. The kitchen has plenty of storage with a range of wall and base units, electric hob and oven, dishwasher, 2 x fridge freezers and microwave.

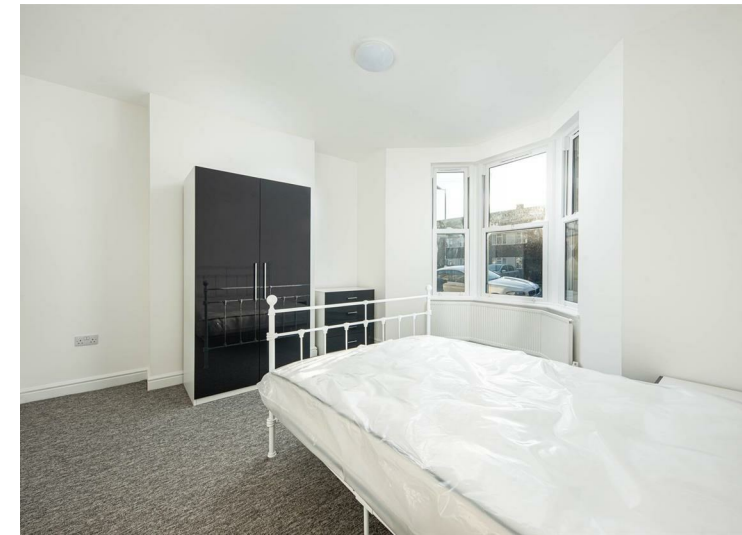
The utility room has further storage, a sink, a washing machine and tumble drier. This leads onto a downstairs cloakroom with wc and basin.

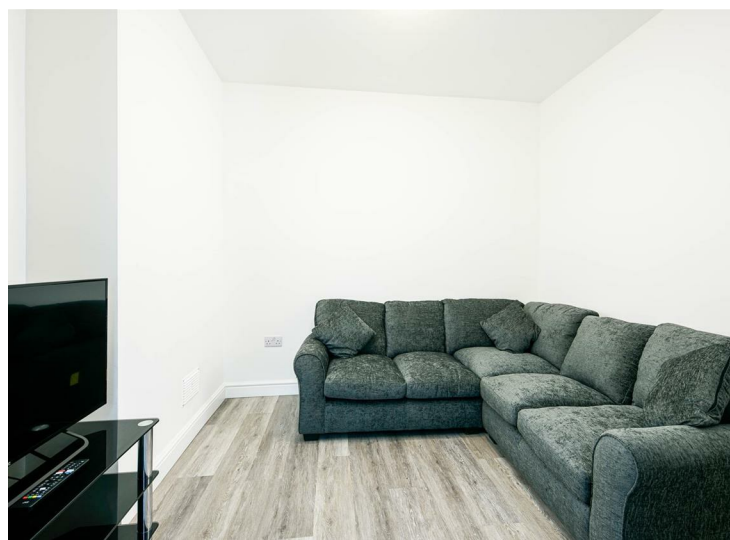
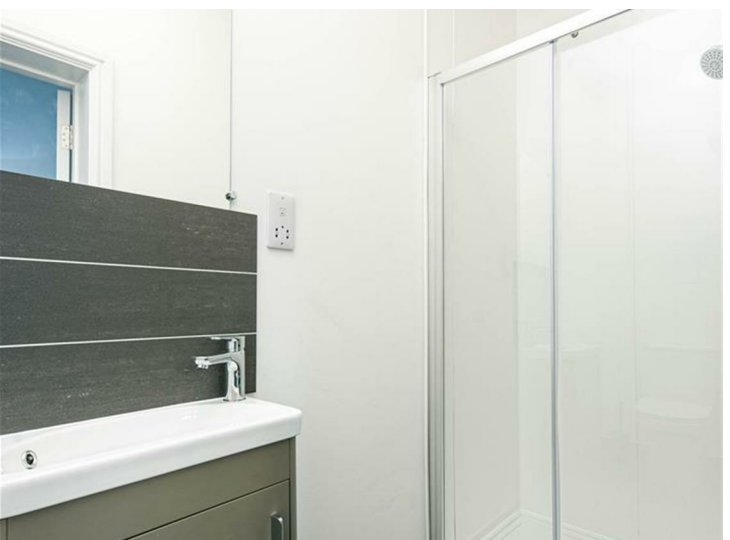
This large open plan kitchen also has a comfortable lounge area, central breakfast bar and double doors leading to a patio and rear garden.



Features

- All Bills Included
- Available Now
- Double Room
- En-suite Shower Room
- Newly Refurbished House
- Close to Avonmouth Village





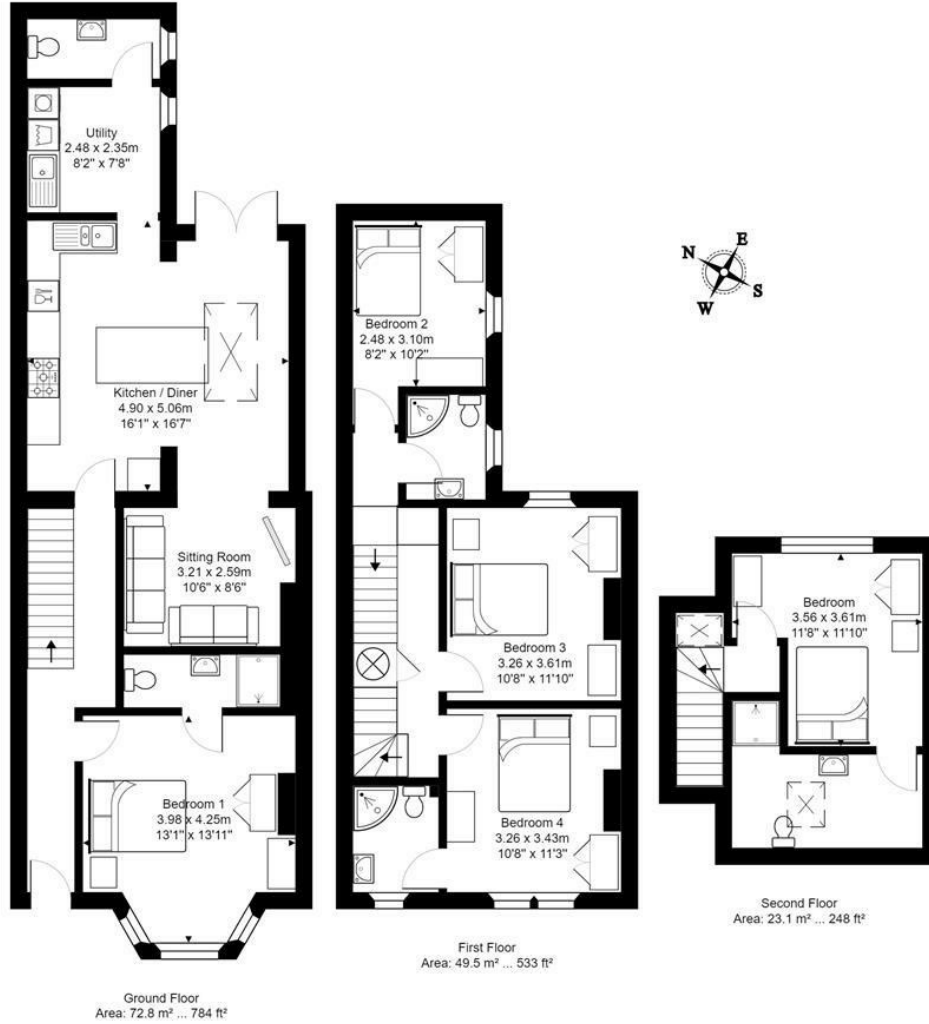
TENURE

SERVICES

Customise to type text here

LOCAL AUTHORITY

Customise to type text here



Total Area: 145.4 m² ... 1565 ft²

All measurements of walls, doors, windows, fittings and appliances, their size and locations are approximate and cannot be regarded as being an accurate representation neither by the vendor nor their agent. www.inovusproperty.co.uk

Energy Efficiency Rating		Environmental Impact (CO ₂) Rating	
	Current	Potential	
Very energy efficient - lower running costs			Very environmentally friendly - lower CO ₂ emissions
(12 plus) A			(92 plus) A
(81-91) B			(81-91) B
(69-80) C			(69-80) C
(55-68) D			(55-68) D
(39-54) E			(39-54) E
(21-38) F			(21-38) F
(1-20) G			(1-20) G
Not energy efficient - higher running costs			Not environmentally friendly - higher CO ₂ emissions
England & Wales		EU Directive 2002/91/EC	England & Wales
			EU Directive 2002/91/EC

IMPORTANT: we would like to inform prospective purchasers that these sales particulars have been prepared as a general guide only. A detailed survey has not been carried out, nor the services, appliances and fittings tested. Room sizes should not be relied upon for furnishing purposes and are approximate. If floor plans are included, they are for guidance only and illustration purposes only and may not be to scale. If there are any important matters likely to affect your decision to buy, please contact us before viewing the property.

t: 0117 4522400

Sarah Clark Property Consultants
159B Whiteladies Road, Clifton, Bristol BS8 2RF

www.sarahclarkproperties.co.uk