



**SARAH CLARK**  
PROPERTY CONSULTANTS

ROOM 5, 65 |  
RICHMOND VILLAS, BRISTOL, BS11 9EP

Available Now | All Bills Included | An opportunity to rent a good sized double room with en-suite shower room in an immaculate 5 bedroom house, sharing with 4 other professionals.

This room is located on the top floor, is fully furnished and has a private en-suite shower room.

Furnishings include a double bed, wardrobe, chest of drawers and bedside table. There is a window to rear aspect, neutral decoration and carpet.

The communal accommodation consists of an open plan lounge, dining room and kitchen. The kitchen has plenty of storage with a range of wall and base units, electric hob and oven, dishwasher, 2 x fridge freezers and microwave.

The utility room has further storage, a sink, a washing machine and tumble drier. This leads onto a downstairs cloakroom with wc and basin.

This large open plan kitchen also has a comfortable lounge area, central breakfast bar and double doors leading to a patio and rear garden.



## Features

- Available Now
- All Bills Included
- Double Room
- En-suite Shower Room
- Fully Furnished
- Sharing with Professionals
- Single Occupancy Only
- Close to Avonmouth Village





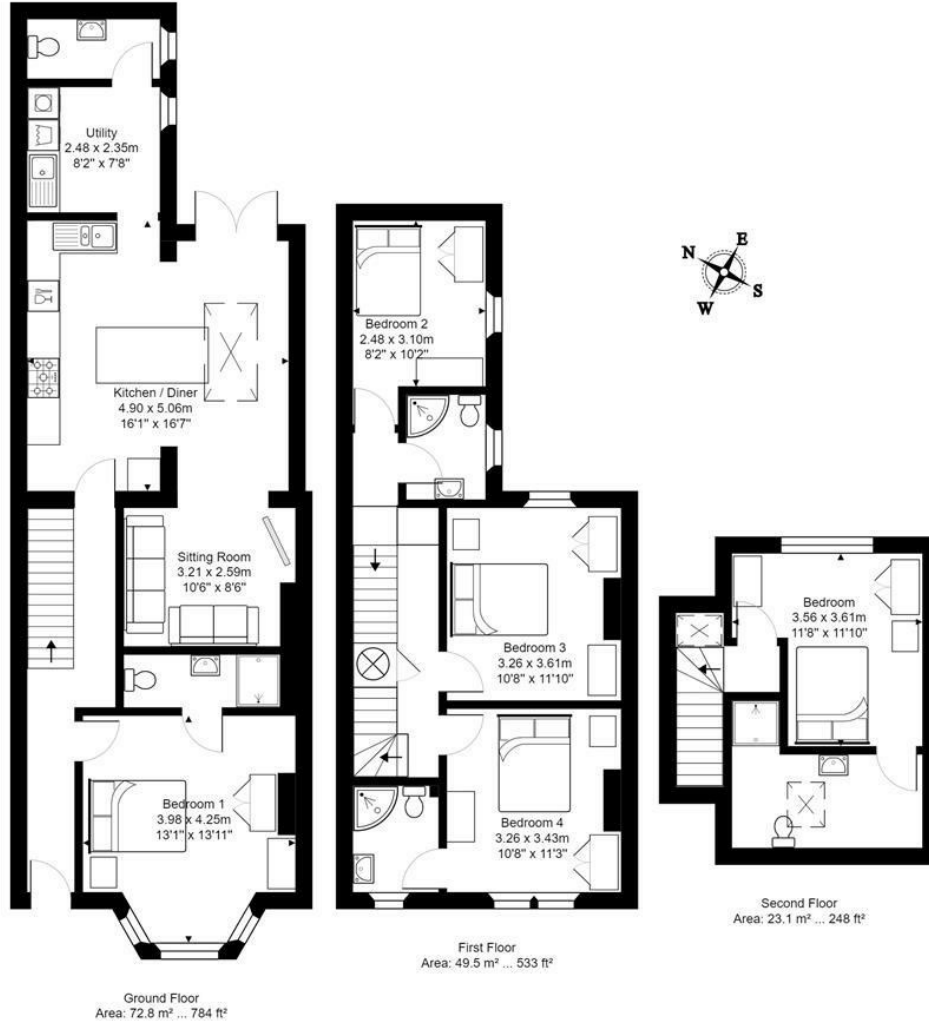
TENURE

SERVICES

Customise to type text here

LOCAL AUTHORITY

Customise to type text here



Total Area: 145.4 m<sup>2</sup> ... 1565 ft<sup>2</sup>

All measurements of walls, doors, windows, fittings and appliances, their size and locations are approximate and cannot be regarded as being an accurate representation neither by the vendor nor their agent.  
www.inovusproperty.co.uk

Energy Efficiency Rating		Environmental Impact (CO <sub>2</sub> ) Rating				
	Current	Potential		Current	Potential	
Very energy efficient - lower running costs						
(92 plus) <b>A</b>				(92 plus) <b>A</b>		
(81-91) <b>B</b>				(81-91) <b>B</b>		
(69-80) <b>C</b>				(69-80) <b>C</b>		
(55-68) <b>D</b>				(55-68) <b>D</b>		
(39-54) <b>E</b>				(39-54) <b>E</b>		
(21-38) <b>F</b>				(21-38) <b>F</b>		
(1-20) <b>G</b>				(1-20) <b>G</b>		
Not energy efficient - higher running costs						
England & Wales		EU Directive 2002/91/EC		England & Wales		EU Directive 2002/91/EC

Energy Efficiency Rating: 73 (Current), 83 (Potential)

Environmental Impact (CO<sub>2</sub>) Rating: A (Current), A (Potential)

IMPORTANT: we would like to inform prospective purchasers that these sales particulars have been prepared as a general guide only. A detailed survey has not been carried out, nor the services, appliances and fittings tested. Room sizes should not be relied upon for furnishing purposes and are approximate. If floor plans are included, they are for guidance only and illustration purposes only and may not be to scale. If there are any important matters likely to affect your decision to buy, please contact us before viewing the property.