



SARAH CLARK  
PROPERTY CONSULTANTS

23 |  
BELMONT ROAD, BRISTOL, BS6 5AW



Available immediately, this beautifully presented two double-bedroom garden flat is perfectly located in the highly sought-after St Andrews area of Bristol. Positioned on a peaceful residential street and within easy walking distance of the vibrant Gloucester Road, this home offers comfort, convenience, and excellent outdoor space.

Inside, the flat benefits from a bright and spacious living room, along with a separate modern fitted kitchen, making it ideal for relaxed living and entertaining.

The stylish, contemporary bathroom features elegant tiling and an enclosed shower. Both bedrooms are generous doubles, providing great flexibility for sharers or professionals working from home.

To the rear of the property is a fantastic private garden, complete with patio and lawn—perfect for barbecues, outdoor dining, or simply unwinding after work.

**Key Features:**

- Two double bedrooms
- Separate kitchen and living room
- Beautifully tiled bathroom with enclosed shower



## Features

- Available Now
- Two Double Bedrooms
- Furnished Apartment
- Modern Kitchen
- Private Entrance
- Garden
- Would suit 2 professional sharers





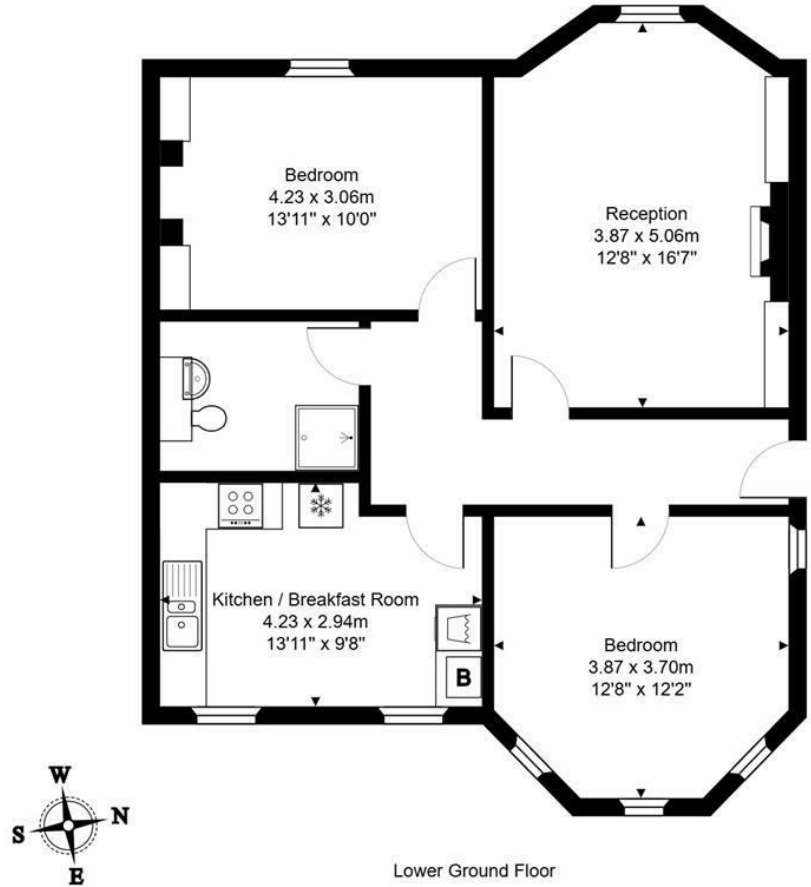
TENURE

SERVICES

Customise to type text here

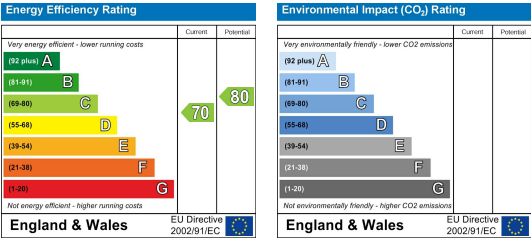
LOCAL AUTHORITY

Customise to type text here



Total Area: 73.5 m² ... 791 ft²

All measurements of walls, doors, windows, fittings and appliances, their size and locations are approximate and cannot be regarded as being an accurate representation neither by the vendor nor their agent.  
[www.inovusproperty.co.uk](http://www.inovusproperty.co.uk)



IMPORTANT: we would like to inform prospective purchasers that these sales particulars have been prepared as a general guide only. A detailed survey has not been carried out, nor the services, appliances and fittings tested. Room sizes should not be relied upon for furnishing purposes and are approximate. If floor plans are included, they are for guidance only and illustration purposes only and may not be to scale. If there are any important matters likely to affect your decision to buy, please contact us before viewing the property.