



**SARAH CLARK**  
PROPERTY CONSULTANTS

FLAT 2, 37 |  
KINGS PARADE AVENUE, BRISTOL, BS8 2RE



Student Apartment Available 1st August 2025 | 3 Double Bedrooms | Fully Equipped Kitchen | Fully Furnished.

This bright well situated student apartment is located in the sought after area of Clifton close to the vast array of amenities on Whiteladies Road and within walking distance of the Triangle and Park Street.

The accommodation consists of Lounge to the front of the property looking out to Whiteladies Road, a fully equipped kitchen with a range of wall and base units providing storage, electric oven, fridge/freezer and washing machine.

There are three double bedrooms all with built-in wardrobes, bed and desk. Finally there is a bathroom with shower over bath and a separate wc and basin.

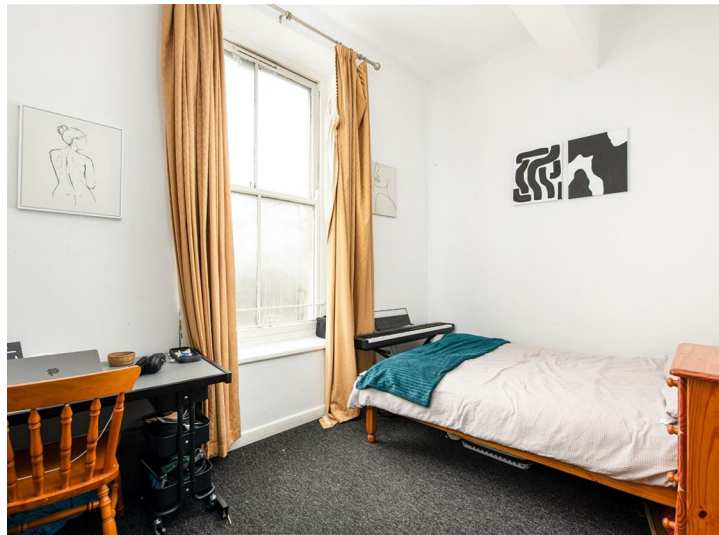
Fully inclusive bills package available.

Rent = £2400 pcm  
Deposit = £2769  
12 month tenancy  
EPC = D



## Features

- Available 1st August 2025
- Student Apartment
- Three Double Bedrooms
- Fully Equipped Kitchen
- Shower Room and Separate WC
- Clifton Location







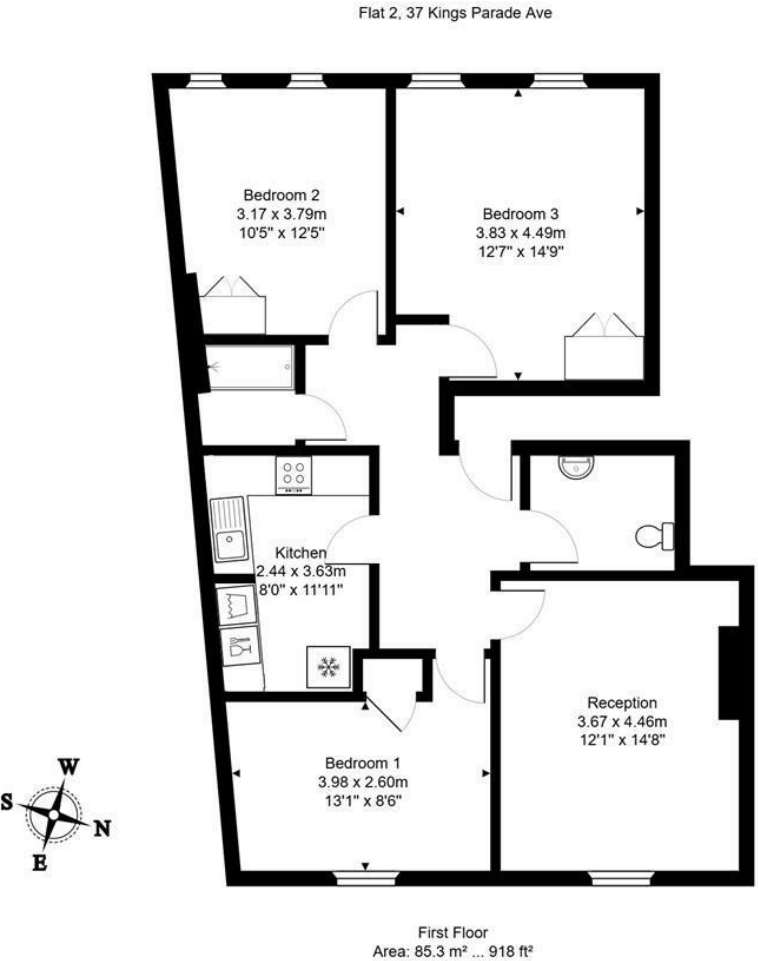
TENURE

SERVICES

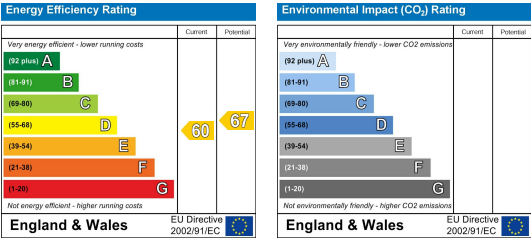
Customise to type text here

LOCAL AUTHORITY

Customise to type text here



All measurements of walls, doors, windows, fittings and appliances, their size and locations are approximate and cannot be regarded as being an accurate representation neither by the vendor nor their agent.  
[www.inovusproperty.co.uk](http://www.inovusproperty.co.uk)



IMPORTANT: we would like to inform prospective purchasers that these sales particulars have been prepared as a general guide only. A detailed survey has not been carried out, nor the services, appliances and fittings tested. Room sizes should not be relied upon for furnishing purposes and are approximate. If floor plans are included, they are for guidance only and illustration purposes only and may not be to scale. If there are any important matters likely to affect your decision to buy, please contact us before viewing the property.