



8 Pudding Mews,
Hexham, Northumberland, NE46 3SW

youngsRPS 

8 Pudding Mews Hexham Northumberland NE46 3SW

Guide Price: £100,000

Two bedroom first floor apartment, situated within a sought after development in the centre of the popular market town of Hexham.

- Two bedroom apartment
- First floor
- Over 55's complex
- Secure entry system
- Lift access
- Communal parking
- Central Hexham location
- Energy efficiency rating D (62)

youngsRPS 

01434 608980





DESCRIPTION

Two bedroom first floor apartment, situated within a sought after development in the centre of the popular market town of Hexham.

The property is situated within the over 55's complex and benefits from lift access and a secure entry system.

The front door opens into the entrance hall with storage cupboard. The kitchen is fitted with a range of stylish wall and base units with integrated oven and ceramic hob. The living room is a light and spacious room with windows to the front and side elevation. There are two bedrooms and a shower room with walk in shower, WC and wash hand basin set within a vanity unit. Externally the property benefits from communal parking.

LOCATION

Pudding Mews is situated in the centre of the popular market town of Hexham, within walking distance of all the facilities and amenities the town has to offer. The property is well placed for the excellent schools in Hexham. The thriving market town of Hexham was voted the happiest place to live in Great Britain by Rightmove's annual Happy at Home index in 2019 and 2021. The streets of Hexham are home to many independent businesses, from delicatessens and greengrocers through to sport and arts centres.

Despite being surrounded by the tranquil Tyne Valley countryside, Hexham is within excellent road and rail distance of Newcastle, Carlisle and beyond; making it the perfect location for those that enjoy both country and metropolitan pursuits.

SERVICES

Mains electricity, water and drainage are connected. Electric night storage heaters with immersion heater supplying the domestic hot water.

CHARGES

Northumberland County Council tax band B.
Leasehold property managed by Kingston Property Services. 150 year lease commencing in July 1989 (116 years remaining).
Annual service charge £2000.

VIEWINGS

Viewing is strictly by appointment. Arrangements can be made by contacting YoungsRPS, Hexham on 01434 608980.

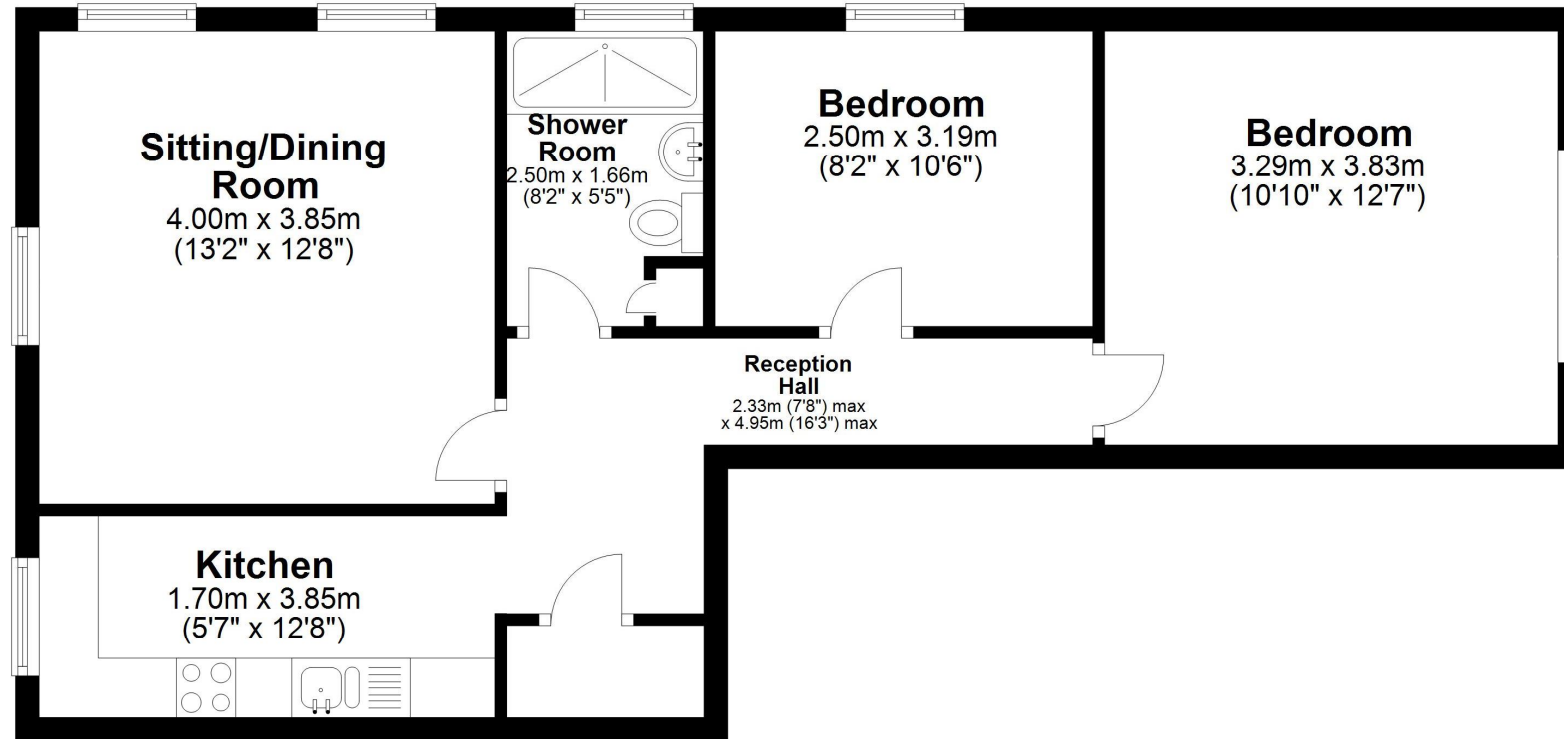
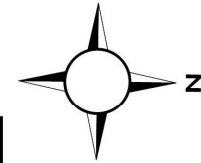
FREE MARKET APPRAISAL

We would be pleased to provide professional, unbiased advice on the current value and marketing of your existing home.



Ground Floor

Approx. 57.8 sq. metres (622.6 sq. feet)



Total area: approx. 57.8 sq. metres (622.6 sq. feet)
8 Pudding Mews, HEXHAM

IMPORTANT NOTE: Consumer Protection from Unfair Trading Regulations 2008 and the Business Protection from Misleading Marketing Regulations 2008: We endeavour to make our sales particulars accurate and reliable. They should be considered as general guidance only and do not constitute all or any part of the contract. None of the services, fittings and equipment have been tested. Measurements, where given, are approximate and for descriptive purposes only. Boundaries cannot be guaranteed and must be checked by solicitors prior to exchange of contracts. Prospective buyers and their advisers should satisfy themselves as to the facts, and before arranging an inspection, availability. Further information on points of particular importance can be provided. No person in the employment of YoungsRPS (NE) Ltd has any authority to make or give any representation or warranty whatever in relation to this property.



R201

NORTHALLERTON
General: 01609 773004
Land Agency: 01609 781234
northallerton@youngsrps.com

SEDGEFIELD
General: 01740 617377
Land Agency: 01740 622100
sedgefield@youngsrps.com

NEWCASTLE
General: 0191 261 0300
newcastle@youngsrps.com

HEXHAM
General: 01434 608980
Land Agency: 01434 609000
hexham@youngsrps.com

DUMFRIES
General: 01387 402277
dumfries@youngsrps.com