



DICKINSON APARTMENTS, BEAUMONT STREET, HEXHAM,  
NORTHUMBERLAND, NE46 3BW

# DICKINSON APARTMENTS, BEAUMONT STREET

Discover a collection of stylish 1 to 3-bedroom apartments in the heart of Hexham's historic market town. These modern residences offer elegant living with scenic views of Hexham Abbey and are ideally located just steps from boutique shops, charming cafés, and cultural landmarks. Experience contemporary comfort in a timeless setting.

- 9 luxury apartments
- Range of 1-3 bedrooms
- High quality finish
- Convenient central location
- Lift access
- Parking options available include 4 garages and 2 parking spaces (under a licence agreement)

IMPORTANT NOTE: Consumer Protection from Unfair Trading Regulations 2008 and the Business Protection from Misleading Marketing Regulations 2008: We endeavour to make our sales particulars accurate and reliable. They should be considered as general guidance only and do not constitute all or any part of the contract. None of the services, fittings and equipment have been tested. Measurements, where given, are approximate and for descriptive purposes only. Boundaries cannot be guaranteed and must be checked by solicitors prior to exchange of contracts. Prospective buyers and their advisers should satisfy themselves as to the facts, and before arranging an inspection, availability. Further information on points of particular importance can be provided. No person in the employment of youngsRPS (NE) Ltd has any authority to make or give any representation or warranty whatever in relation to this property.





## DESCRIPTION

Offering timeless character and modern comfort, housed in a handsome, traditional stone-built structure, Dickinson Apartments seamlessly blend classic architecture with contemporary design.

Each apartment is thoughtfully designed with bright, open-plan living spaces, bespoke kitchens, and generously proportioned bedrooms. High-end finishes and quality craftsmanship are evident throughout, creating a refined yet welcoming atmosphere. The bespoke kitchens are well equipped with premium integrated appliances — combining sleek aesthetics with everyday functionality.

A central atrium welcomes residents with natural light and a warm ambiance. The traditional staircase with elegant balustrading is complemented by a lift, ensuring accessibility for all.

## LOCATION

Hexham is a charming and historic market town in Northumberland, renowned for its picturesque setting in the Tyne Valley and its excellent transport links. Steeped in history, the town is home to the beautiful Hexham Abbey, a vibrant marketplace, and a wide selection of independent shops, cafés, and restaurants.

The area offers a strong sense of community and is well-served by a range of local amenities including supermarkets, schools, and healthcare facilities. For outdoor enthusiasts, the surrounding countryside provides ample opportunities for walking, cycling, and exploring the nearby Northumberland National Park and Hadrian's Wall.

Hexham enjoys good connectivity, with regular rail services to Newcastle and Carlisle, and easy access to the A69, making it a convenient base for commuters and families alike.

## Charges

Leasehold property- 999 years

Service charge circa £1100pa

## Services

Mains electricity, gas, water and drainage are connected. Gas fired central heating to radiators also supplying the domestic hot water.

## Wayleaves, Easements & Right of Way

The property is being sold subject to all existing wayleaves, easements and rights of way, whether or not specified within the sales particulars.



## Apartment 1

This beautifully presented apartment offers contemporary living at its finest, featuring a spacious open-plan kitchen and living area designed for both comfort and style. Two bright double bedrooms each benefit from private en-suite shower rooms. A separate WC and utility room add practicality to the elegant design. Overlooking the charming high street, the property boasts views that capture the essence of the local community. An illuminated feature ceiling enhances the main living area, adding a modern touch to this inviting home — perfect for those seeking a blend of convenience, character, and sophisticated living.



Total area: approx. 73.1 sq. metres (787.1 sq. feet)  
**1 Dickinson Apartments, Hexham**

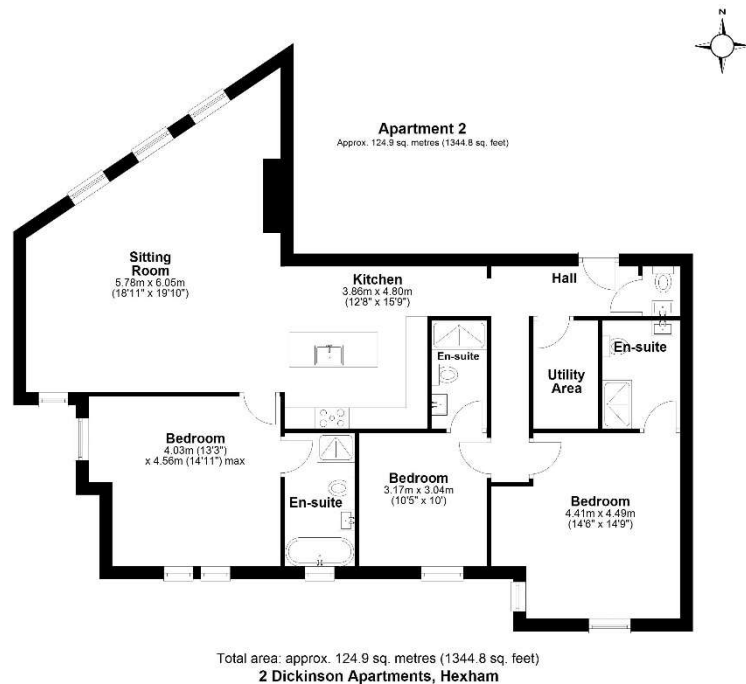


## Apartment 2

At the centre of the apartment is a large bespoke kitchen, thoughtfully designed with a generous central island, elegant quartz worktops, and a full range of fully integrated appliances. A dedicated utility room complements the kitchen, offering fitted storage, open shelving, and plumbing for laundry facilities.

The accommodation includes three spacious double bedrooms, each with its own private en-suite, offering comfort and privacy for family or guests. The principal bedroom suite is particularly impressive, featuring a luxurious freestanding bathtub, a stylish vanity unit, and premium fittings throughout.

One of the standout features of this apartment is the stunning, elevated views across to Hexham Abbey, providing a truly special outlook that enhances the character and setting of the property.





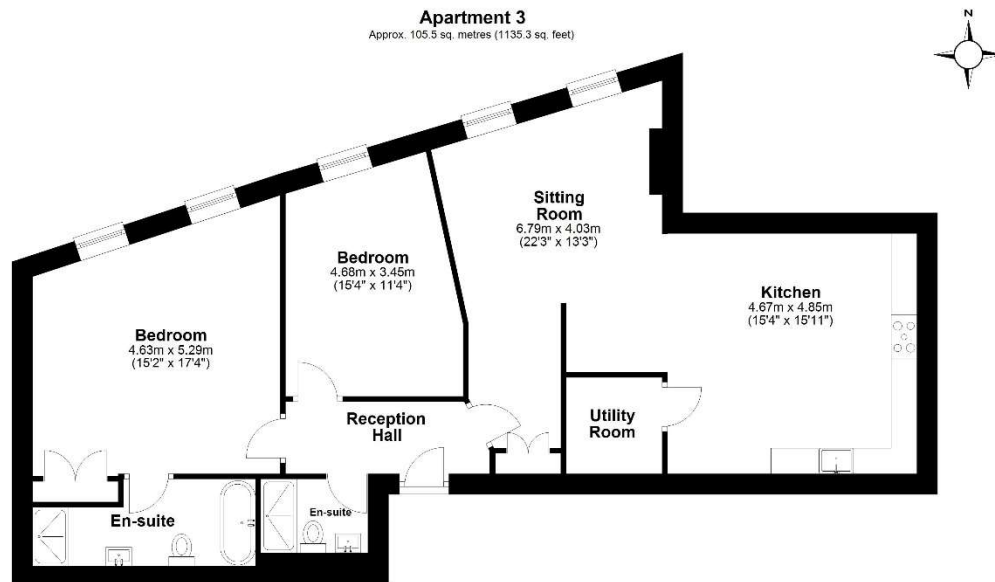
### Apartment 3

The apartment opens into a welcoming entrance hall, leading through to a bright and airy open-plan kitchen and sitting room. The bespoke kitchen is a standout feature, complete with quartz worktops, fully integrated quality appliances, and elegant cabinetry—perfect for both entertaining and everyday living.

A separate utility room provides additional storage and convenience, with an integrated washer/dryer and open shelving. A contemporary shower room with WC offers added practicality for guests.

The principal double bedroom is generously sized and benefits from a luxurious en-suite, featuring a freestanding bathtub, walk-in shower, and a sleek vanity unit—all set against tasteful tiled flooring. The second double bedroom is ideal for guests, a home office, or dressing room, and also enjoys easy access to the main shower room.

One of the standout features of this apartment is the stunning, elevated views across to Hexham Abbey, providing a truly special outlook that enhances the character and setting of the property.



Total area: approx. 105.5 sq. metres (1135.3 sq. feet)  
3 Dickinson Apartments, Hexham

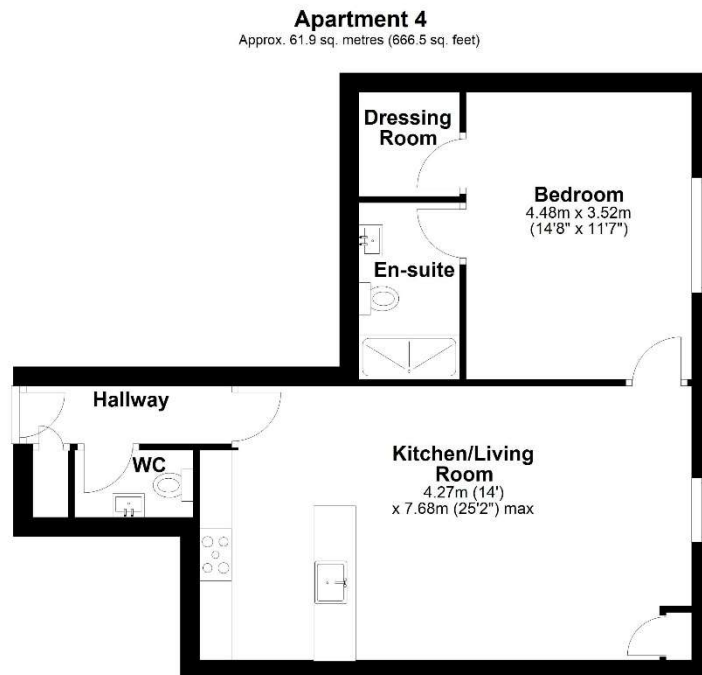




## Apartment 4

The property features a welcoming entrance hall leading to a generous open-plan kitchen and living area, complete with a bespoke kitchen with quartz worktop, a large peninsula island, and fully integrated quality appliances—ideal for modern living and entertaining. The living space is enhanced by illuminated feature ceilings, creating a warm and striking ambience.

The luxurious principal bedroom benefits from its own dressing room and a sleek en-suite shower room, offering privacy and comfort. A separate WC adds extra convenience for guests.



Total area: approx. 61.9 sq. metres (666.5 sq. feet)  
**4 Dickinson Building, Hexham**

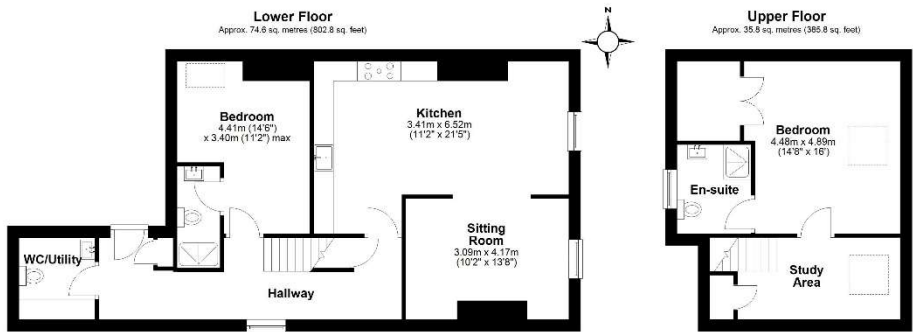


**Apartment 5**

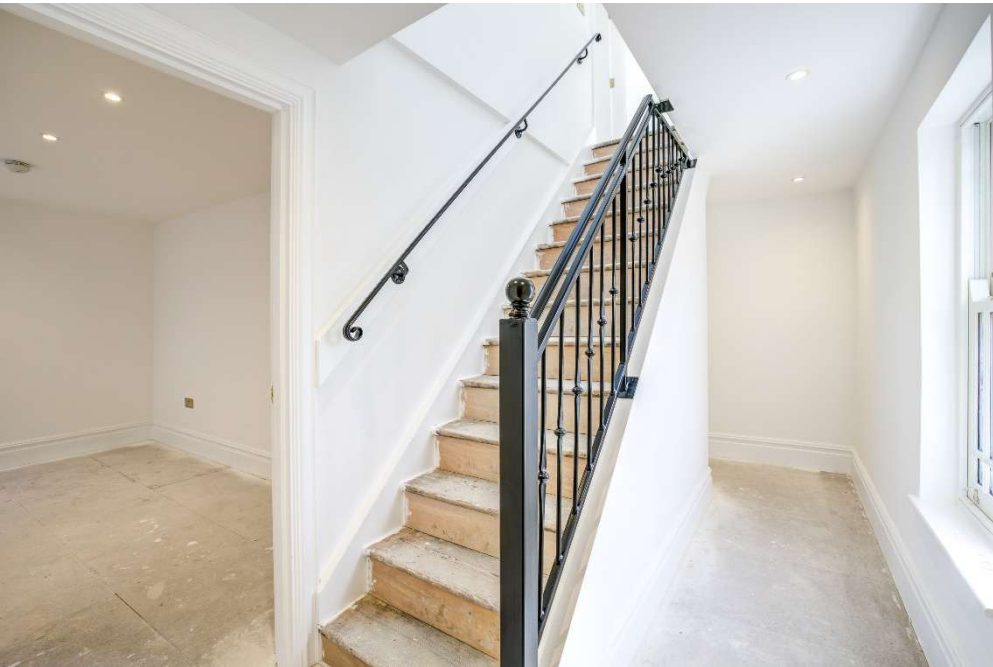
A superb and spacious two-storey apartment, offering generous living space, stylish finishes, and two en-suite double bedrooms, this unique home combines practicality with character and light-filled interiors.

The ground floor comprises a welcoming entrance hall, a modern kitchen/diner with fully integrated appliances, a comfortable sitting room, a convenient WC/utility room with integrated washer/dryer, and a double bedroom with its own en-suite shower room—ideal for guests or flexible living.

Upstairs, the impressive principal bedroom suite features a walk-in dressing room and a sleek en-suite bathroom. Skylight windows throughout the bedrooms flood the space with natural light, creating a bright and airy atmosphere.



Total area: approx. 110.4 sq. metres (1188.6 sq. feet)  
**5 Dickinson Apartments, Hexham**



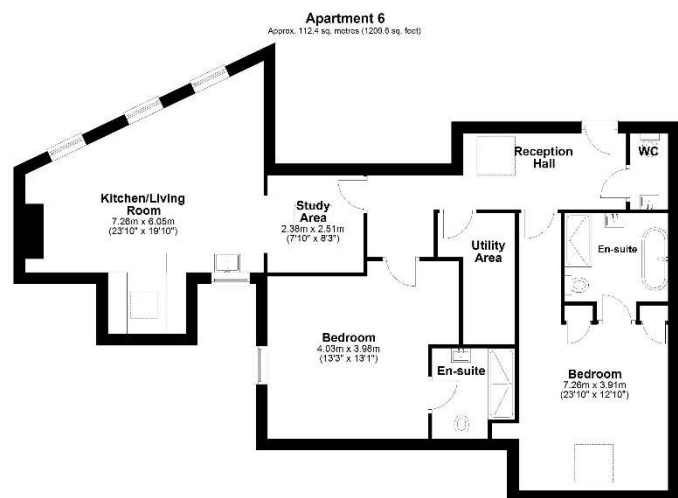
## Apartment 6

An exceptional and luxuriously finished two-bedroom apartment offering a rare blend of contemporary design, spacious accommodation, and stunning views over Hexham Abbey. Thoughtfully laid out and beautifully presented, this apartment is ideal for those seeking stylish, low-maintenance living in one of Northumberland's most desirable market towns.

On entering the property, you're welcomed by a spacious entrance hall, which leads to a convenient WC and a well-appointed utility room, complete with custom-fitted cabinetry, open shelving, and plumbing for laundry. A versatile study area provides excellent potential as a home office, creative workspace, or quiet reading nook—ideal for today's flexible lifestyles.

The heart of the home is the bespoke open-plan kitchen/living room, designed for both comfort and entertaining. The kitchen features elegant quartz worktops and fully integrated quality appliances, all finished to a high standard. The generous living area is filled with natural light from skylights and large windows, and enhanced by an illuminated feature ceiling, creating a warm and inviting atmosphere.

The accommodation includes two spacious double bedrooms, each with their own private en-suite. The principal suite is a standout feature, offering a luxurious en-suite bathroom with a freestanding bathtub, walk-in shower, and stylish vanity unit. The second bedroom also benefits from a sleek en-suite shower room, making this property ideal for guests or shared living.



Total area: approx. 112.4 sq. metres (1209.6 sq. feet)  
6 Dickinson Apartments, Hexham

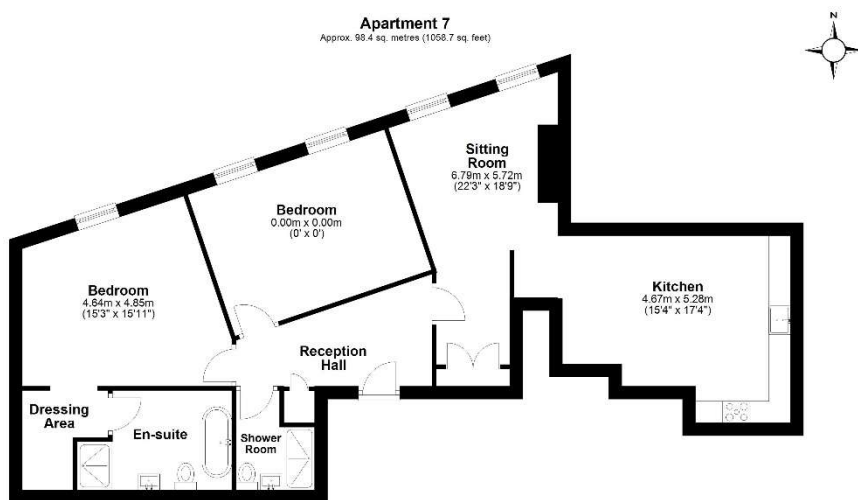


## Apartment 7

The apartment opens into a welcoming entrance hall, leading into a stunning open-plan kitchen/diner and sitting room. The bespoke kitchen features quartz worktops, fully integrated appliances, and an elegant design that flows seamlessly into the dining and lounge area. The space is further enhanced by custom-built, bespoke storage, offering both practicality and style.

The principal bedroom suite is a peaceful retreat, complete with a dedicated dressing area and a luxurious en-suite bathroom. This elegant en-suite boasts a freestanding bathtub, walk-in separate shower, and tasteful finishes throughout. A second double bedroom is served by a separate shower room with WC, ideal for guests or shared living.

Large windows throughout the apartment frame magnificent views of Hexham Abbey, filling the home with natural light and providing a constant connection to the town's rich heritage.



Total area: approx. 98.4 sq. metres (1058.7 sq. feet)  
7 Dickinson Apartments, Hexham

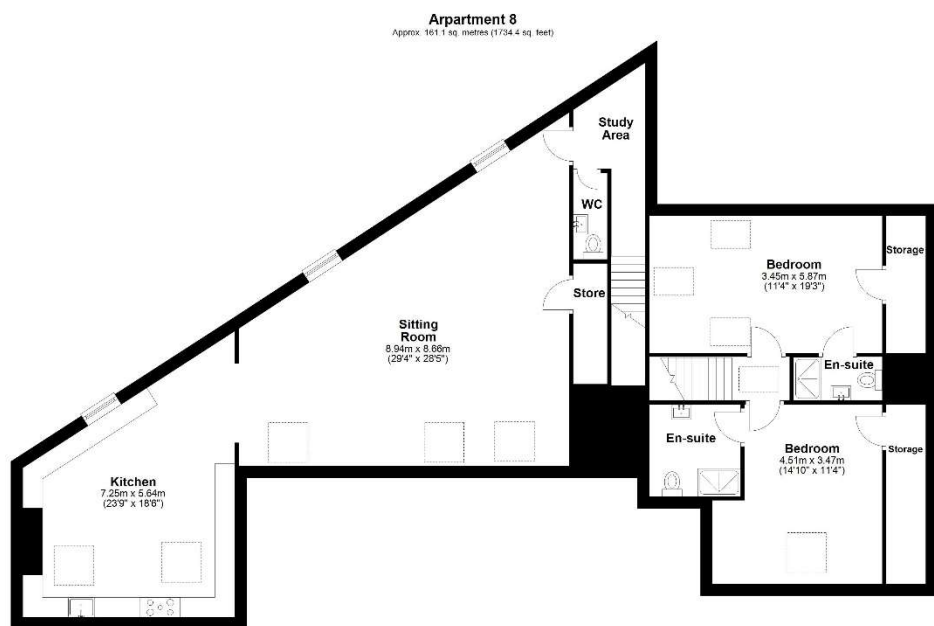


## Apartment 8

A stunning, multi-level penthouse apartment, featuring exposed brickwork, A-frame architecture, and a wealth of natural light from dormer and skylight windows.

At its heart is a stylish open-plan kitchen/diner, fitted with bespoke cabinetry, quartz worktops, and fully integrated appliances, flowing seamlessly into a spacious sitting area—perfect for relaxing or entertaining. A dedicated study area offers an ideal space for remote work or reading.

The apartment features two double bedrooms, both with elegant en-suite shower rooms and ample built-in storage, offering privacy and comfort. A convenient WC completes the well-considered layout.



Total area: approx. 161.1 sq. metres (1734.4 sq. feet)  
8 Dickinson Apartments, Hexham

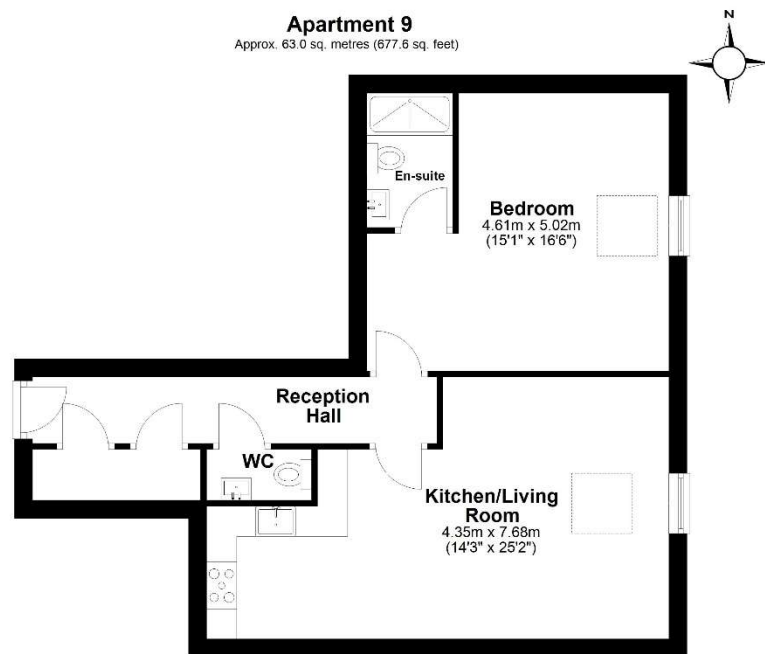




## Apartment 9

A superb and spacious one-bedroom top floor apartment offering stylish, modern living in a highly sought-after location.

This beautifully designed apartment features a bright open-plan kitchen and living room, enhanced by skylight windows that flood the space with natural light. The bespoke kitchen is finished to a high standard, with fully integrated quality appliances and quartz worktops. The generously sized double bedroom benefits from a luxurious en-suite shower room, complete with a large walk-in shower and a marble top vanity unit. A separate WC and a welcoming entrance hall complete this exceptional apartment, which combines comfort, quality, and elegance throughout.



Total area: approx. 63.0 sq. metres (677.6 sq. feet)

**9 Dickinson Apartments, Hexham**





[www.youngsrps.com](http://www.youngsrps.com)  
Hexham 01434 608980

