



3 The Common, Child Okeford, Dorset DT11 8QY









**A delightful two bedroom period cottage with delightful views over the rural countryside, situated in the quiet village of Child Okeford with over a 100ft of garden.**

This charming period cottage combines traditional character with exciting scope for improvement, set in a picturesque position with a generous garden and convenient parking site opposite.

The brick façade and pitched roof create a welcoming first impression, complemented by a porch entrance and mature front planting. Inside, a spacious living room features an exposed ceiling beam and a wood-burning stove (not tested), while the kitchen and breakfast area enjoys garden views and offers a practical layout ready for updating.

Upstairs, two bedrooms include a well-proportioned main room with extensive built-in storage, alongside a bathroom with a classic suite. The rear garden extends beautifully, providing ample space for outdoor living.

Surrounded by glorious Dorset countryside, the home sits close to the iconic Hambledon Hill, offering stunning walks and far-reaching views right on the doorstep. With its appealing setting and original features, this home presents an excellent opportunity to blend timeless charm with modern comforts.

#### PARKING INFORMATION:

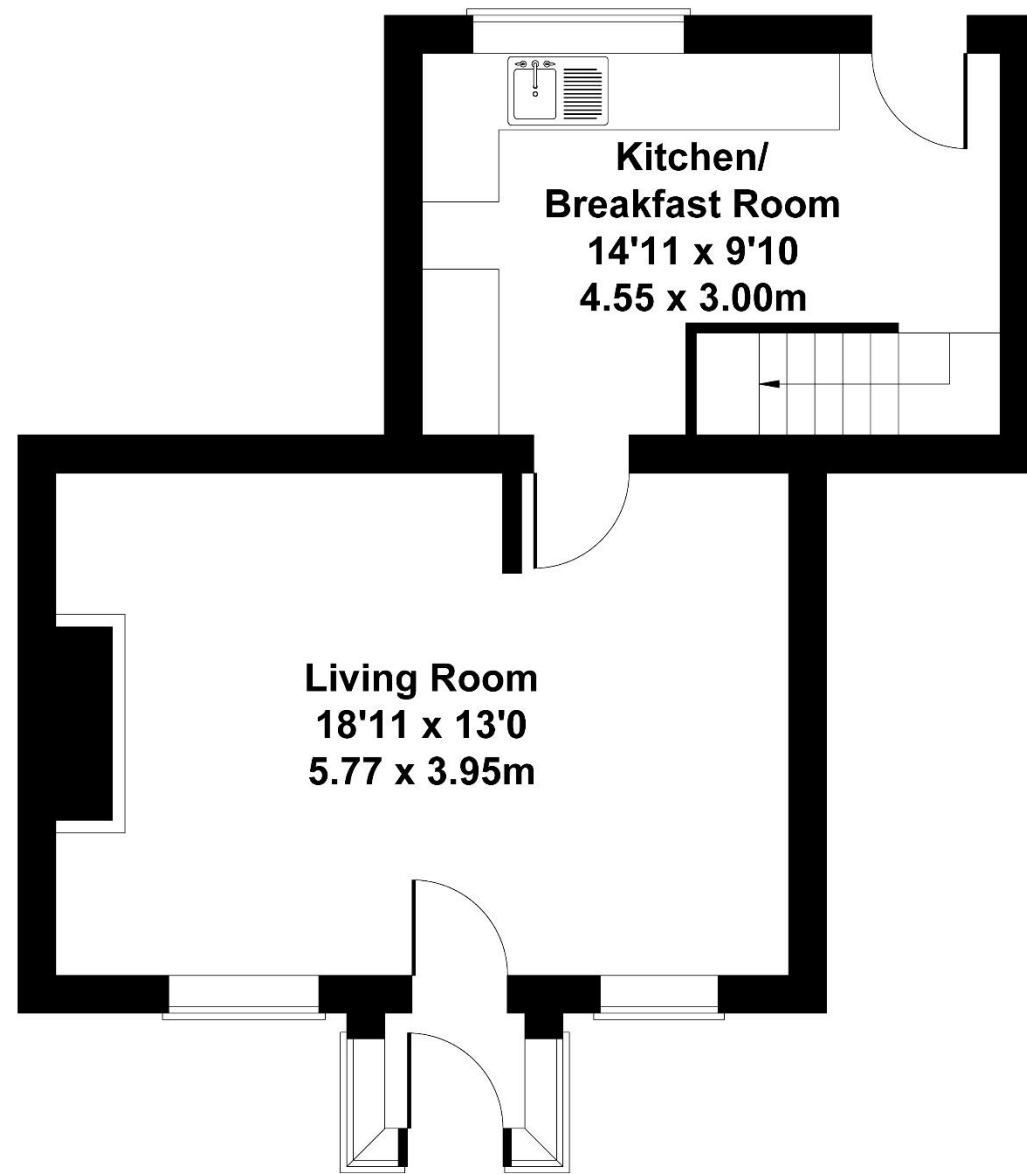
The property benefits from two parking spaces on a leasehold basis from neighbouring farm land. The owner pays approximately £180 per annum for TWO SPACES.

£260,000 Freehold

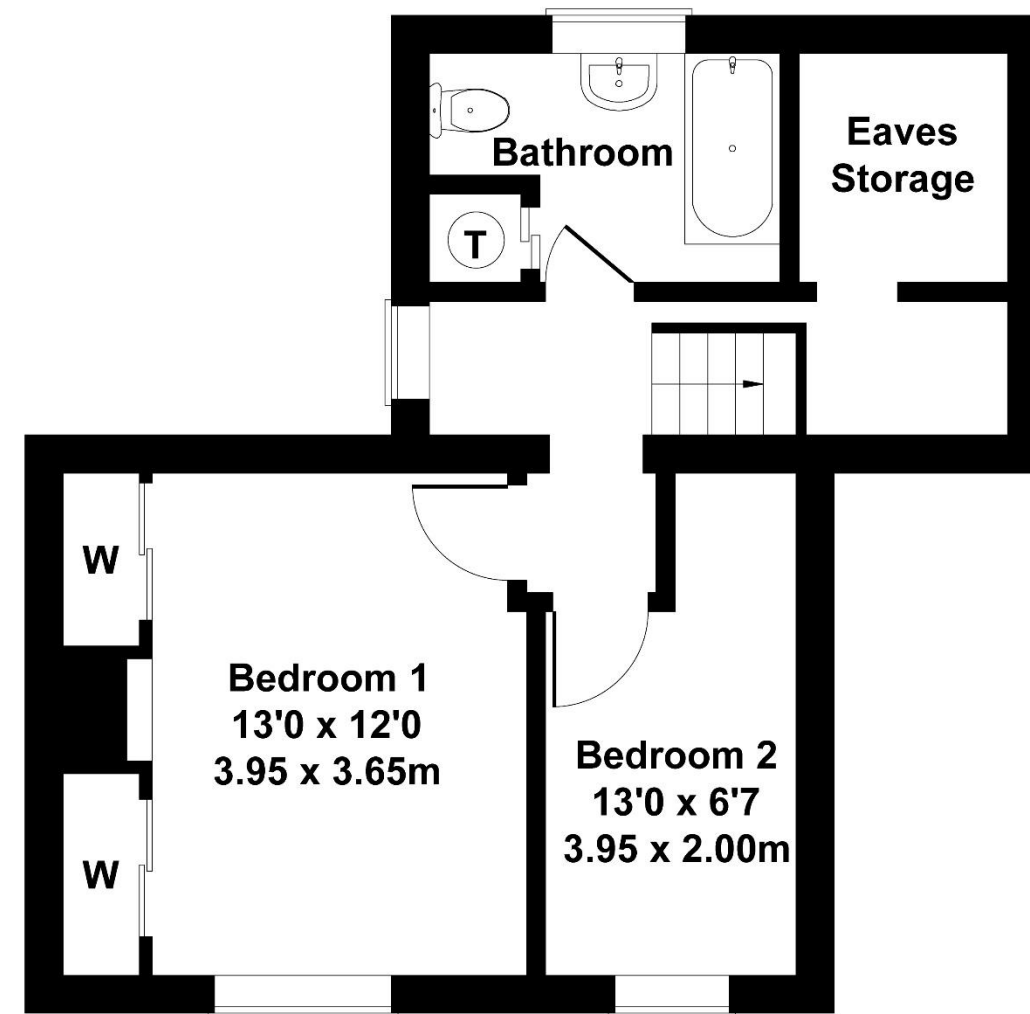


# 3 The Common

Approximate Gross Internal Area  
775 sq ft - 72 sq m



**GROUND FLOOR**



**FIRST FLOOR**

Not to Scale. Produced by The Plan Portal 2025  
**For Illustrative Purposes Only.**

Please note Forum Sales & Lettings and their client give notice that:

1. They have no authority to make or give any representation or warranties in relations to the property. These particulars do not form part of any offer or contract and must not be relied upon as statements or representations of fact.

2. Any areas, common measurements or distances are approximate. The text, photographs and plans are for guidance only and are not necessarily comprehensive. It should not be assumed that the property has all necessary Planning, Building Regulations or other consents and Forum Sales and Lettings have not tested any services, equipment or facilities. Purchasers must satisfy themselves by inspection or otherwise.

EPC Rating - D

Viewing Arrangements - Strictly by appointment with Forum Sales & Lettings

15 Salisbury Street, Blandford Forum, Dorset, DT11 7AU

Tel: 01258 459600