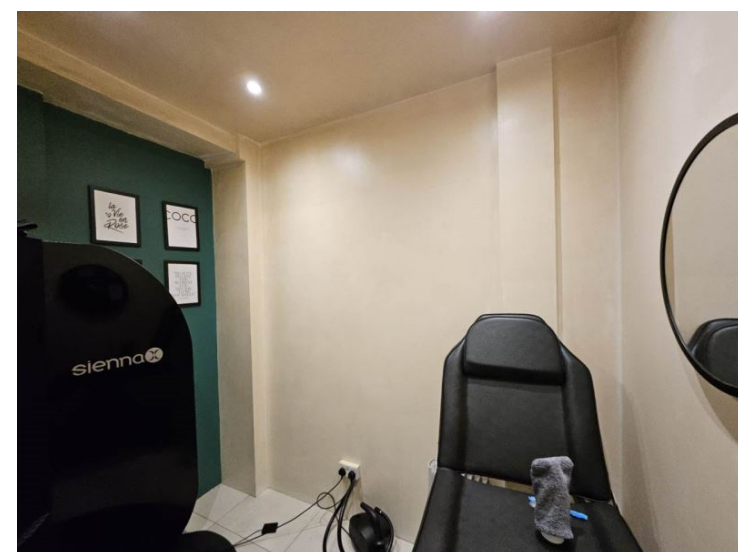
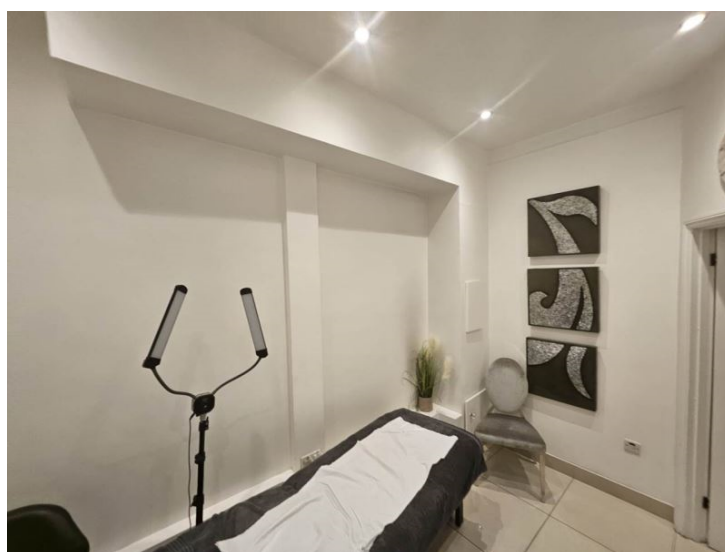
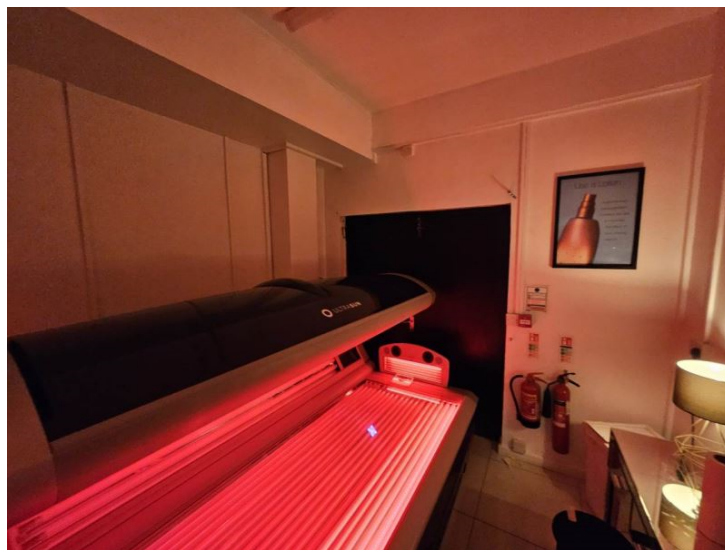
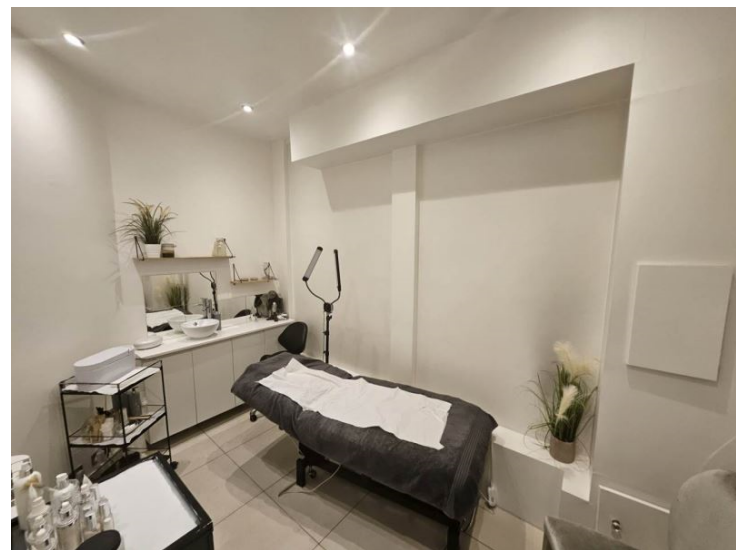




Angel Pavement
SG8 9AS

£1,150 Monthly

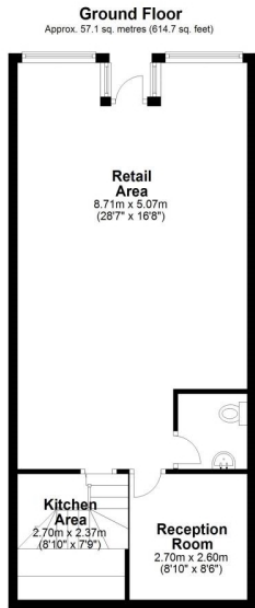




01763259888

Abode are delight to offer to market this town centre retail unit in the historic market town of Royston, Hertfordshire. Located on Angel Pavement the property benefits from being in a high footfall location between Market Hill and the High Street. There is ample parking within 10 metres of the property, and Angel pavement benefits from a variety of well supported local stores, always ensuring good footfall. The property falls below the business rate valuation and would attract 100% small business rate relief. The property is available from the 1st of May 2024, viewing is by prior appointment only, please contact Abode to arrange a viewing.

About Royston



Total area: approx. 57.1 sq. metres (614.7 sq. feet)



Energy Efficiency Rating		
	Current	Potential
<i>Very energy efficient - lower running costs</i>		
(92-100) A		
(81-91) B		
(69-80) C	71	
(55-68) D		
(39-54) E		
(21-38) F		
(1-20) G		0
<i>Not energy efficient - higher running costs</i>		
England & Wales	EU Directive 2002/91/EC	