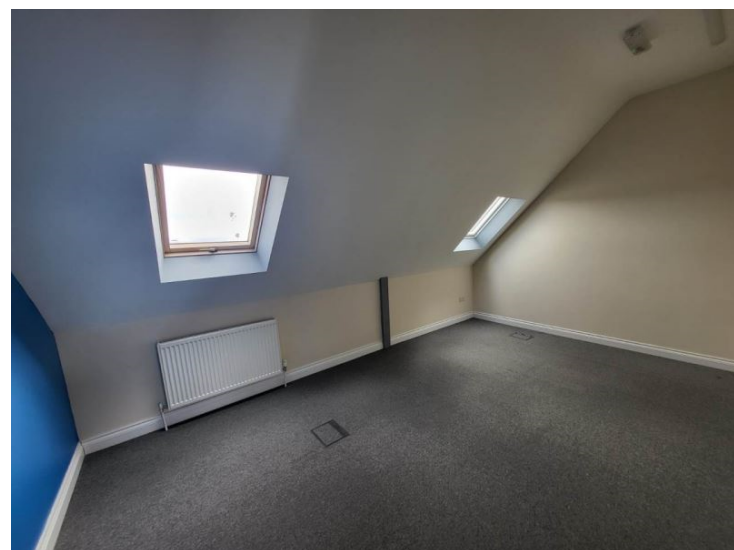




New Barn Farm
SG8 0EP

£850 Monthly

abode

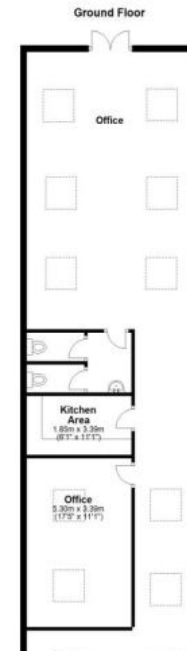


01763259888

New Barn Farm, Tadlow, SG8 0EP

£850 Monthly

Abode are delighted to offer this well appointed versatile office space in New Barn Farm, in the village of Tadlow. The property is totalling approximately 70 square meters of office and kitchen space. The rateable value for the whole property has previously been rated below £12,000, so would currently have full small business rate relief. The site landlord is offering the property inclusive of heating and reasonable electricity usage (high usage clients maybe separately metered). The landlord would be open to considering a variety of use cases. The property benefits from high speed internet access at a small monthly cost. Cost for the unit is £850 pcm £10,200 PA. Contact Abode to arrange viewing by prior appointment only.



Energy Efficiency Rating		
	Current	Potential
<i>Very energy efficient - lower running costs</i>		
(92-100) A		
(81-91) B		
(69-80) C		
(55-68) D		
(39-54) E		
(21-38) F		
(1-20) G		
<i>Not energy efficient - higher running costs</i>		
England & Wales	EU Directive 2002/91/EC	