



Russet Way  
SG8 6HE

£1,350 Monthly





01763259888

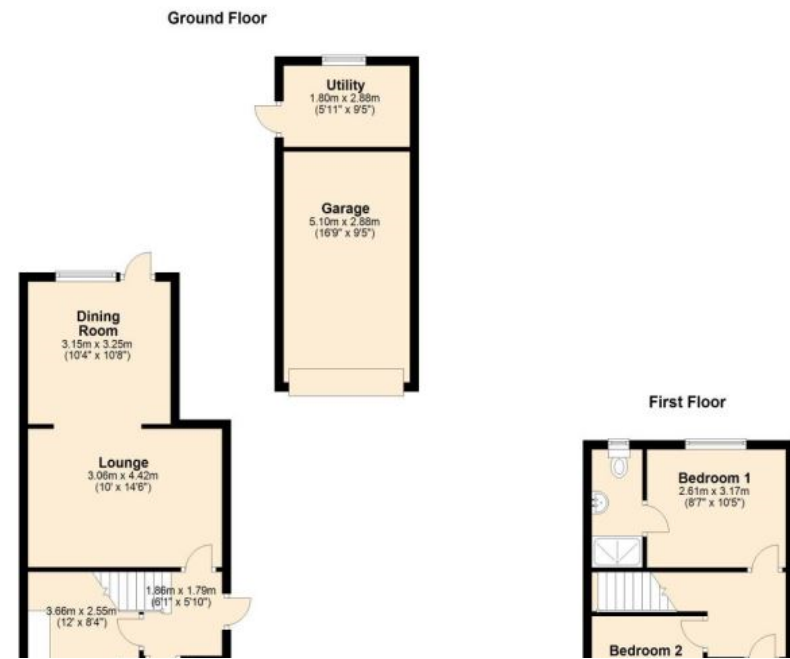
## Russet Way, Melbourn, SG8 6HE

£1,350 Monthly

Abode are delighted to offer this three bedroom property for rent in the popular village of Melbourn. The property is well decorated throughout and comprises of a kitchen with electric oven and hobs, lounge, dining room and downstairs bathroom. Upstairs there are two double bedrooms and one single bedroom as well as ensuite shower room to the Master Bedroom. The property further benefits from a private garden, garage with electric doors, and off-road parking for two vehicles. Viewing by prior appointment, afraid no pets.



Total area: approx. 91.1 sq. metres (980.9 sq. feet)



Energy Efficiency Rating		
	Current	Potential
<i>Very energy efficient - lower running costs</i>		
92- <b>A</b>		
(81-91) <b>B</b>		<b>89</b>
(69-80) <b>C</b>		
(55-68) <b>D</b>		
(39-54) <b>E</b>	<b>53</b>	
(21-38) <b>F</b>		
(1-20) <b>G</b>		
<i>Not energy efficient - higher running costs</i>		
<b>England &amp; Wales</b>	EU Directive 2002/91/EC	