

AP MORGAN



Riverpark Way, Northfield, Birmingham
Offers in excess of £280,000

Features:

- Two double & one single bedrooms
- Spacious lounge
- Generous kitchen/diner
- Ensuite for master bedroom
- Family bathroom
- Ground floor WC
- Off street parking
- Versatile rear garden

Description:

This three bedroom semi-detached house presents a spacious lounge, a generous kitchen/diner, family bathroom, ground floor WC, a versatile garden.

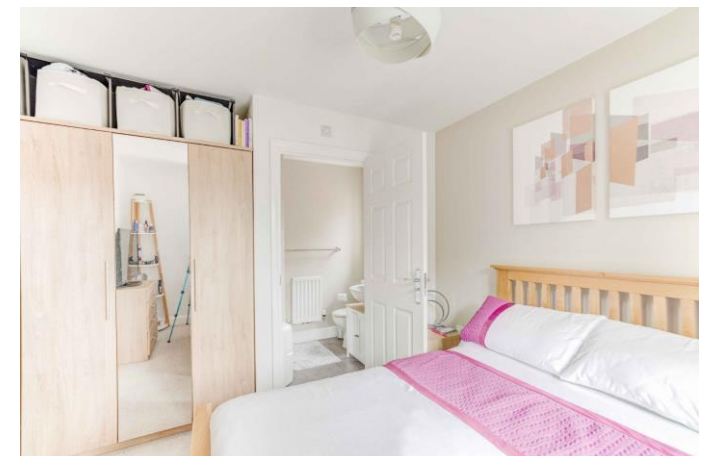
Approaching the property there is a gated front garden with a paved path to the front. There is space for parking multiple vehicles on the drive running along the side of the house.

Entering the property there is a hallway which gives access to the spacious lounge, giving space for multiple suites. The kitchen/diner gives ample counterspace presenting an integral induction hob, electric oven, dishwasher and sink with space/plumbing for freestanding appliances. The ground floor WC is also accessed from the entrance hall.

Ascending to the first floor, the landing presents Bedroom One, a large double which looks to the rear aspect giving access to the ensuite presenting a washbasin, WC and shower. Bedroom Two is also a large double looking to the front and Bedroom Three is the single of the property looking to the front. The bathroom presents a washbasin, WC and bath/shower.

The rear garden opens to a paved patio area giving plenty of space for outdoor furniture; continuing to a grass-laid lawn giving a versatile space allowing for the outdoors to be enjoyed.

Situated in Northfield, a short drive to local amenities, this property is close to schools and supermarkets, shops, restaurants, and bars. Local public transport links are also



nearby as well as the M42, allowing access to major road networks.

Details:

Hallway

Lounge 14'8" x 16'5" (4.47m x 5m) Both Max

Kitchen/Diner 10'8" x 16'3" (3.25m x 4.95m)

WC 5'4" x 2'9" (1.63m x 0.84m)

Landing

Bedroom One 9'6" x 9'8" (2.9m x 2.95m) Both Max

Ensuite 4'8" x 7'11" (1.42m x 2.41m) Both Max

Bedroom Two 8'5" x 9'8" (2.57m x 2.95m) Both Max

Bedroom Three 8'9" x 6'4" (2.67m x 1.93m)

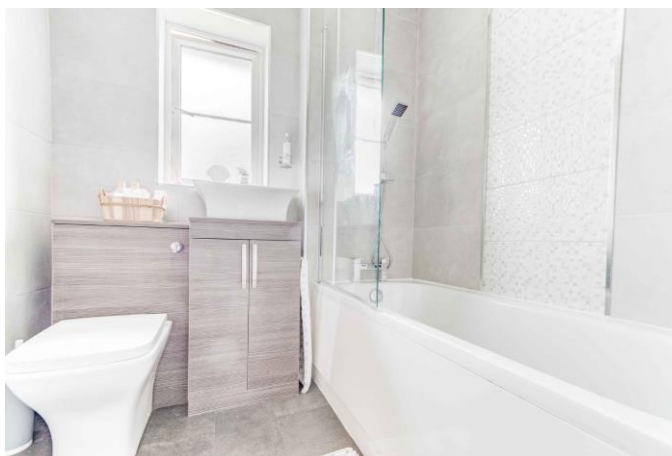
Bathroom 6'1" x 6'2" (1.85m x 1.88m)

EPC Rating: To be confirmed

Council Tax Band: C (tbc by solicitors).

Tenure: Freehold (tbc by solicitors).

For more information or to arrange a viewing, please call us on 0121 827 6827.



How can we help you?

Need a mortgage?

We recommend Wiser Mortgage Advice. They will search the market for you to ensure you get the right lender and mortgage deal. They typically achieve mortgage offers much more quickly than if you were dealing with lenders directly. The initial appointment is free and without obligation. Call us on 0121 827 6827, or visit their website for more information: www.wisermortgageadvice.co.uk

Property to sell?

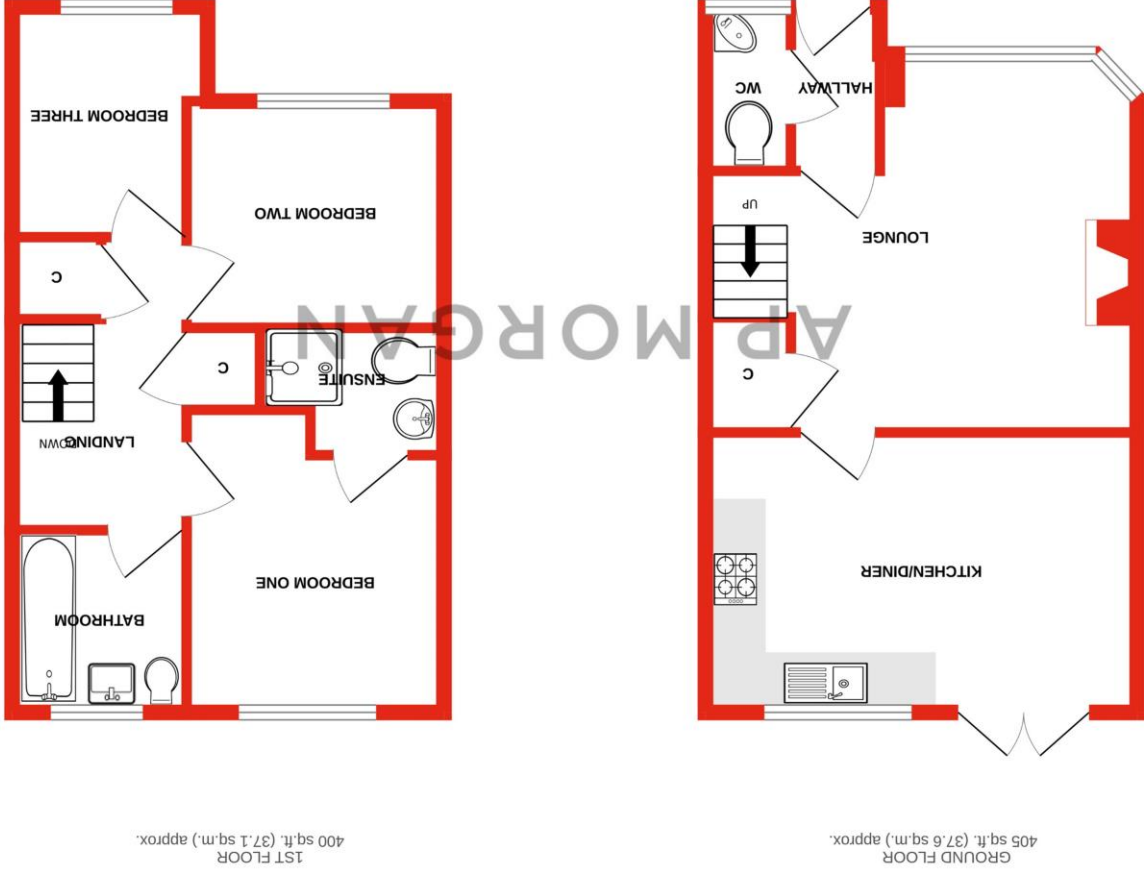
If you need to sell a property in order to buy, you ideally need to be on the market at least (and preferably Sold STC) before viewing, otherwise you may lose out to other buyers when the right property comes along. In these circumstances we can get your property 'live' quickly. Just book a free valuation and we will visit your property and discuss your needs.

Need a solicitor?

A good solicitor can save you literally weeks of time in the buying/selling process, reducing the stress levels of all involved. We will instruct a reputable firm that is competitive on cost and very reliable. Just ask for a quote.

Identity Checks

Estate Agents are required by law to conduct anti-money laundering checks on all those buying a property. We have partnered with a third party supplier to undertake these who will contact you once you have had an offer accepted on a property you wish to buy. The cost of these checks is £39 + VAT per buyer and this is a non-refundable fee. These charges cover the cost of obtaining relevant data, any manual checks and monitoring which might be required. This fee will need to be paid and the checks completed in advance of the issuing of a memorandum of sale on the property you would like to buy.



No statement in these details is to be relied upon as representation of fact, and purchasers should satisfy themselves by inspection or otherwise as to the accuracy of the statements contained within. These details do not constitute any part of any offer or contract. AP Morgan and their employees and agents do not have any warranty or representation whatsoever in respect of this property. These details and all statements herein are provided without any responsibility on the part of AP Morgan or the vendors. Equipment: AP Morgan has not tested the equipment or central heating system mentioned in these particulars and the purchasers are advised to satisfy themselves as to the working order and condition. Measurements: Great care is taken when measuring, but measurements should not be relied upon for ordering carpets, equipment, etc. The Laws of Copyright protect this material. AP Morgan is the Owner of the copyright. This property sheet forms part of our database and is protected by the database right and copyright laws. No unauthorised copying or distribution without permission.