



Flat 11 Sekhon House 144-146 Kingsmead Road, High Wycombe, HP11 1UZ

Asking Price | £1,650

## Property Description

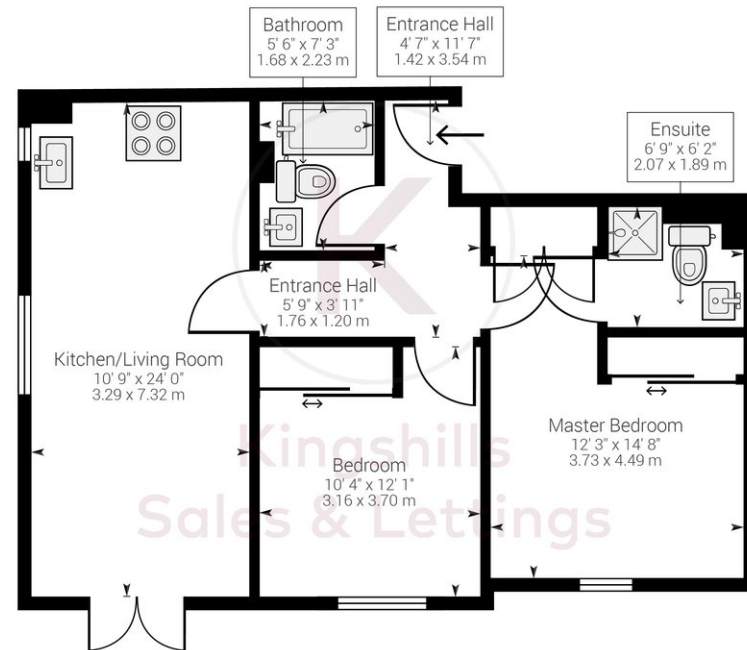
We are delighted to offer to the market this modern two-bedroom, two-bathroom apartment located to the east side of High Wycombe. The apartment has been finished to a high standard and the apartments offers spacious and modern living. Further benefits from light and airy accommodation, a balcony, Bosch appliances, undercover parking with lift access to each floor.

The apartment is situated in a sought-after location to the east-side of High Wycombe which offers easy access to Junction 3 of the M40 motorway, High Wycombe town centre and Beaconsfield. The development is also just a short walk from Kingsmead Park.

Available from 12th April 2024.

COUNCIL TAX C

EPC RATING B



Approximate net internal area: 717.69 ft<sup>2</sup> / 66.68 m<sup>2</sup>

While every attempt has been made to ensure accuracy, all measurements are approximate, not to scale. This floor plan is for illustrative purpose only and should be used as such by any prospective tenant or purchaser.

Powered by Giraffe360

Kingshills Estate Agents  
Comet Studios  
Amersham  
Buckinghamshire  
HP7 0PX

01494 939868  
hello@kingshills.co.uk  
kingshills.co.uk

Agents Note: Whilst every care has been taken to prepare these particulars, they are for guidance purposes only. All measurements are for general guidance purposes only and whilst every care has been taken to ensure accuracy, they should not be relied upon and potential buyers/tenants are advised to recheck the measurements