

Property Features

- Character cottage
- Open plan living room/diner
- Two good sized bedrooms
- Modern bathroom
- Stylish kitchen
- Allocated parking
- Private and enclosed garden
- Close to Schools, Amenities & M40
- Convenient for the commuter
- EPC 67 D / Council Tax Band C

Full Description

Nestled on the east side of High Wycombe in Loudwater this end-terraced cottage presents an exquisite blend of modern comforts and traditional charm. The property, beautifully decorated throughout, offers a warm and inviting atmosphere, making it an ideal home for those seeking a harmonious mix of contemporary living and classic aesthetics.

Boasting a light and airy lounge/dining room, this characterful home is beautifully decorated and creates a stylish and welcoming environment leading. This thoughtfully designed downstairs area leads to the modern kitchen, making it an ideal place to unwind or entertain guests.

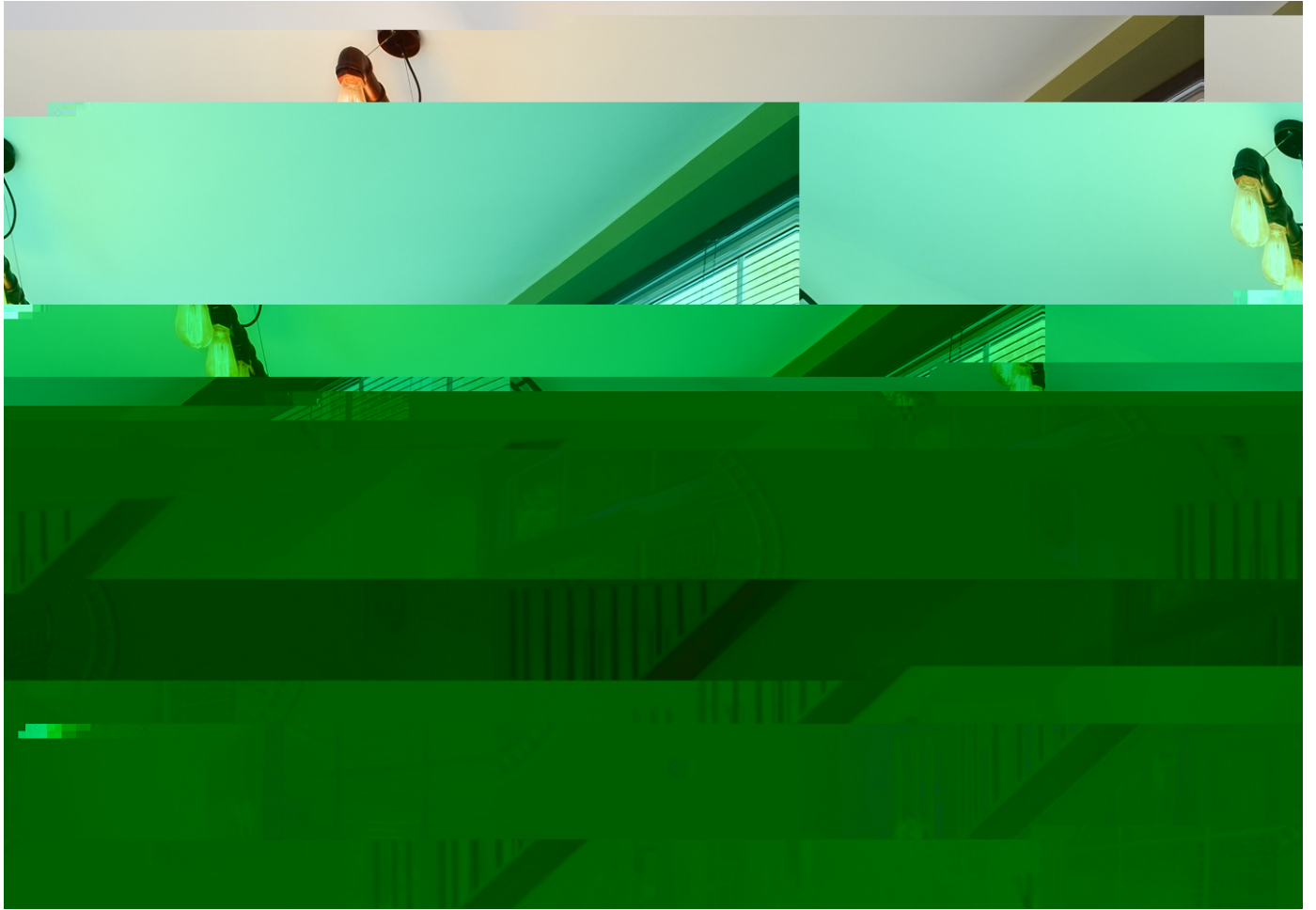
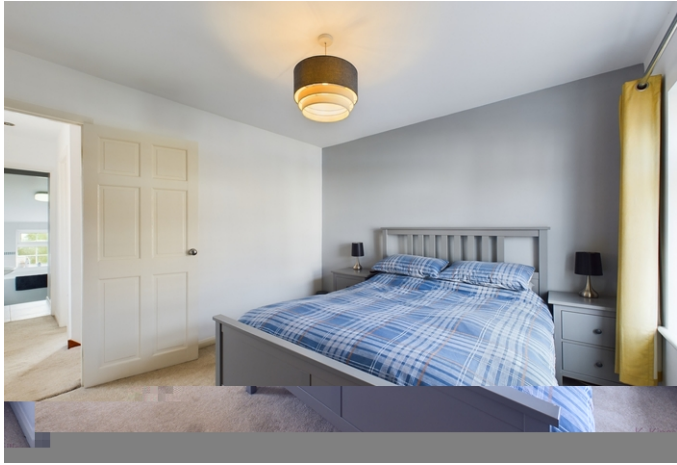
Upstairs, the cottage boasts two well-appointed bedrooms, providing comfortable and private spaces for relaxation. A tastefully designed bathroom enhances the property's appeal, featuring modern fixtures and a soothing ambiance.

The rear garden is private and enclosed and offers a patio area leading with artificial turf making this a perfect garden to relax or entertain. This is one of very few properties in the vicinity to have allocated parking which can be found to the rear.

The property is located within a short distance of Kingsmead Park as well as several local amenities, Wycombe Heights Golf Club and popular local schools. High Wycombe and Beaconsfield are in close proximity, offering additional shopping, dining, and entertainment options. The property benefits from its proximity to Junction 3 of the M40, ensuring easy access to major road networks. High Wycombe's railway station offers convenient rail links to London and other nearby cities.

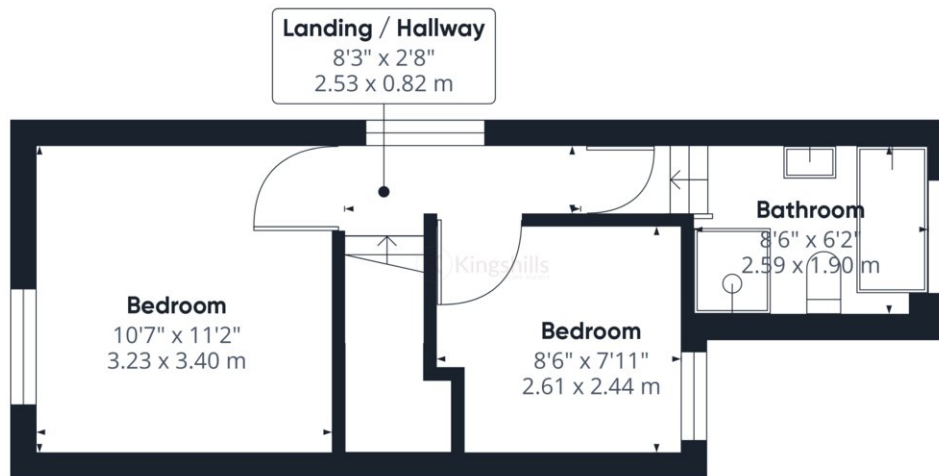
This end-terraced cottage in Loudwater provides an opportunity to embrace a harmonious lifestyle with the conveniences of modern amenities and excellent transport connections. Early viewing is highly recommended to fully appreciate the charm and appeal of this wonderful property.







Ground Floor



Floor 1

Approximate total area⁽¹⁾
591.28 ft²
54.93 m²

Reduced headroom
8.77 ft²
0.81 m²

(1) Excluding balconies and terraces

☐ Reduced headroom
(below 1.5m/4.92ft)

While every attempt has been made to ensure accuracy, all measurements are approximate, not to scale. This floor plan is for illustrative purposes only.

GIRAFFE360