



Flat 2 Stuart Lodge, Stuart Road, High Wycombe, Buckinghamshire, HP13 6AG

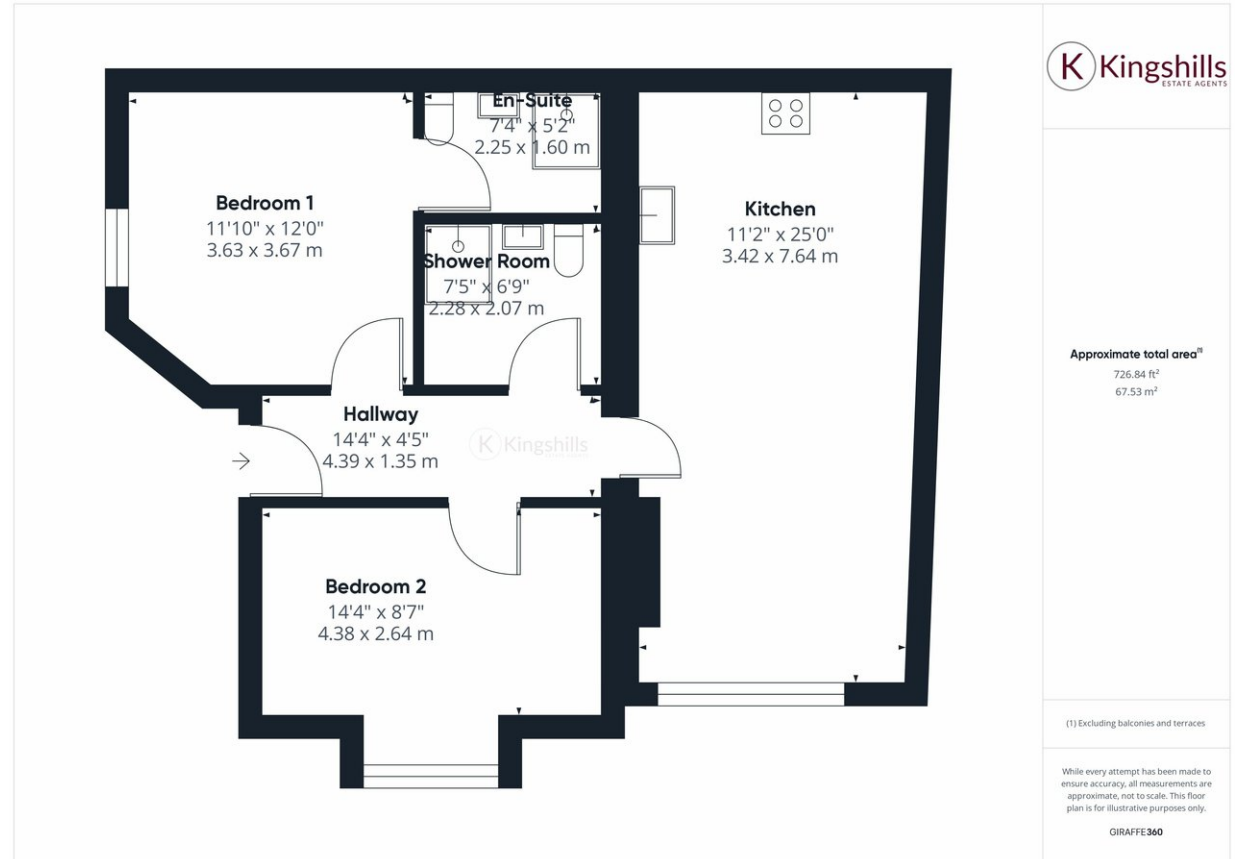
Asking Price | £1,650

Property Description

We are delighted to bring to the market a brand new two-bedroom, two-bathroom apartment which is within walking distance of High Wycombe town centre. Stuart Lodge offers the pinnacle of modern living within the heart of High Wycombe. Boasting a prime location just a leisurely stroll away from the vibrant town centre, this residence presents a unique opportunity to embrace a lifestyle of convenience and luxury. Also within a stone's throw is the popular Rye Park, which offers up 53 acres of open space, an outdoor pool, gym and café.

The apartment offers light and airy accommodation, with high ceilings and newly fitted sash windows. The apartment also features a stylish kitchen and two bathrooms. The kitchen is fully equipped with a washing machine and dishwasher. Externally there is parking for 1 car.

High Wycombe Town centre offers a abundance of shopping, dining, and entertainment options just a short walk away, creating an ideal setting for a vibrant urban lifestyle. The train connects High Wycombe to London Marylebone in just 24 minutes.



Kingshills Estate Agents
Comet Studios
Amersham
Buckinghamshire
HP7 0PX

01494 939868
hello@kingshills.co.uk
kingshills.co.uk

Agents Note: Whilst every care has been taken to prepare these particulars, they are for guidance purposes only. All measurements are for general guidance purposes only and whilst every care has been taken to ensure accuracy, they should not be relied upon and potential buyers/tenants are advised to recheck the measurements