



Windrush Court, Windrush Drive, High Wycombe, Buckinghamshire, HP13 7UL

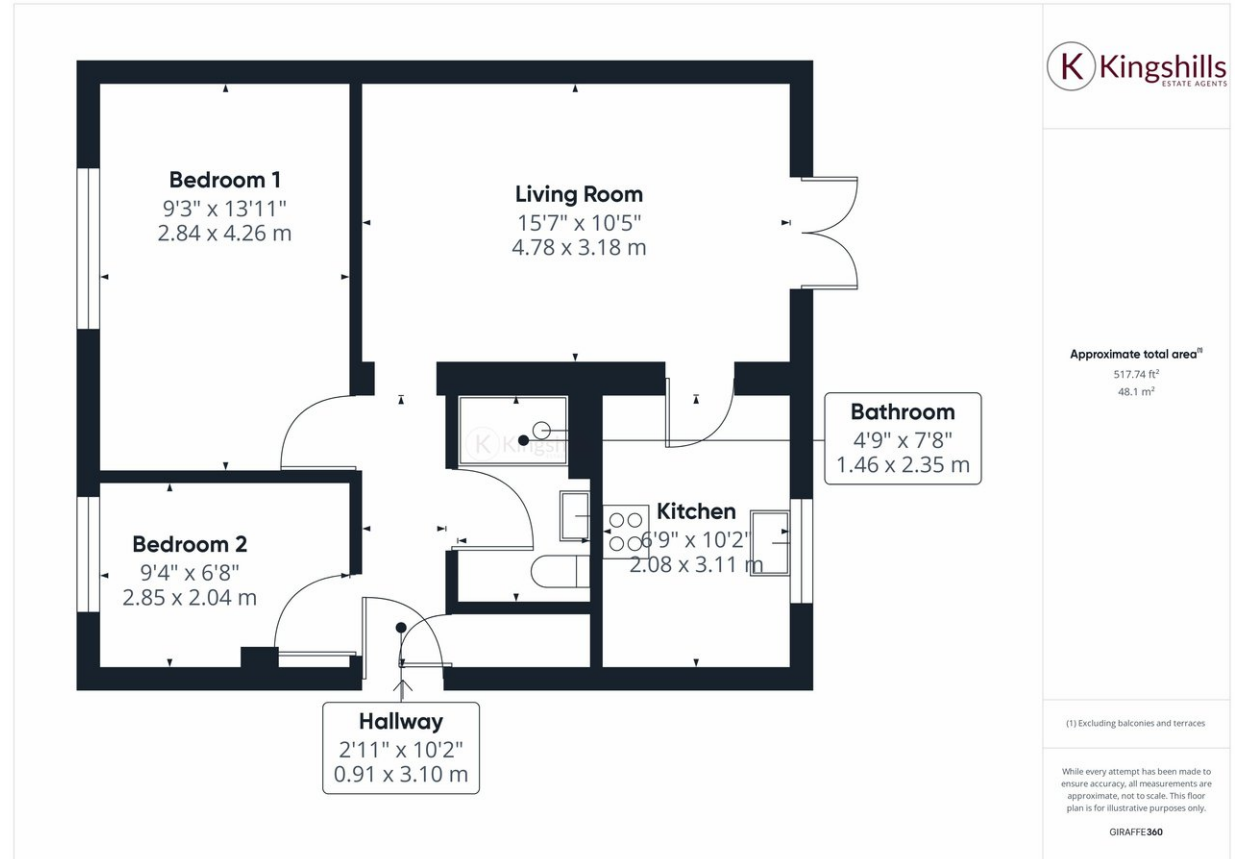
Asking Price | £1,250

Property Description

A two-bedroom ground floor property located in a quiet road on the north-east outskirts of the town centre which benefits from direct access to a communal garden offering great views across High Wycombe. The property has recently had a new high-specification shower room fitted, has new flooring throughout and recently redecorated. Internally the accommodation comprises; entrance; a large double bedroom; further single bedroom; newly fitted shower room; spacious living area with patio doors out to the communal garden and a kitchen with a range of appliances. Available with 15th June on an unfurnished basis.

COUNCIL TAX C

EPC RATING D



Kingshills Estate Agents
Comet Studios
Amersham
Buckinghamshire
HP7 0PX

01494 939868
hello@kingshills.co.uk
kingshills.co.uk

Agents Note: Whilst every care has been taken to prepare these particulars, they are for guidance purposes only. All measurements are for general guidance purposes only and whilst every care has been taken to ensure accuracy, they should not be relied upon and potential buyers/tenants are advised to recheck the measurements