



Property Features

- Extended Semi Detached Family Home
- Catchment for Cedar Park School
- Walking distance of local Shops
- 4 Bedrooms (Principal with Ensuite)
- Living Room with Fireplace
- Extended and Refitted Kitchen with utility room
- Extended Dining Room
- Private Drive and Integral Garage
- Enclosed 60ft rear Gardens
- EPC 52 E / Council Tax Band E

Full Description

Welcome to Marys Mead, Hazlemere – an extended and improved semi detached home situated on the sought-after 'Park Development.' This lovely family property offers four bedrooms, with the principal bedroom featuring a modern ensuite shower room. Boasting a perfect blend of modern comforts and open entertaining rooms, this home is designed to cater to the needs of a contemporary family.

As you enter through the Entrance Hall, you're greeted by a warm and inviting living room, complete with a fireplace that adds a touch of elegance and coziness to the space. The heart of the home lies in the extended kitchen and dining room, providing a spacious and well-appointed area for family gatherings and entertaining guests.

Convenience is key in this residence, with a thoughtfully added utility room and a downstairs cloakroom. Direct access to the integral garage ensures ease of living, providing ample storage space and secure parking.

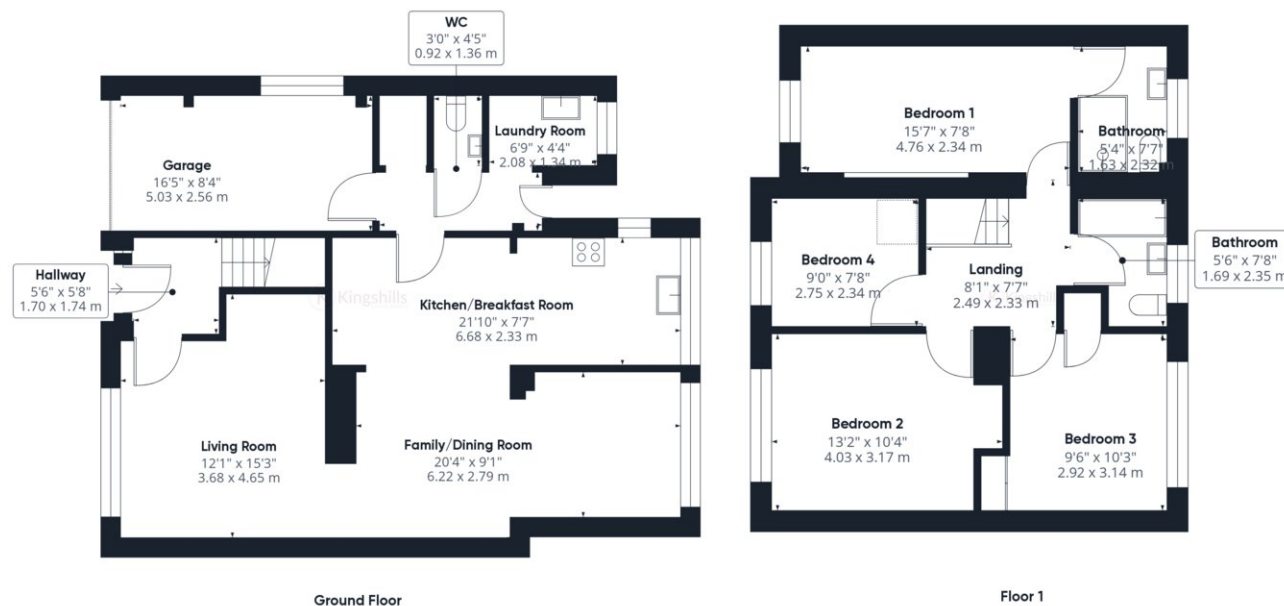
The outdoor space is a true highlight, with gardens to the rear stretching approximately 60 to 70 feet in length. This expansive and well-maintained garden creates a serene retreat, perfect for relaxation and outdoor activities. Beyond the property lies a lightly wooded copse, offering a picturesque backdrop and an ideal setting for leisurely walks.

Families will appreciate the proximity to reputable schools, making this home an excellent choice for those with educational considerations. The local shops, conveniently located, cater to daily needs and add to the overall convenience of the neighborhood.

Transportation links are readily accessible, providing easy connectivity to major routes for commuting or exploring the nearby areas. Whether you seek the tranquility of your private retreat or the vibrancy of the local community, Marys Mead offers the perfect balance of both. Don't miss the opportunity to make this exceptional property your new home.







Approximate total area[®]

1406.56 ft²
130.67 m²

Excluding balconies and terraces

While every attempt has been made to ensure accuracy, all measurements are approximate, not to scale. This floor plan is for illustrative purposes only.

GIRAFFE360