



11 Sierra Road, High Wycombe, Buckinghamshire, HP11 1GX

Asking Price | £1,300

Property Features

- Modern One Bedroom Apartment
- Located in the Highly Regarded Wye Dene Development
- Convenient Location for Amenities and Transport Links
- Allocated Parking For 1 Car
- Modern Throughout
- Within Walking Distance to High Wycombe Town Centre
- First Floor
- Unfurnished
- Available from Early June

Full Description

Situated in the heart of the Chilterns is the highly regarded Wye Dene development, a wonderful community built along the river Wye where you will find beautiful homes combined with an exceptional location. We are delighted to offer to the market this one-bedroom apartment, available to rent from early June.

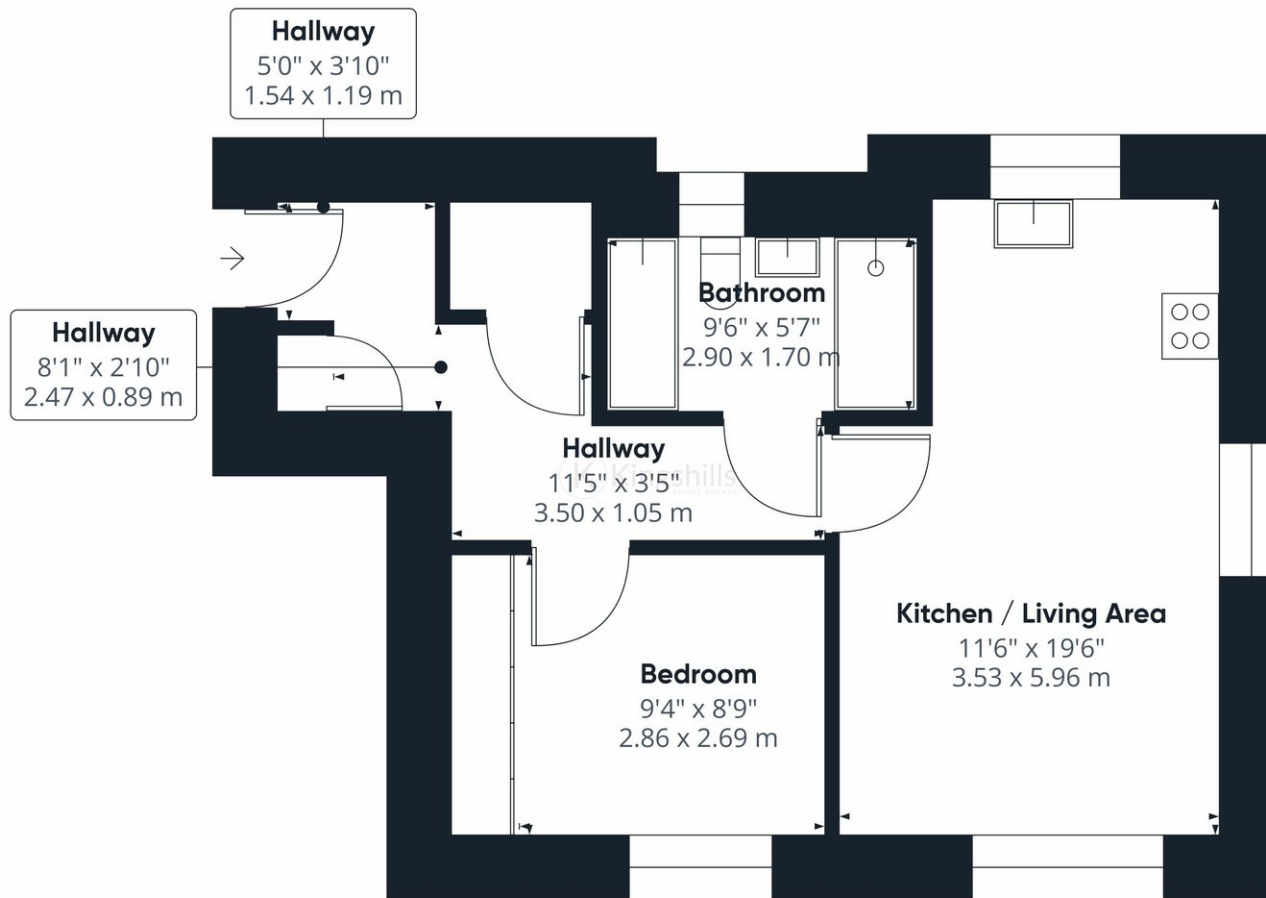
Built by Berkeley Homes, this home is completed to an extremely high specification and offers modern, light, and airy accommodation. The accommodation comprises; spacious entrance with storage cupboard; double bedroom with fitted wardrobes; bathroom with separate shower cubicle and open plan kitchen/living area, complete with breakfast bar and integrated appliances.

Wye Dene is within a mile of the town centre, where you will find a wide range of facilities, Eden shopping centre, restaurants and the rail station can get you into London Marylebone in under 30 minutes. Wye Dene is just a short drive from the M40 for easy access to London, whilst benefiting from being surrounded by beautiful countryside. A riverside path leads to the Rye Park and the Ryemead retail park.

This home is the perfect place to relax, unwind and get away from the stresses of modern city living, whilst remaining connected.







Approximate total area⁽¹⁾
465.13 ft²
43.21 m²

(1) Excluding balconies and terraces

While every attempt has been made to ensure accuracy, all measurements are approximate, not to scale. This floor plan is for illustrative purposes only.

GIRAFFE360