



Property Features

- An Extended Four Bedroom Detached Home
- Quiet No Through Road
- Spacious Living room
- Four Bedrooms
- Modern Kitchen
- Bathroom & Shower Room
- Complete Upper Chain
- Enclosed Garden
- Driveway Parking and Garage
- EPC 49 E / Council Tax Band E

Full Description

Nestled in the picturesque village of Longwick, just a short distance from Princes Risborough is this splendid detached house offering an idyllic countryside lifestyle within easy reach of urban amenities.

As you enter the house via the hallway you immediately find the heart of the home which is the delightful kitchen/breakfast room, thoughtfully designed to cater to modern living. The spacious area features contemporary fittings, ample storage, and high-quality appliances, making it a perfect space for family meals and entertaining. Also on the ground floor is the generously sized living room which is flooded with natural light, creating a warm and inviting atmosphere. The layout allows for versatile furniture arrangements.

With four well-appointed bedrooms, this property is ideal for families or those who appreciate extra space. Each bedroom offers a peaceful retreat, featuring large windows that showcase the surrounding countryside. The house boasts a modern bathroom and shower room offering functionality for the modern family.

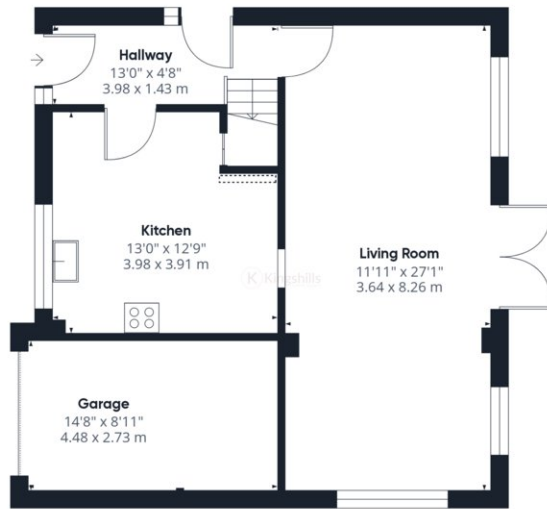
Surrounded by the beauty of the Buckinghamshire countryside, the property includes a well-maintained garden where residents can enjoy outdoor activities, gardening, or simply relax.

Beyond the charm of the property itself, Princes Risborough offers a range of activities and attractions for residents to enjoy. Explore the stunning Chiltern Hills, designated an Area of Outstanding Natural Beauty, with its network of walking and cycling trails such as the phoenix trail. Immerse yourself in the breathtaking scenery and discover the local wildlife.

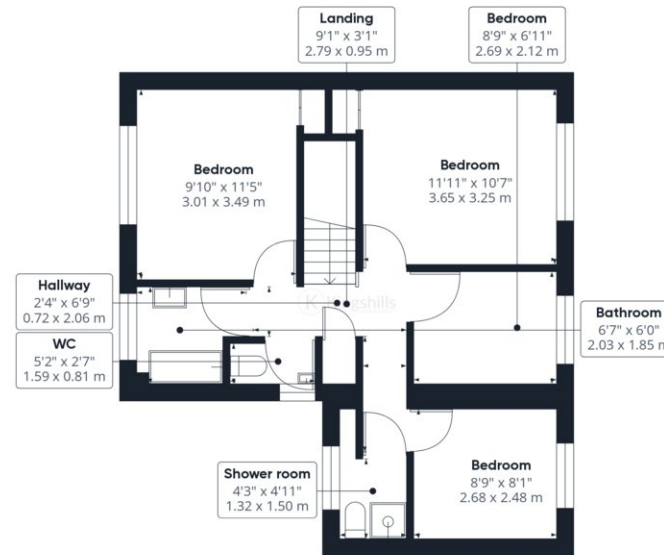
The property is conveniently located for Longwick C of E Combined Primary School and Longwick Pre School and is within a short walk of a general store/post office, recreational ground, public house and open countryside. The thriving market town of Princes Risborough is within a short drive which offers a comprehensive range of shopping and leisure facilities and secondary school along with mainline train station to London Marylebone with excellent grammar schools being found in the near by towns of High Wycombe and Aylesbury.







Ground Floor



Floor 1

Approximate total areaⁿ
1223.5 ft²
113.67 m²

Reduced headroom
1.54 ft²
0.14 m²

Excluding balconies and terraces

Reduced headroom
(below 1.5m/4.92ft)

While every attempt has been made to ensure accuracy, all measurements are approximate, not to scale. This floor plan is for illustrative purposes only.

GIRAFFE360