

Property Features

Top Floor Apartment	Modern Fitted Kitchen
Stunning Sun Terrace	Modern Bathroom
Shared Ownership Would be Considered	Allocated Parking
Double Bedroom with Wardrobes	Close to Town Centre
Large Living/Dining Room	EPC 79 C / Council Tax Band B

Full Description

Welcome to Barbel Court, a captivating top-floor apartment nestled in the heart of High Wycombe. This charming residence boasts an enviable sun terrace offering views across High Wycombe, creating an idyllic retreat for relaxation and entertainment.

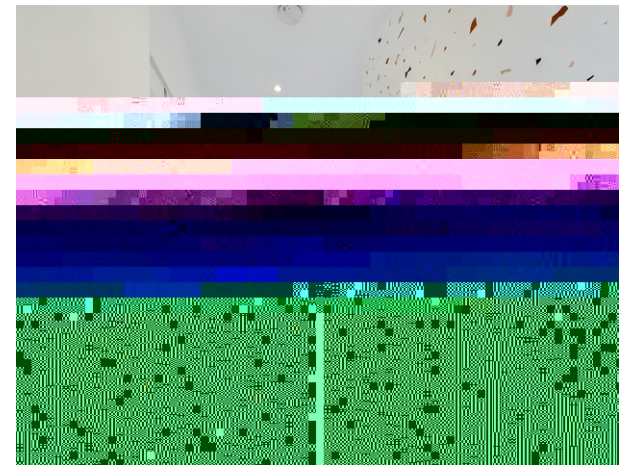
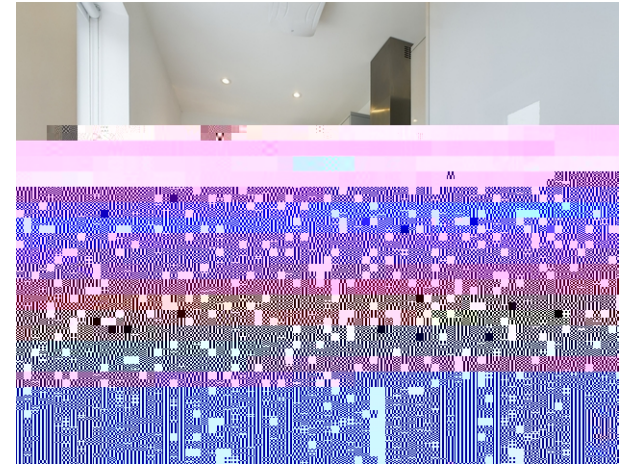
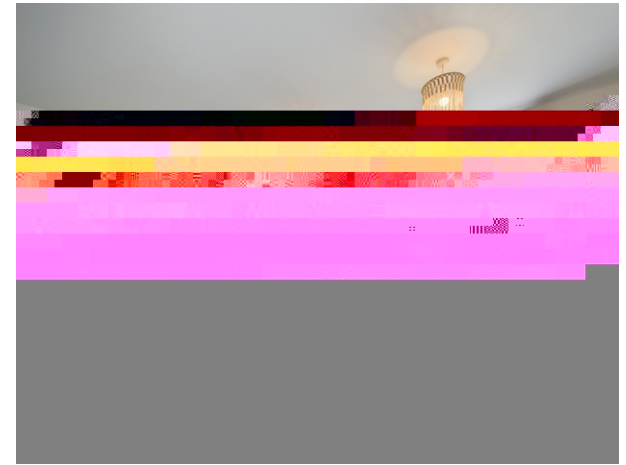
The asking price is at 100%, however as this is a shared ownership property other increments as low as 40% can be considered.

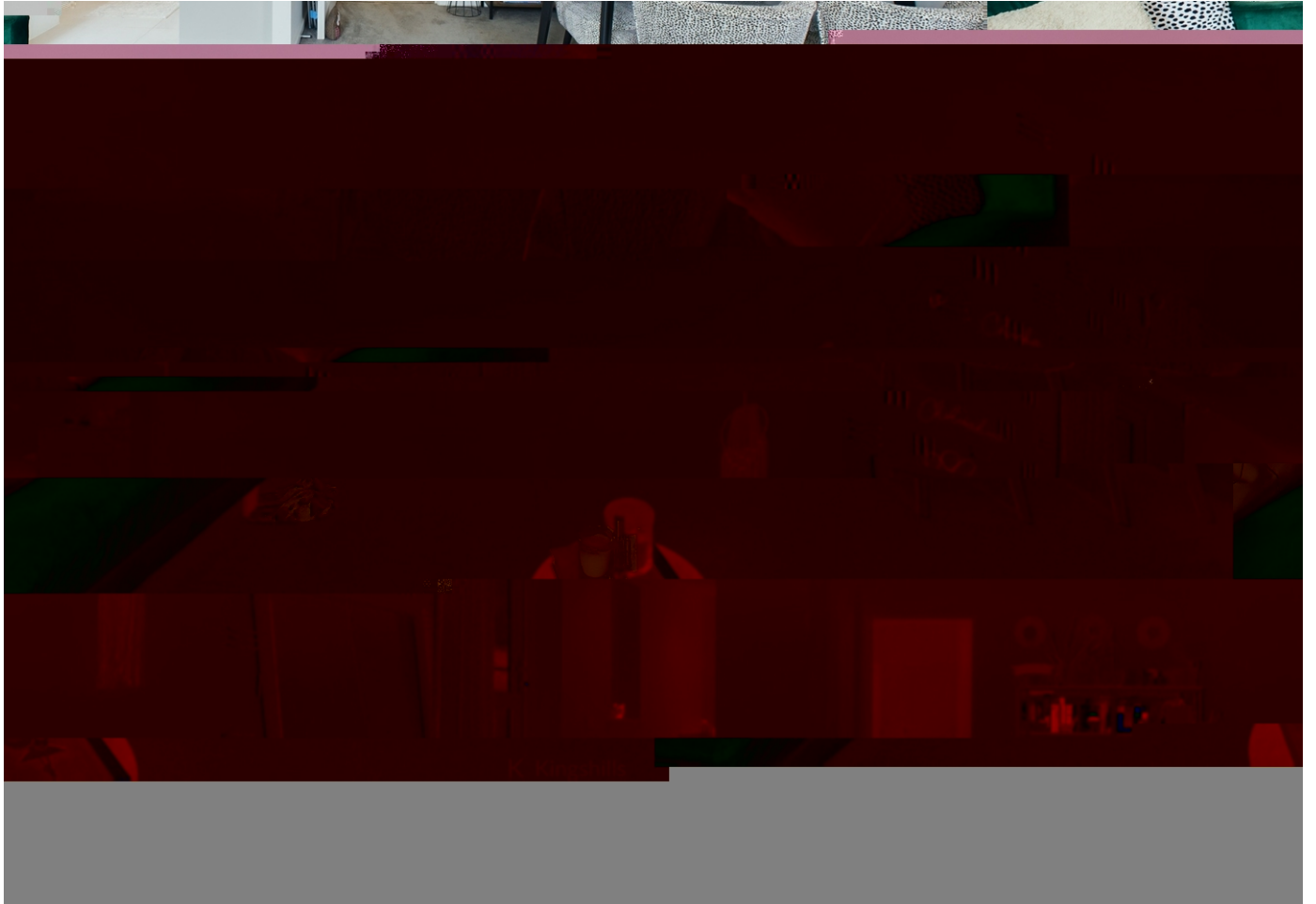
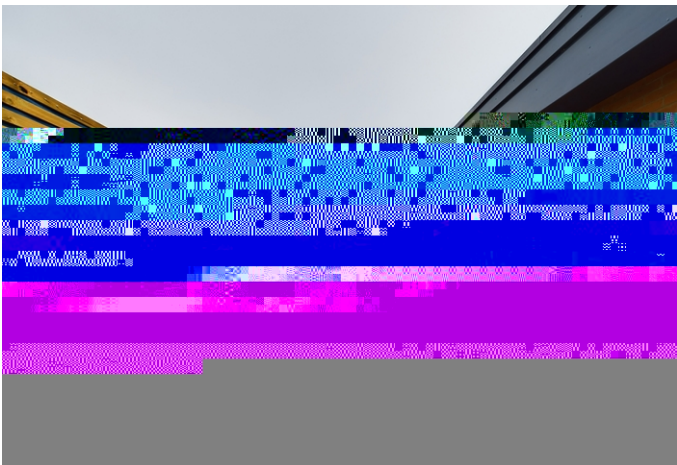
As you step inside, you are greeted by an inviting entrance hall, setting the tone for the elegance and comfort that awaits within. The spacious open-plan Living/Dining Room is a focal point of the home, offering a seamless flow of space and natural light. With open access to the well-equipped Kitchen.

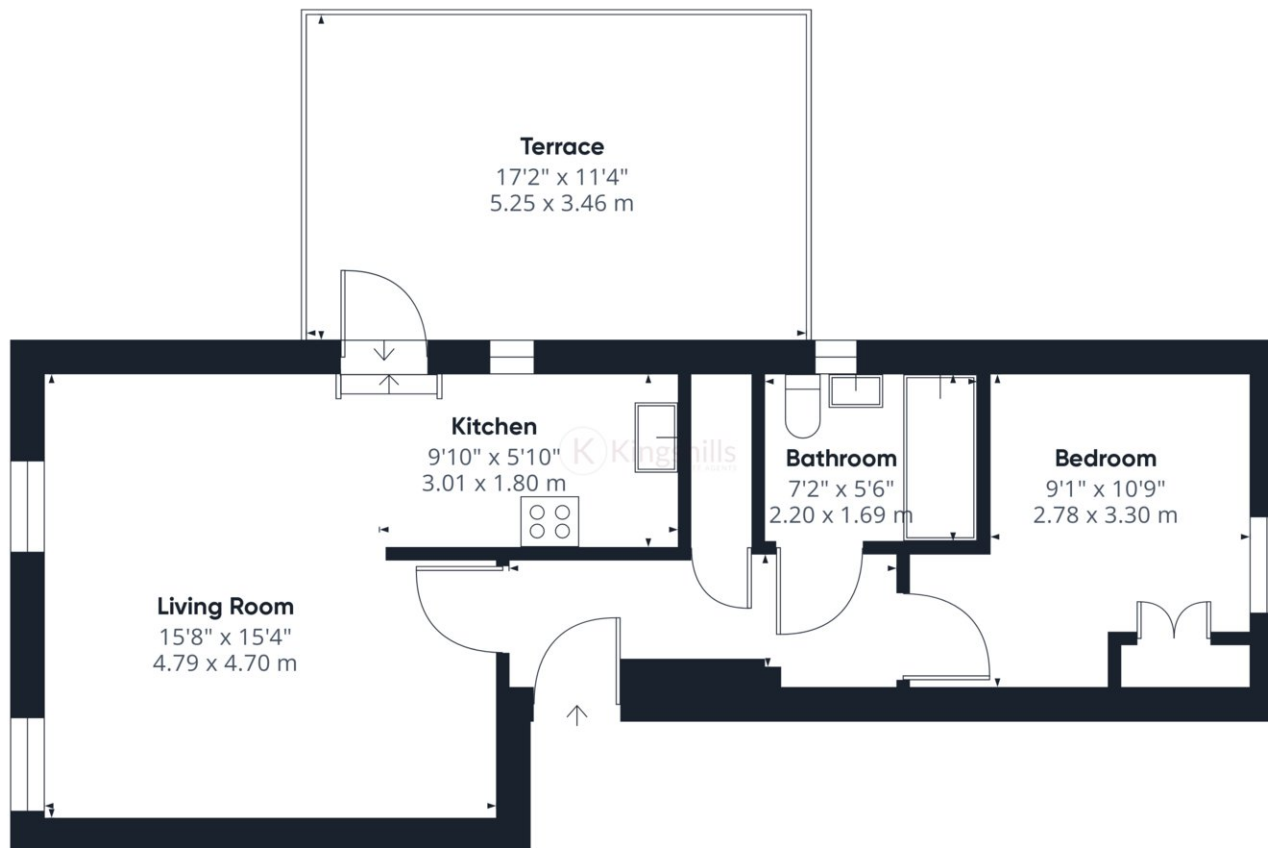
The accommodation further comprises a generously sized double bedroom adorned with fitted wardrobes. Completing the ensemble is a sleek and contemporary bathroom, offering a sanctuary for relaxation and rejuvenation.

Situated in close proximity to the vibrant town of High Wycombe, residents of Barbel Court are presented with an array of amenities and attractions at their doorstep. From shopping districts and cultural venues to scenic parks and recreational facilities, there is no shortage of activities to indulge in. Explore the bustling markets, dine at charming eateries, or embark on leisurely strolls through the lush greenery of nearby parks.

With its ideal location and exceptional features, 10 Barbel Court offers a lifestyle of comfort and convenience, making it the perfect place to call home in High Wycombe. Experience urban living at its finest and seize the opportunity to make this remarkable residence your own.







Approximate total area⁽¹⁾

504.15 ft²
46.84 m²

(1) Excluding balconies and terraces

While every attempt has been made to ensure accuracy, all measurements are approximate, not to scale. This floor plan is for illustrative purposes only.

GIRAFFE360