



Property Features

- 'Dorton' End of Terraced Home
- NO ONWARD CHAIN
- 3 Good Sized Bedrooms
- Large Living Room
- Kitchen and Conservatory
- Bathroom and Downstairs Cloakroom
- Driveway and Garage
- Catchment of popular Schools
- Gas Rad Heating & Double Glazing
- EPC 64 D / Council Tax Band D

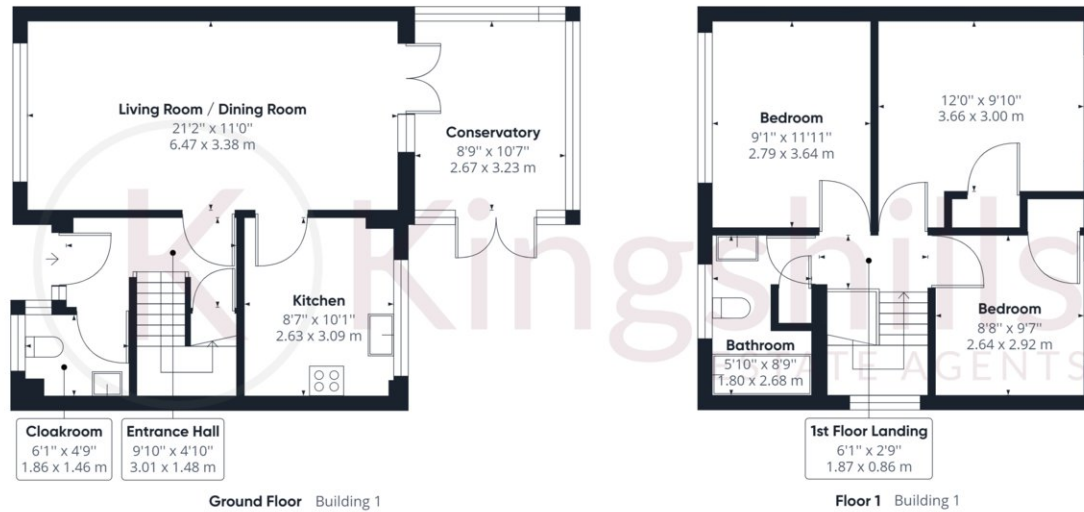
Full Description

An improved and newly decorated end of terrace home of the highly popular 'Dorton' Design and located on the popular 'Manor Farm' development and within catchment of highly regarded schools that cater for all ages.

The accommodation comprises; spacious hallway that serves the downstairs cloakroom, large living/dining room with doors to the modern kitchen and conservatory. Upstairs offers 3 good sized bedrooms and a modern family bathroom. The external of the property offers driveway parking, garage which has been split to make space for a utility area and rear garden. Available NOW with no upper chain.







Approximate total area⁽¹⁾

953.11 ft²

88.55 m²

(1) Excluding balconies and terraces

While every attempt has been made to ensure accuracy, all measurements are approximate, not to scale. This floor plan is for illustrative purposes only.

GIRAFFE360