



Coates Lane, High Wycombe, Buckinghamshire, HP13 5EY

Asking Price | £1,900

Property Features

- Three Bedroom Detached House
- Newly Improved
- New Carpets Throughout
- Views over Hughenden Park
- Large Garage with Storage Room Above
- Driveway Parking
- Storage Room Above Garage
- Council Tax Band F
- Within Walking Distance to High Wycombe Town Centre
- Available Now

Full Description

A newly improved three-bedroom detached home, located within a sought-after location on Coates Lane, which enjoys views over Hughenden Park and is within walking distance of High Wycombe town centre. The property has had a new kitchen fitted, been redecorated throughout, and had new carpets fitted.

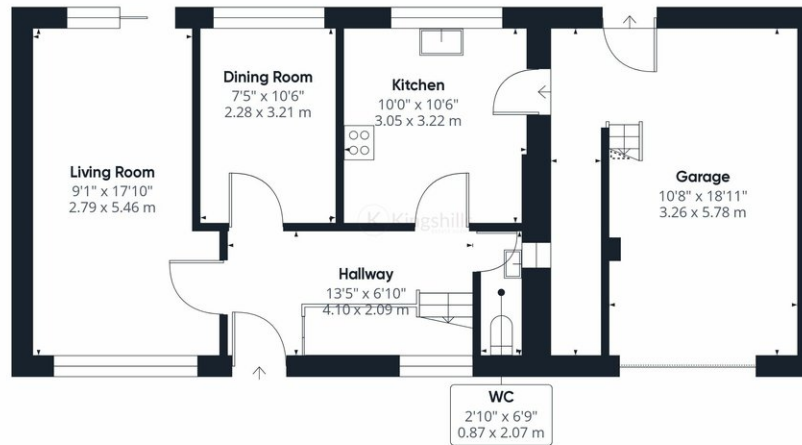
The accommodation offers a living room with doors out the garden; dining room; new kitchen with a door to the large garage with storage room. Upstairs offers two large double bedrooms, a further 3rd bedroom and a family bathroom. The house offers large front and rear gardens and driveway parking for numerous cars.

Available to rent immediately on an unfurnished basis.

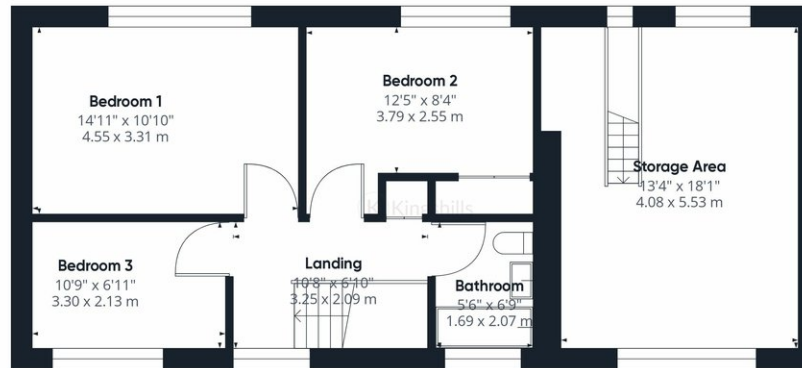
In contrast to all the tradition and tranquillity of the villages surrounding it, High Wycombe town centre has its eyes fixed firmly on the future. Currently in the midst of a massive updating project including expansion of the bustling Eden shopping centre, a brand-new leisure centre along with a huge range of busy restaurants and bars, the town is fast becoming the place to live. Placed at Junction 4 of the M40 and having a train station in the centre offering a 24-minute commute to London Marylebone, High Wycombe is an ideal location to commute from. With a range of fantastic primary as well as renowned grammar and private schools, education is one of the main reasons people move to High Wycombe and stay there.







Ground Floor



Floor 1

Approximate total area⁽¹⁾
1429.62 ft²
132.82 m²

Reduced headroom
3.02 ft²
0.28 m²

(1) Excluding balconies and terraces

 Reduced headroom
(below 1.5m/4.92ft)

While every attempt has been made to ensure accuracy, all measurements are approximate, not to scale. This floor plan is for illustrative purposes only.

GIRAFFE360