



154 Carver Hill Road, High Wycombe, Buckinghamshire, HP11 2UH

Asking Price | £260,000

Property Features

- First floor maisonette
- Located within a stones throw of Tom Burts Hill
- Close to Town centre
- Living/Dining area
- Re-fitted stylish kitchen
- Private garden
- Modern Family Bathroom
- Garage
- Two bedrooms
- Close to country walks

Full Description

Welcome to this charming maisonette located in Poets Corner, High Wycombe, Buckinghamshire. Nestled in a desirable area close to Tom Burts Hill and the town centre, this delightful property offers a perfect blend of comfort and convenience.

As you step inside, you're greeted by a beautifully presented interior that exudes warmth and character. The maisonette boasts two generously sized bedrooms, providing ample space for relaxation and rest. The layout is designed to optimize functionality while maintaining a cosy atmosphere throughout.

The property features a well-appointed bathroom, providing modern amenities and a tranquil space for your daily routines. Whether you're enjoying a quick shower or indulging in a long soak, this bathroom offers the perfect retreat after a busy day.

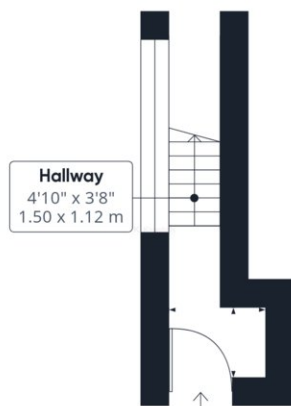
One of the highlights of this maisonette is its private garden, providing an outdoor area where you can unwind and entertain guests.

Additionally, this property includes a garage, offering convenient storage space for your vehicles, bicycles, or outdoor equipment.

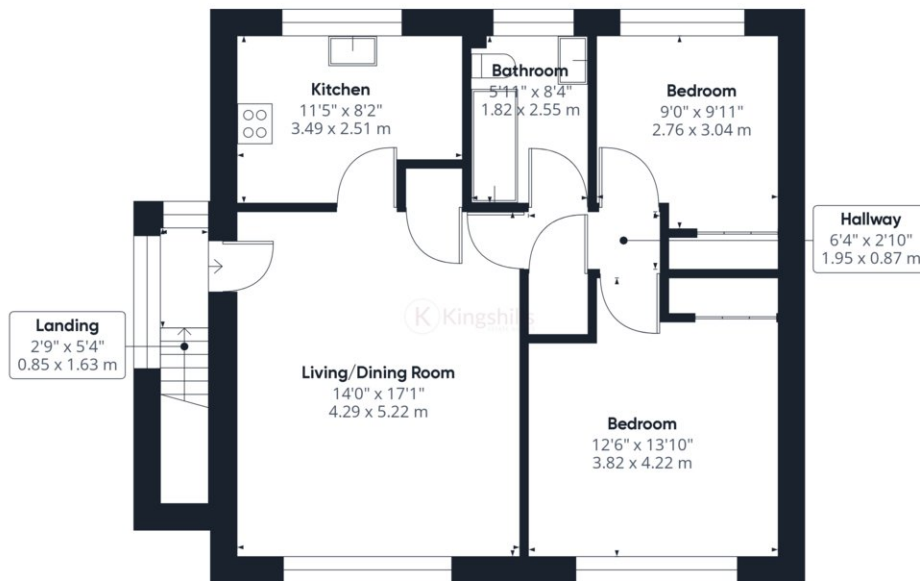
The property is a stones throw away from Tom Burt's Hill which has been recognised as a Local Wildlife Site due to the variety of wildlife that can be found on the site in spite of its urban location. It's a great place to go and get away from the hustle and bustle of town life without having to jump in your car.







Ground Floor Building 1



Floor 1 Building 1



Ground Floor Building 2

Approximate total area⁽¹⁾
909.87 ft²
84.53 m²

(1) Excluding balconies and terraces

While every attempt has been made to ensure accuracy, all measurements are approximate, not to scale. This floor plan is for illustrative purposes only.

GIRAFFE360