



Beacon Hill, Penn, High Wycombe, Buckinghamshire, HP10 8NH

Asking Price | £2,750

Property Features

- Character Property
- Modern Interior
- Conservatory
- Kitchen/Breakfast Room
- Gated Entrance
- Two En-Suites
- Desirable Location
- Driveway and Garage
- Available 26th April
- Unfurnished

Full Description

Beautifully presented three to four bedroom brick and flint character home set in a delightful location close to local walks and the village pubs. The property offers good sized accommodation and benefits from having a garage and off street parking.

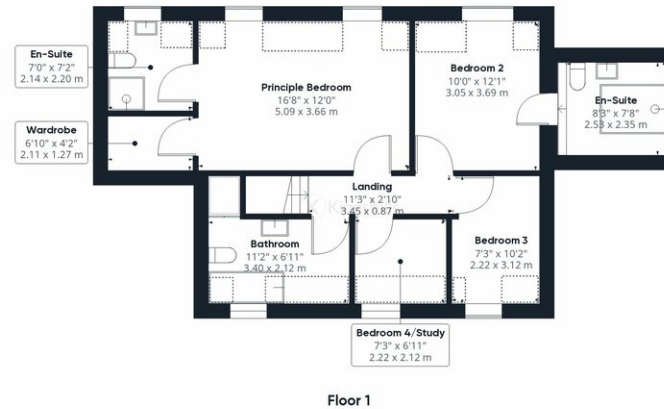
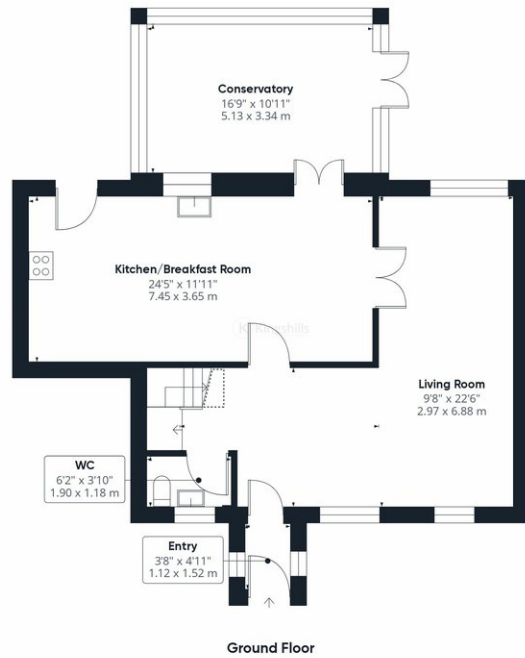
The entrance vestibule leads to the L-shaped living room and there's a downstairs cloakroom. To the back of the house is a fully fitted kitchen/breakfast room with built in appliances and onto a conservatory that overlooks the garden.

To the first floor there are two double bedrooms both with en-suites and the principle bedroom has a walk-in dressing area. There are two further bedrooms with the fourth bedroom also being used as a study.

The property has a private garden to the rear and a lawn area to the front. There's driveway parking and a single garage.







Approximate total area⁽¹⁾
1661.17 ft²
154.33 m²

Reduced headroom
94.43 ft²
8.77 m²

(1) Excluding balconies and terraces

☒ Reduced headroom
(below 1.5m/4.92ft)

While every attempt has been made to ensure accuracy, all measurements are approximate, not to scale. This floor plan is for illustrative purposes only.

GIRAFFE360