



Property Features

- Attractive Mews Style Link Detached Property
- 3 Bedrooms
- Principal Bedroom with En Suite
- Tastefully Decorated
- Tranquil Countryside Location
- Modern Open Plan Kitchen/Diner
- Sun Room
- Downstairs WC with Space for Laundry Facilities
- Garage with Additional Car Port
- Awaiting EPC / Council Tax Band E

Full Description

Welcome to this charming countryside mews style link-detached house nestled in the picturesque village of Askett, near Princes Risborough in Buckinghamshire. Tastefully decorated throughout, this inviting property offers a perfect blend of modern convenience and rustic charm.

Upon entering the property, you are greeted by a welcoming hallway with a convenient utility room complete with downstairs WC and space for laundry facilities.

Step into the spacious open-plan layout that effortlessly combines the kitchen, dining area, and sunroom, creating a bright and welcoming space for family gatherings and entertaining. The kitchen boasts sleek countertops with ample storage space and modern appliances, making meal preparation a joy.

The generous lounge area is bathed in natural light, thanks to the French doors that lead out to the inviting patio area. Perfect for indoor-outdoor living, the patio is ideal for alfresco dining or simply relaxing and enjoying the tranquillity of this peaceful location.

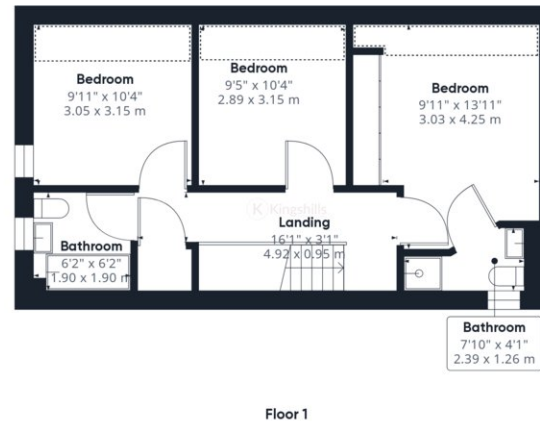
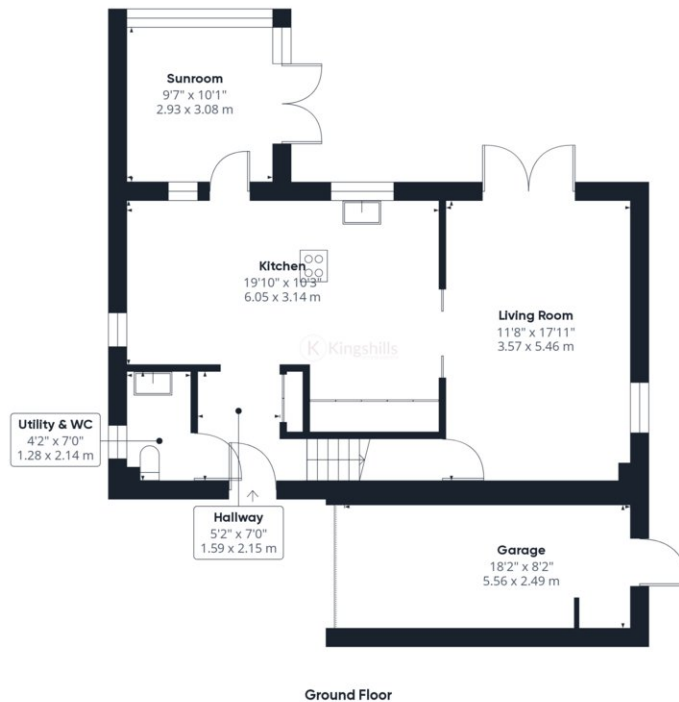
Upstairs, you'll find three well-appointed bedrooms. The master bedroom is presented with expertly crafted country style fitted wardrobes and cupboards and a modern en suite shower room. The additional two bedrooms offer comfortable accommodation for the whole family with beautiful panoramic views of the Chiltern views beyond. The family bathroom provides a practical space to unwind and rejuvenate.

Stepping outside, the thoughtfully designed private garden beckons you to explore its beauty. An attractive decking area, adorned with a charming pergola, sets the scene for delightful summer afternoons spent entertaining friends and family. Additionally, a barked area provides a safe and inviting space for children to play and explore.

To the front of the property, a garage and covered carport offer convenient parking and storage options, ensuring that practicality meets style at every turn.







Approximate total area⁽¹⁾
1298.48 ft²
120.63 m²

Reduced headroom
66.52 ft²
6.18 m²

(1) Excluding balconies and terraces

Reduced headroom
(below 1.5m/4.92ft)

While every attempt has been made to ensure accuracy, all measurements are approximate, not to scale. This floor plan is for illustrative purposes only.

GIRAFFE360