



68 Woodcock Avenue, Walters Ash, High Wycombe, Buckinghamshire, HP14 4TN

Asking Price | £390,000



## Property Features

---

- End terrace house
- Spacious living room
- Two Bedrooms
- Re-fitted kitchen and bathroom
- Good sized rear garden
- Home office
- Driveway parking
- Village location
- Close to shops
- EPC C / Council Tax Band C

## Full Description

---

A spacious two bedroom end-terraced house located in the picturesque village of Walters Ash. This well-presented property offers comfortable living spaces, modern amenities, and a tranquil setting.

Nestled in Walters Ash, this property enjoys a peaceful village setting with easy access to High Wycombe town centre and surrounding areas. The village provides a range of local amenities, including shops, schools, and recreational facilities.

Approaching the property, you'll find driveway parking to the front, providing convenient off-road parking for multiple vehicles.

Once inside the house you will discover a tastefully decorated living space. The ground floor features a good size lounge area, perfect for relaxing evenings. The highlight of the ground floor is the refitted kitchen, which boasts modern appliances, sleek countertops, and ample storage space.

Ascending the stairs, you'll find two inviting bedrooms, offering large and comfortable accommodation for a small family or professionals. Both bedrooms are complemented by the recently refitted bathroom, featuring contemporary fixtures and a fresh, modern design.

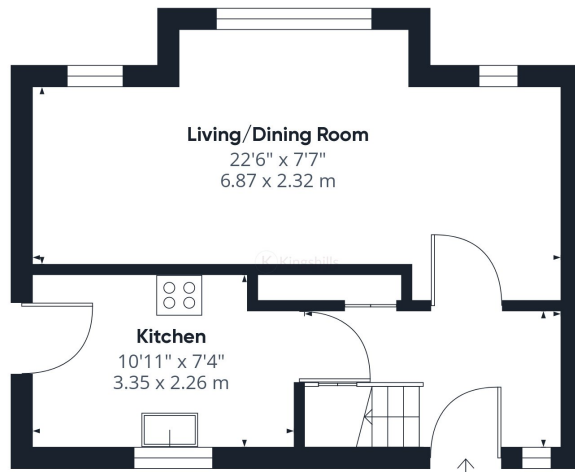
The property boasts a good-sized rear garden, ideal for outdoor entertaining or simply enjoying the sunshine. The garden is well-maintained and offers a peaceful retreat with space for gardening or relaxation. Additionally, there is an outside home office, providing a dedicated workspace away from the main house, perfect for remote working or creative pursuits.



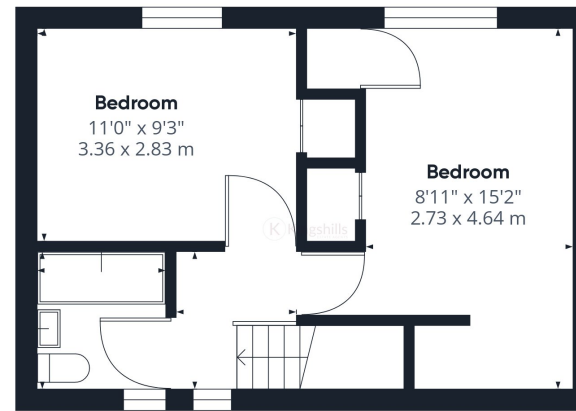




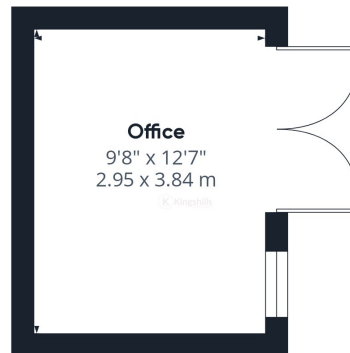




Ground Floor Building 1



Floor 1 Building 1



Ground Floor Building 2

Approximate total area<sup>(1)</sup>  
802.38 ft<sup>2</sup>  
74.54 m<sup>2</sup>

(1) Excluding balconies and terraces

While every attempt has been made to ensure accuracy, all measurements are approximate, not to scale. This floor plan is for illustrative purposes only.

GIRAFFE360