



28 Buckingham Drive, High Wycombe, Buckinghamshire HP13 7XT

Asking Price | £485,000

Property Features

- Extended Semi Detached Family Home
- Large corner plot
- Walking distance of local Shops
- Four Bedrooms
- Spacious Living/ Dining Room
- Family Room and shower room
- Extended Dining Room
- Private Drive and Integral Garage
- Enclosed 60ft rear Gardens
- Awaiting EPC / Council Tax Band D

Full Description

This semi-detached house offers a rare opportunity to own a spacious property with incredible potential for expansion or development. Boasting 4 bedrooms and 2 bathrooms, this residence is perfect for growing families or those seeking ample space for living and entertaining.

This family home offers a spacious living area that provides the perfect setting for relaxation or hosting gatherings. The well-appointed kitchen features modern appliances and abundant storage space, making meal preparation a breeze. Adjacent to the kitchen is the versatile dining area, ideal for enjoying family meals or entertaining guests.

The property boasts a further room on the ground floor which is ideal as a family/playroom along with a shower room.

The property offers four generously sized bedrooms, each providing comfort and privacy for residents. Whether used as sleeping quarters, home offices, or hobby rooms, these bedrooms offer endless possibilities to customize the space to suit your needs. Additionally, the two bathrooms ensure convenience for busy households.

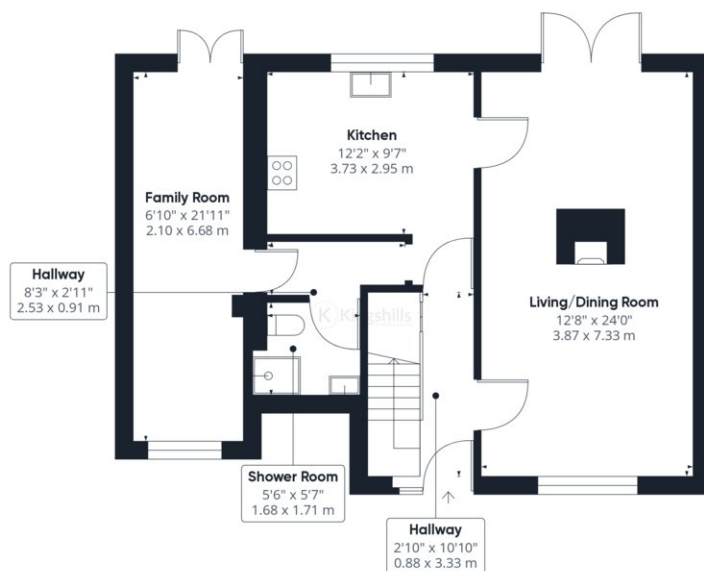
Situated on a large corner plot, this property presents a unique opportunity for expansion or redevelopment. With ample space available, you can let your imagination run wild and create the home of your dreams. Whether you envision adding additional living space, creating a stunning garden oasis, or even building a separate structure, the possibilities are endless.

Outside, you'll find gated parking with room for numerous cars, providing convenience and security for residents and guests alike. The expansive driveway offers plenty of space for parking, as well as potential for further development or landscaping.

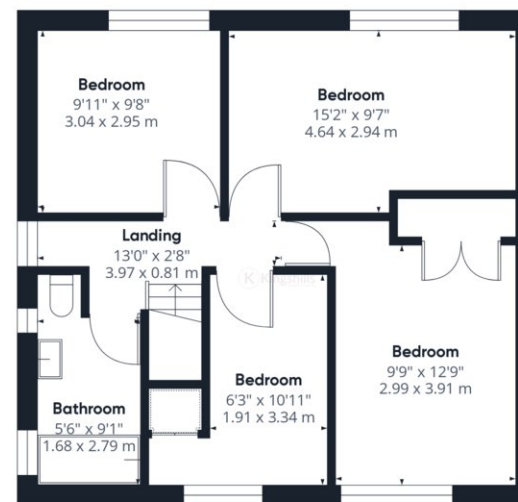
Don't miss out on the chance to make this exceptional property your own and unlock its full potential. With its prime location, spacious interior, and abundant outdoor space, this semi-detached house offers the perfect combination of comfort, convenience, and opportunity.







Ground Floor



Floor 1

Approximate total area⁽¹⁾

1283.97 ft²
119.28 m²

(1) Excluding balconies and terraces

While every attempt has been made to ensure accuracy, all measurements are approximate, not to scale. This floor plan is for illustrative purposes only.

GIRAFFE360