



Friars Gardens, Hughenden Valley, High Wycombe, Bucks, HP14 4LT

Asking Price | £550,000

Property Features

- Detached Chalet Bungalow
- 2/3 Bedrooms
- 2 Bathrooms (1 Ground Floor, 1 First Floor)
- L-Shaped Living/Dining Room
- Off Road Parking and Garage
- Large Gardens
- Stunning Views across Chiltern Hills
- Requires some Modernisation
- No onward chain
- EPC Rating E / Council Tax Band F

Full Description

A 2/3 bedroom chalet style bungalow that requires some updating. Located in an envious position at the beginning of this side road in Hughenden Valley, the property has some stunning views across the Chiltern Hills.

Accommodation

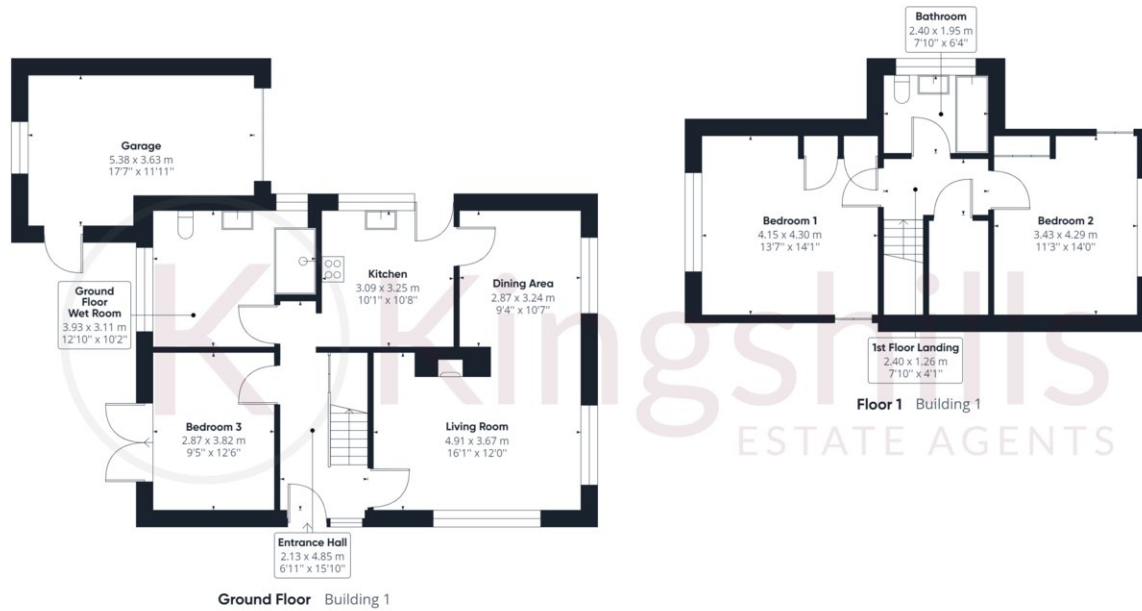
Entrance hall, L-shaped living/dining room, kitchen, bedroom 3/study, large shower room that was originally another bedroom and a cloakroom. To the first floor there are 2 large bedrooms and a family bathroom.

Outside

The rear garden backs on to woodland with views over the Chiltern Hills, to the front there is a driveway that leads to the single garage.







Approximate total area⁽¹⁾

1436.75 ft²

133.48 m²

(1) Excluding balconies and terraces

While every attempt has been made to ensure accuracy, all measurements are approximate, not to scale. This floor plan is for illustrative purposes only.

GIRAFFE360